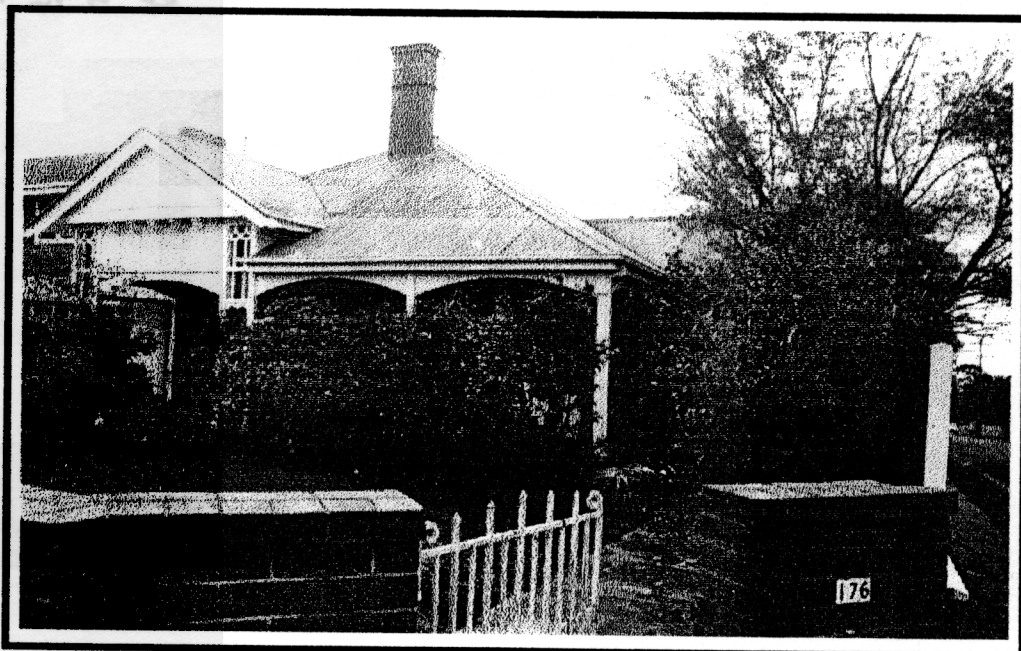


811-  
**NEWTOWN URBAN CONSERVATION STUDY. - 'C' CITATIONS. Ref: 118**  
Richard Peterson Architect & Conservation Consultant. Daniel Catrice Historian 1996.

<b>NAME:</b> —	
<b>ADDRESS:</b> 176 Noble Street. (north-west cnr Claremont Avenue)	
<b>USE:</b> House	
<b>CONSTRUCTION DATE:</b> 1911 <b>SOURCE:</b> Visual & 1	
<b>DESIGNER:</b> —	<b>BUILDER:</b> —
<b>CRITERIA:</b> H1; Ar1.	<b>HISTORIC THEME:</b> 2.3
<b>DESCRIPTION:</b> <b>STYLE:</b> Edwardian <b>STORIES:</b> 1 <b>DETACHED.</b>	
<b>MATERIALS:</b> <b>WALLS</b> Brick <b>ROOF</b> Iron <b>STRUCTURE</b> Lb	
<b>CONDITION:</b> Very good. <b>INTACTNESS:</b> Excellent. <b>THREATS:</b> —	
<b>SIGNIFICANT INTACT ELEMENTS:</b> FORM. FACADE. VERANDAH. ROOF FORM. GABLE DECORATION. VERANDAH DECORATION. CHIMNEYS. DOORS. WINDOWS. PAINTWORK SCHEME. TREES.	
<b>SIGNIFICANCE:</b> <b>TYPE:</b> HISTORICAL. ARCHITECTURAL. <b>LEVEL:</b> LOCAL.	
<b>DESIGNATION EXISTING:</b> PLANNING SCHEME.	
<b>RECOMMENDED CONTROL:</b> PLANNING SCHEME.	
<b>GRID REF:</b>	<b>SURVEY:</b> RP <b>DATE:</b> 19.5.96. <b>NEGS:</b> 5.30.





**HISTORY:** This house was built in 1911 for a Miss Morgan. Subsequent owners include Charles Read and, from the mid-1920s, Arthur David.<sup>1</sup>

**VISUAL DESCRIPTION:** A triple-fronted, red brick, hip-roofed Edwardian house. The left and right rear side bays project as gables. The verandah extends beneath the gable, across the front and returns under the hip. It has catenary curved transoms and some incised post decoration. Around the angle is a splayed window with a shingle-clad spandrel. The chimney has brick frieze moulds. Upper gables jetty on decorative brackets, with pressed metal roughcast pattern cladding, timbered below fretwork in unusual plant forms. The subtle wrought iron spearhead palisade gate is set in a more recent fence.

**SIGNIFICANCE:** A characteristic and particularly intact Edwardian brick house built in 1911. It has local architectural significance as a characteristic Edwardian domestic design, and particularly for its unusual Art Nouveau influenced organic fretwork in the gable and subtle wrought iron gate. It is historically significant as a representative embodiment of the comfortable way of life in Edwardian Newtown and its values.

**INTACTNESS:** Excellent. The low brick front fence is recent.

**CONDITION:** Very good.

---

<sup>1</sup> *City of Newtown and Chilwell Ratebooks*