

NEWTOWN URBAN CONSERVATION STUDY. - 'C' CITATIONS. **Ref: 115**
Richard Peterson Architect & Conservation Consultant. Daniel Catrice Historian 1996.

NAME: Mossgeil, The Geelong College Junior Girls Boarding House.

ADDRESS: 133 Noble Street.

USE: School

PREVIOUS USE: House

CONSTRUCTION DATE: 1923

SOURCE: Visual & 1

DESIGNER: —

BUILDER: —

CRITERIA: H1; Ar1.

HISTORIC THEME: 2.1

DESCRIPTION: **STYLE:** Bungalow **STORIES:** 2 **DETACHED.**

MATERIALS: **WALLS** Brick **ROOF** Tile **STRUCTURE** Lb

CONDITION: Good. **INTACTNESS:** Reasonable. **THREATS:** —

SIGNIFICANT INTACT ELEMENTS:

FORM. VERANDAH. ROOF FORM. ROOF DECORATION. CHIMNEYS. WINDOWS. TREES.

SIGNIFICANCE:

TYPE: HISTORICAL. ARCHITECTURAL.

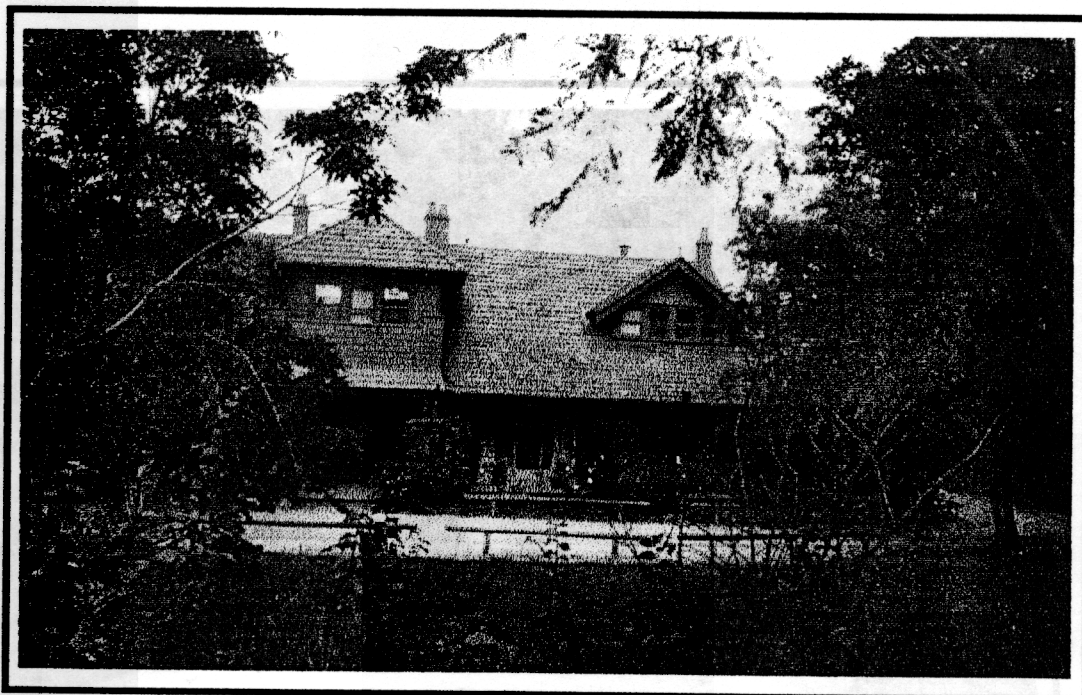
LEVEL: LOCAL.

DESIGNATION EXISTING: PLANNING SCHEME.

RECOMMENDED CONTROL: PLANNING SCHEME.

GRID REF: **SURVEY:** RP **DATE:** 19.5.96. **NEGS:** 5.25 & 26.

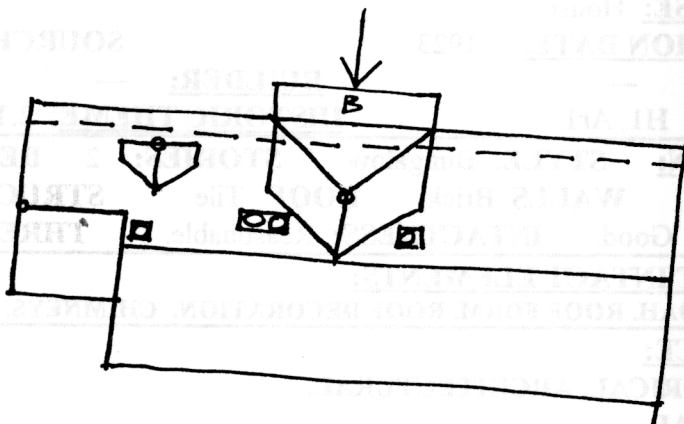
(Obscured).



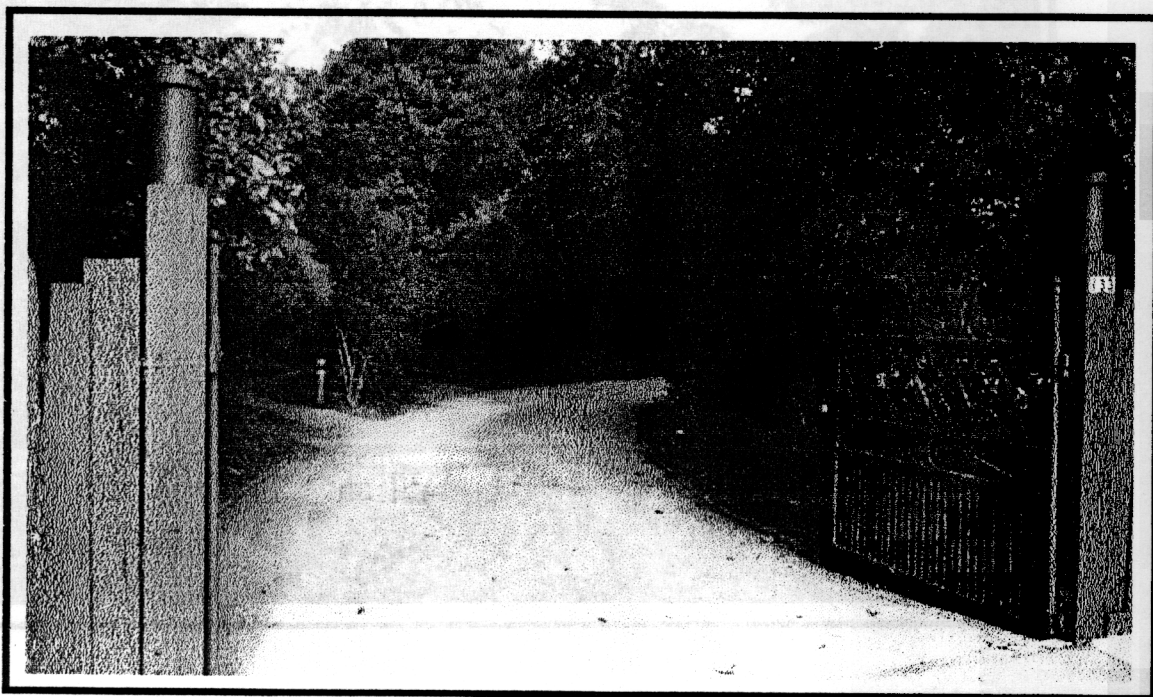
115

NOBLE STREET

⑪⑤ No. 133



RP 5.96 . NTS



HISTORY: This brick residence was built in 1923 for Robert Smith. By 1930 the house, now owned by Dennys Lascelles Ltd. was occupied by Lawrence Lee.¹

VISUAL DESCRIPTION: A large, three-bay, early Bungalow of red brick, with a Marseilles terracotta tile roof, consisting of a large gable set across. The deep eaves form a front verandah. There are attic windows in gablets on brackets, with mock shingles over four pane windows with diamond leadlight in the upper sashes. At centre, a hip projects as a balcony over a porch on triple posts. It is clad in mock shingles, the balcony battered on bullnosed joists. Chimneys decorated only with a soldier course, have terracotta pots and there are terracotta finials. Vehicular gates are metal tube and ribbon in curlicue over palisade pattern on posts with turned caps. There may be remnant trees.

SIGNIFICANCE: A large early brick Bungalow with an attic, built in 1923. It has architectural significance, partly diminished by its subsequent alterations as a School. It is representative of the Bungalow style, and historical significance in embodying the way of life of a well-to-do family in 1920s Newtown.

INTACTNESS: Reasonable. There is alteration for its use: at least one window has been replaced with metal frame, others as doors. The fence has been altered. It is now set in a bush garden.

CONDITION: Good. The roof needs maintenance.

¹ City of Newtown and Chilwell Ratebooks