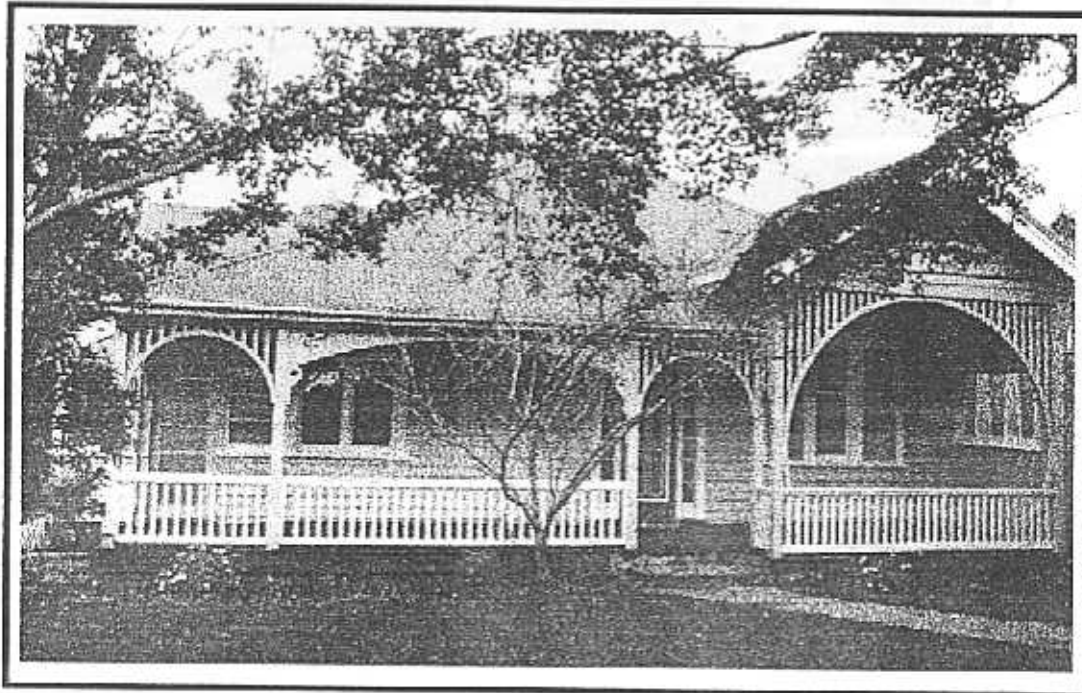
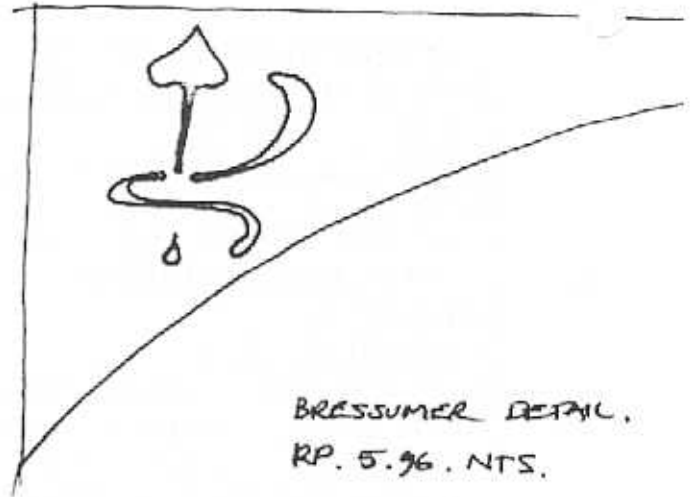


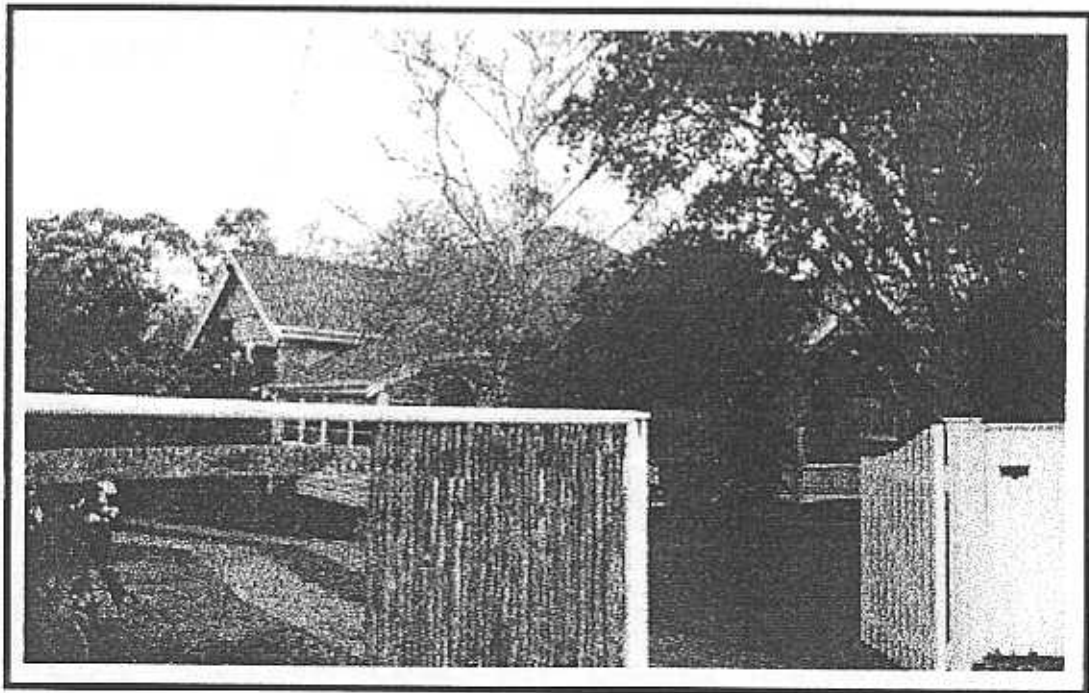
**NEWTOWN URBAN CONSERVATION STUDY. - 'C' CITATIONS. Ref: 114**  
 Richard Peterson Architect & Conservation Consultant. Daniel Catrice Historian 1996.

<b>NAME:</b> Weerona	
<b>ADDRESS:</b> 129 Noble Street.	
<b>USE:</b> House	
<b>CONSTRUCTION DATE:</b> 1915	<b>SOURCE:</b> Visual & 1
<b>ALTERATIONS/ADDITIONS:</b>	<b>DATE:</b> 1950s <b>SOURCE:</b> Visual
<b>DESIGNER:</b> —	<b>BUILDER:</b> —
<b>CRITERIA:</b> III; Ar1.	<b>HISTORIC THEME:</b> 2.3
<b>DESCRIPTION:</b> <b>STYLE:</b> Edwardian <b>STORIES:</b> 1 <b>DETACHED.</b>	
<b>MATERIALS:</b> <b>WALLS</b> Timber <b>ROOF</b> Iron <b>STRUCTURE</b> Stud	
<b>CONDITION:</b> Excellent. <b>INTACTNESS:</b> Very good. <b>THREATS:</b> —	
<b>SIGNIFICANT INTACT ELEMENTS:</b> FORM. FACADE. VERANDAH. ROOF FORM. VERANDAH DECORATION. CHIMNEYS. WINDOWS.	
<b>SIGNIFICANCE:</b>	
<b>TYPE:</b> HISTORICAL. ARCHITECTURAL.	
<b>LEVEL:</b> LOCAL.	
<b>DESIGNATION EXISTING:</b> PLANNING SCHEME.	
<b>RECOMMENDED CONTROL:</b> PLANNING SCHEME.	
<b>GRID REF:</b>	<b>SURVEY:</b> RP <b>DATE:</b> 19.5.96. <b>NEGS:</b> 5.23 & 24.





BRESSUMER DETAIL.  
RP. 5.96. NTS.



**HISTORY:** In 1915 this timber dwelling was built for Nathaniel Heard. Five years later the house, now known as Weerona was owned by Albeit and Emily Heard.<sup>1</sup>

**VISUAL DESCRIPTION:** A triple-fronted, hip-roofed, Edwardian house. Right and left side rear bays project as gables. The left gable is supported on convex palisade brackets, with a canted bay window. The verandah was around the angle (now only across the front, including under the gable). Here, the valence forms a horseshoe with a central bressummer, with fretwork plantforms and brackets. Upper lights are leadlight. Chimneys have render bands and terracotta pots.

**SIGNIFICANCE:** A characteristic Edwardian timber house, built in 1915. It has local architectural significance for its characteristic form, but particularly the generous verandah valence, with its horseshoe form and its fine organic fretwork details. It is historically significant as a representative embodiment of the family way of life of the period and its values, comfortable and assured, in Edwardian Newtown.

**INTACTNESS:** Very good. The left side verandah has been infilled with a skillion addition. The high fence is not appropriate. Perhaps the balustrade is later. Door and sidelights are 1960s.

**CONDITION:** Excellent.

---

<sup>1</sup> *City of Newtown and Chilwell Ratebooks.*