

<b>PLACE NAME</b>	Bareena Bowling Club	<b>LEVEL:</b> A
<b>ADDRESS</b>	89-101 Noble Street	
<b>AREA</b>	<b>DATE/PERSON</b> 13.5/RP	<b>NEG:</b> 3.3

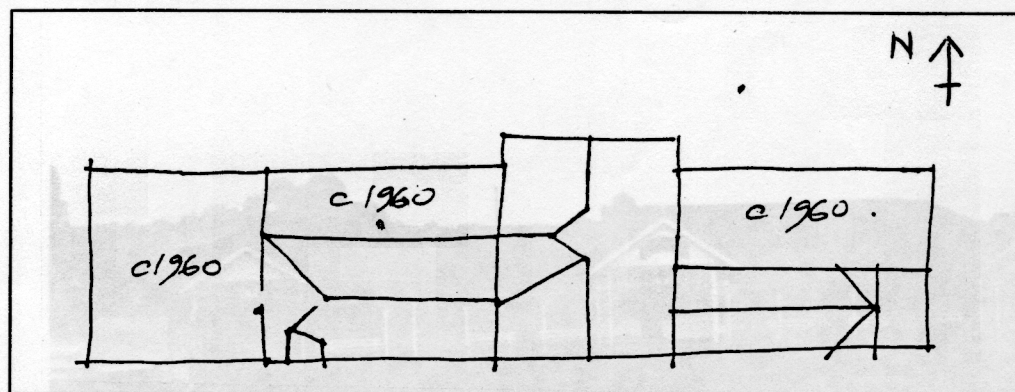


<b>DATES</b>	<b>Construction:</b>	c1915
<b>USE</b>	<b>Present Use:</b>	Public
	<b>Original Use:</b>	Same
	<b>Alterations?:</b>	West brick & rear timber additions c1960. Most north windows replaced. Alterations and additions to the buildings, grounds and car park.

<b>FORM</b>		<b>STYLE</b>	
Detached Single storey 11 Bays		Edwardian	
<b>DESCRIPTION</b>	(I = Intact A = Altered * = significant)		
<b>ROOF</b>	<b>WALLS</b>	<b>ROOF FORM</b>	
I Corr. Iron	I Timber	I Decoration	
		** Gable decoration	
<b>VERANDAH</b>	<b>FENESTRATION</b>	<b>FINISHES</b>	
* Form	I Doors		
** Decoration	A Windows		
<b>INTERIOR</b>	<b>GARDEN &amp; SETTING</b>	<b>OTHER COMMENTS</b>	
<b>CONDITION &amp; INTEGRITY</b>		<b>THREATS</b>	
Condition: Excellent			
Integrity: Altered			

## DESCRIPTION

An eleven-bay, Edwardian, hip-roofed, timber pavilion, with distinctive Art Nouveau decoration. The central and end gables facing north, project over the verandah. Between these, the roof sweeps down with broken pitch over the verandah. This is supported on timber posts, arrayed in clusters of three for the central pavilion, with sinuous curved brackets. The gables have timber shingle cladding and turned timber finials with a valence of rails and gloriously sinuous curved Art Nouveau timber tracery.



## HISTORY

As in most country towns, sport and recreation played a major role in the community life of Newtown. The Bareena Bowling Club at 89-101 Noble Street was opened in 1914<sup>234</sup>. An article in the Geelong Advertiser of 17 November 1913 tells of the desire for both tennis and bowling facilities to be provided. At a fair held in the grounds of the Bareena Recreation Club in Noble Street to raise funds "to promote the tennis section of the club", it was pointed out that,

Considerable liability has already been incurred in procuring the ground, erecting a pavilion, laying out the bowling green, and so on, and there is ample room for tennis also. With the funds raised by the fair, it will be possible to make a start with this section. In a very short time there will be our serviceable and attractive recreation grounds: the bowling green should be ready for play early in the new year.

The Bareena Recreation Club was rated for the first time in 1915, when the property was described as consisting of "Bowling Green, Tennis Courts and Club House", NAV 25 pounds<sup>235</sup>. The Bowling Club pavilion designed by the notable Geelong Architects, Buchan and Laird, was described by Richard Aitken in his study of Edwardian Buildings in Geelong as similar to the small tennis pavilion built before 1908 to serve the Geelong tennis courts in Corio Terrace. However, the Bareena Bowling Club pavilion was a much larger building.

Other comparable buildings are the Geelong College Cricket Pavilion (1904), and the Belmont Recreation Club pavilion (1910)<sup>236</sup>.

234. City Of Newtown & Chilwell Centenary, 1858-1958, p.11 (gives the opening date as 21 November, 1914); Gladys Seaton, Model Borough, City of Newtown, 1983, p.72 (gives opening date as 7 February, 1914).

235. Newtown rate book 1915-16 South Ward No 864.

236. Ibid.

A tennis pavilion was added to the Bareena Bowling Club in 1915. In that year, the club was rated for the first time when the property was described as consisting of "Bowling Green, tennis courts and Club House, NAV 25 pounds<sup>237</sup>". A long article in the Geelong Advertiser dated 20 March 1915, told how a second tennis court and members' pavilion had been added "which cost 55 pounds in material and in labour nothing". Its erection was carried out by club members, including the Newtown mayor.

By 1923<sup>238</sup> the Bareena Recreation Club's NAV had risen to 120 pounds, and continued at that amount at least into the late 1930s. The rate book of 1930 suggests that there were some additions in that year<sup>239</sup>.

## SIGNIFICANCE

This building constructed in 1915 by the Geelong architects, Laird and Buchan, has state historical significance as an example of the development of local community services and as an illustration of the major role typically played by sport and recreation in the community life of Victorian country towns. It has architectural significance at state level as an important recreational building and for the virtuosity in its gloriously sinuous Art Nouveau timber fretwork decoration.

---

## RECOMMENDATIONS

Existing Listings      NONE

Recommend'ns	HBR	RNE	LPS
	GBR		Place

---

---

237. Newtown rate book 1915-16 South Ward No 864.

238. Ibid 1923 No 944.

239. Ibid 1938 No 1044.