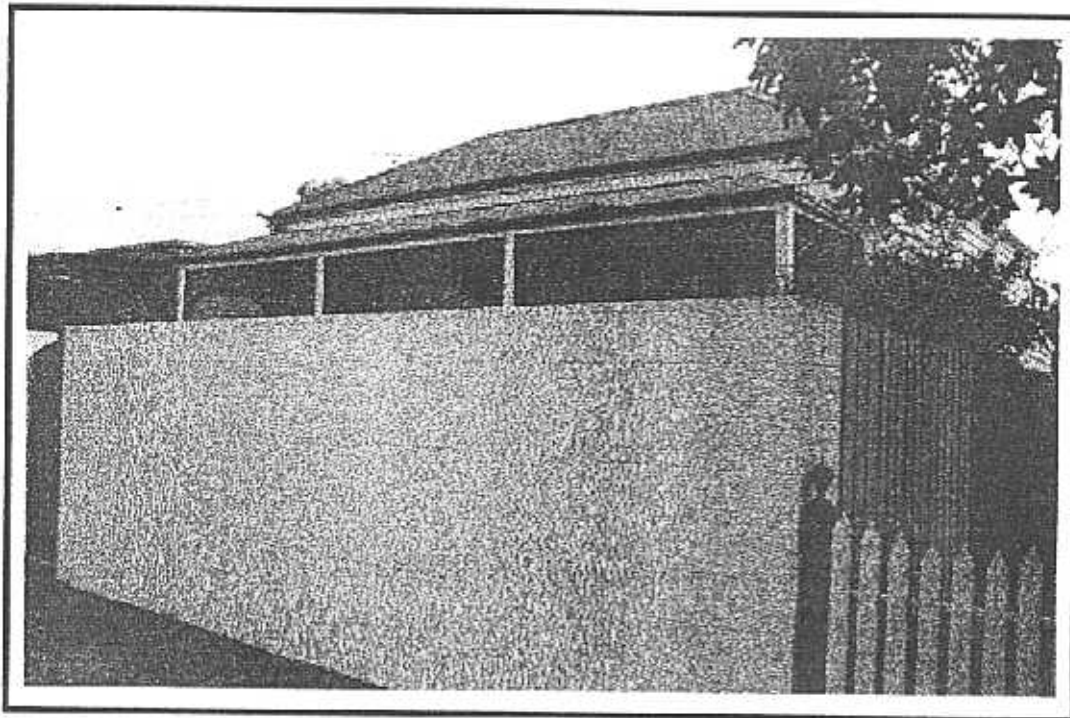


**NEWTOWN URBAN CONSERVATION STUDY. - 'C' CITATIONS. Ref: 111**  
 Richard Peterson Architect & Conservation Consultant, Daniel Catrice Historian 1996.

<b>NAME:</b> —		
<b>ADDRESS:</b> 30 Marshall Street.		
<b>USE:</b> House		
<b>CONSTRUCTION DATE:</b> 1893-4	<b>SOURCE:</b> 1	
<b>DESIGNER:</b> —	<b>BUILDER:</b> —	
<b>CRITERIA:</b> H1, Ar1.	<b>HISTORIC THEME:</b> 2.2	
<b>DESCRIPTION:</b> STYLE: Early	<b>STORIES:</b> 1	<b>DETACHED.</b>
<b>MATERIALS:</b> WALLS Timber	<b>ROOF</b> Iron	<b>STRUCTURE</b> Stud
<b>CONDITION:</b> Very good.	<b>INTACTNESS:</b> Good.	<b>THREATS:</b> —
<b>SIGNIFICANT INTACT ELEMENTS:</b> FORM. FACADE. VERANDAH. ROOF FORM. VERANDAH DECORATION. CHIMNEY. DOOR. WINDOW. CONTEXT Ref: 110.		
<b>SIGNIFICANCE:</b> <b>TYPE:</b> HISTORICAL. ARCHITECTURAL. <b>LEVEL:</b> LOCAL.		
<b>DESIGNATION EXISTING:</b> PLANNING SCHEME.		
<b>RECOMMENDED CONTROL:</b> PLANNING SCHEME. ADP		
<b>GRID REF:</b>	<b>SURVEY:</b> RP	<b>DATE:</b> 19.5.96. <b>NEGS:</b> 5.19 & 20.



**HISTORY:** This wooden cottage was built in 1893-94 for Mary Ann Ricketts. By 190, the house was owned by Joseph Ricketts, who had built a cottage next door in 1889 [Ref. 110]. In the mid-1910s Joseph Ricketts sold the house to Arthur Ricketts, who lived here into the 1930s.<sup>1</sup>

**VISUAL DESCRIPTION:** A double fronted, symmetrical Early cottage with a hipped roof. It has a shallow convex hipped verandah, with cast-iron lace, valence and brackets. One part retains its moulding. The door has a fanlight and there is a 12-paned double-hung window surviving at right side. The chimney is corbelled brown brick.

**SIGNIFICANCE:** A characteristic Early timber house built in 1893-4, surviving on the smaller "workingmen's" allotments around Chilwell, becoming rarer due to demolition or adaptation to current needs. Architecturally significant locally as representative of an early "workingmen's" cottage and historically significant as a representative embodiment of the worker's way of life in early Newtown.

**INTACTNESS:** Good. The lace may be recent. The high concrete block fence is not appropriate.

**CONDITION:** Very good.

---

<sup>1</sup> *City of Newtown and Chilwell Ratebooks.*