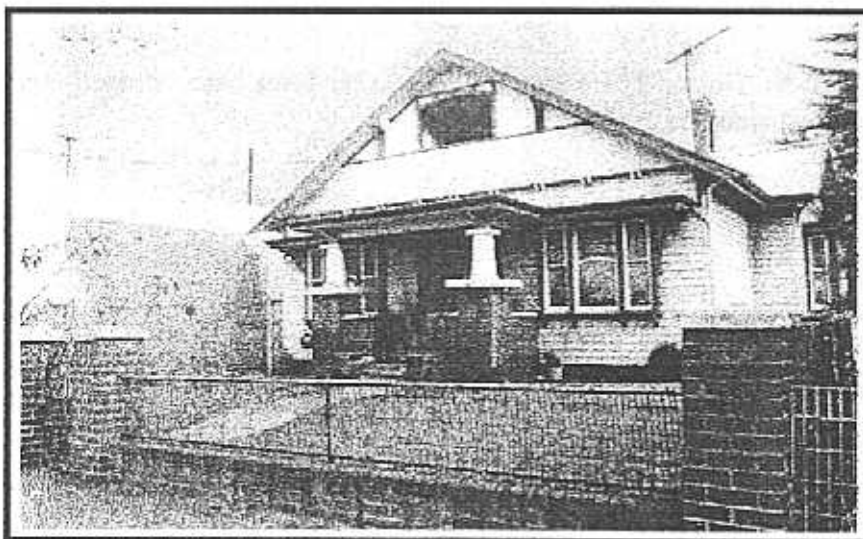


NEWTOWN URBAN CONSERVATION STUDY. - 'C' CITATIONS. Ref: 81

Richard Peterson Architect & Conservation Consultant. Daniel Catrice Historian 1996.

NAME: —			
ADDRESS: 398 Latrobe Terrace.			
USE: House.			
SIGNIFICANT DATE:		CONSTRUCTION DATE: 1927	SOURCE: Visual & 1
ALTERATIONS/ADDITIONS:		DATE: 1940s	SOURCE: Visual.
DESIGNER:		BUILDER:	
CRITERIA: H1, A1		HISTORIC THEME:	
DESCRIPTION: STYLE: Bungalow		STORIES: 2	DETACHED.
MATERIALS: WALLS Timber		ROOF: Iron	STRUCTURE: Stud
CONDITION: Good. INTACTNESS: Excellent THREATS: needs some maintenance.			
SIGNIFICANT INTACT ELEMENTS: FORM. VERANDAH. ROOF FORM. USE. GABLE DECORATION. VERANDAH DECORATION. CHIMNEY. DOORS. WINDOWS. PAINTWORK SCHEME. FENCES/ GATES.			
SIGNIFICANCE:			
TYPE: HISTORICAL. ARCHITECTURAL.			
LEVEL: LOCAL.			
DESIGNATION EXISTING: PLANNING SCHEME.			
RECOMMENDED CONTROL: PLANNING SCHEME.			
GRID REF:	SURVEY: RP	DATE: 5.5.96	NEGS: 4. 13 & 14



HISTORY: This house was built in 1927 for Edith Kernot who leased the dwelling to woolsorter, Richard Fraser.¹

VISUAL DESCRIPTION: A single-storey timber, symmetrical double fronted Californian Bungalow with an attic, on a brick base. It has a large gable-roof facing, with a minor gable at right with a rectangular bay window. Gutters are the original ogee profile, gables are supported on curved brackets. The upper front gable has vertical strips as a ventilator, on bull-nosed brackets. Below is a recessed balcony, with curved transom and canvas sun-blind. Below are shingles, battered at their base on bull-nosed bracket pairs. There is a flat roofed, central porch, continuing at sides as window hoods, with impressive deep brackets: ogee for the porch and curved for the windows. The porch is supported on squat Tuscan columns on plates, supported by bull-nosed brick brackets on tuck-pointed brick piers and balustrade. Brick steps have plate pedestals.

The entrance itself is recessed with double leadlight Edwardian doors. Windows are tripartite, projecting on bull-nosed brackets with curved transoms and leadlight upper sashes. The fence is woven crimp-wire mesh and tubular rails on a brick dwarf wall and piers with two pedestrian gates of curlicue ribbon and tube, with a barley sugar palisade panel. At right is a lattice side screen.

SIGNIFICANCE: A timber Californian Bungalow built in 1927. It is architecturally significant as a particularly intact characteristic example of this domestic style including contextual elements such as fence, gates and side screen. It is historically significant as a representative embodiment of family life in Newtown in the 1920s.

INTACTNESS: Excellent. The paintwork and colour scheme may well be original.

CONDITION: Good. There may be damp in the brick base. It needs some maintenance and may be unoccupied.

¹ City of Newtown and Chilwell Ratebooks.

