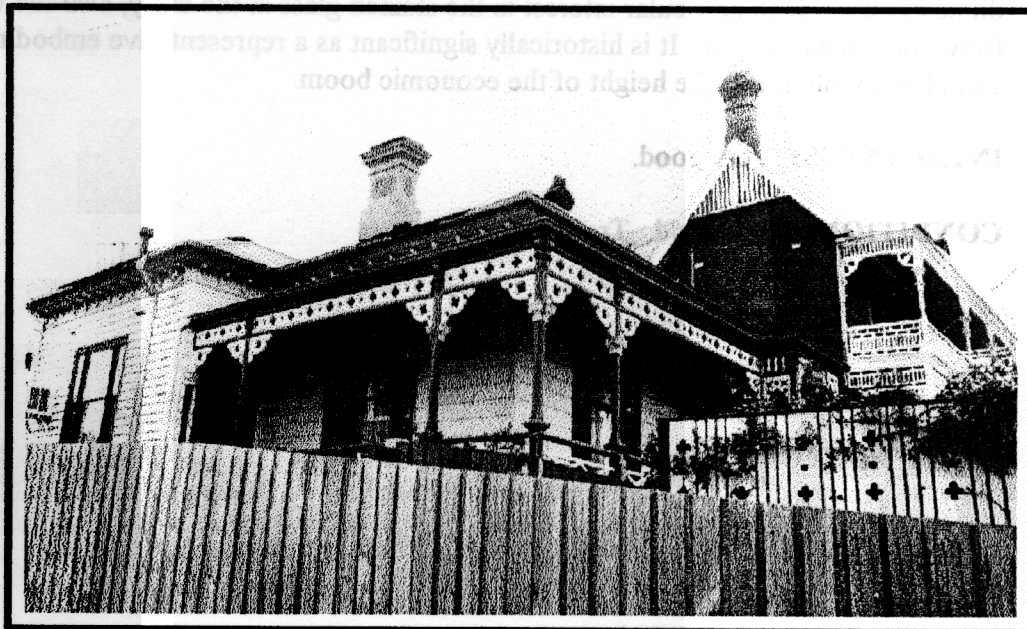


NEWTOWN URBAN CONSERVATION STUDY. - 'C' CITATIONS. Ref: 78
Richard Peterson Architect & Conservation Consultant. Daniel Catrice Historian 1996.

NAME: Koringa	
PREVIOUS NAME: Westville	
ADDRESS: 294 Latrobe Terrace	
USE: House.	
CONSTRUCTION DATE: 1892	SOURCE: Visual & 1
DESIGNER: —	BUILDER: —
CRITERIA: H1, Ar1.	HISTORIC THEME: 2.3
DESCRIPTION: STYLE: Italianate	STORIES: 1 DETACHED.
MATERIALS: WALLS Timber	ROOF Iron STRUCTURE Stud.
CONDITION: Very good.	INTACTNESS: Very good. THREATS: Traffic
SIGNIFICANT INTACT ELEMENTS: FORM. VERANDAH. ROOF FORM. EAVES DECORATION. VERANDAH DECORATION. CHIMNEYS. WALL DECORATION. *DOORS. WINDOWS. PAINTWORK SCHEME. CONTEXT No 292. NAME PLATE*. STAINED GLASS.	
SIGNIFICANCE:	
TYPE: HISTORICAL. ARCHITECTURAL.	
LEVEL: LOCAL.	
DESIGNATION EXISTING: PLANNING SCHEME.	
RECOMMENDED CONTROL: PLANNING SCHEME.	
GRID REF:	SURVEY: RP DATE: 16.3.96 NEGS: 3.36



HISTORY: This house was built by James Watt in 1891-92. Soon after its completion Watt sold the house to Charles Edward Stanesby who worked as a telegraph operator. Stanesby called the house Westville. He sold the property to F.R. Podbury in the mid-1920s. Podbury sold to farmers, Flora and William Garratt in 1930. Maragaret Garratt was listed as occupant of the house soon after its sale.¹

VISUAL DESCRIPTION: An elevated, eclectic late Italianate timber house. It is clad with mock ashlar timber. Chimneys have Classical moulds and vermiculated panels with coved angles. Eaves have a decorative valence, brackets and lozenges between. The hip verandah extends all around, with valence panels over a rail, pierced with quatrefoils and discs, with similar brackets. Its bevelled posts have cast zinc Corinthian capitals. It returns to a bay projecting at left side rear.

Windows are tripartite with barley sugar mullions. The elaborate central entrance has side and fanlights and a six-panelled door with mullions with detached turned and moulded colonette shafts and quatrefoil incised decoration. The verandah projects as the entrance as a gable with turned spindle palisade decoration. The fanlight has a name inscribed in fine gold leaf and there are important small painted bird motif panels in the side lights.

COMPARATIVE ANALYSIS: 292 Latrobe Terrace. Ref: 77.

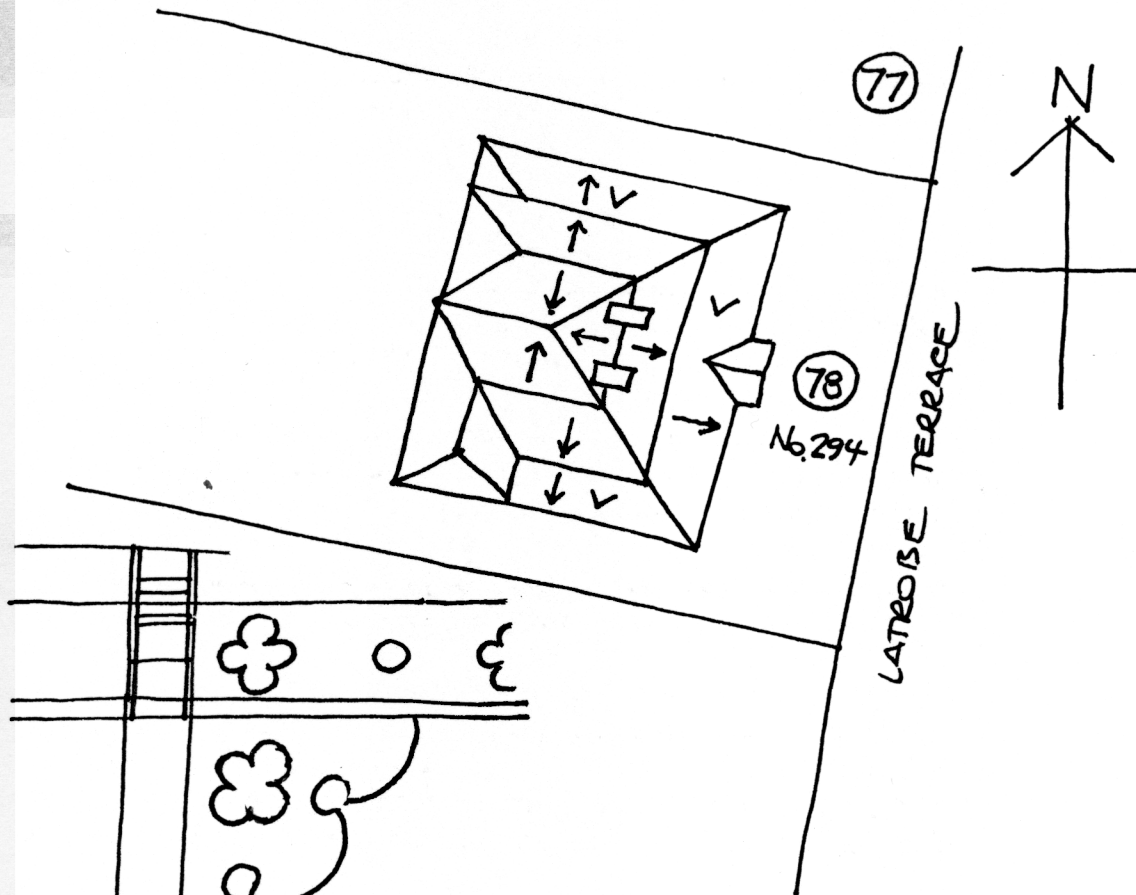
SIGNIFICANCE: Koringa (formerly Westville) is an impressive timber late Italianate house built in 1892-93. It is architecturally significant locally as characteristic of this domestic style, with particular interest in the stained glass at the entry, also the verandah fretwork and nameplate. It is historically significant as a representative embodiment of confident family life at the height of the economic boom.

INTACTNESS: Very good.

CONDITION: Very good. Traffic pollution.



¹ City of Newtown and Chilwell Ratebooks.



VERANDAH
VALENCE & BRACKET
DETAIL.

REP, 5.96. NTS.