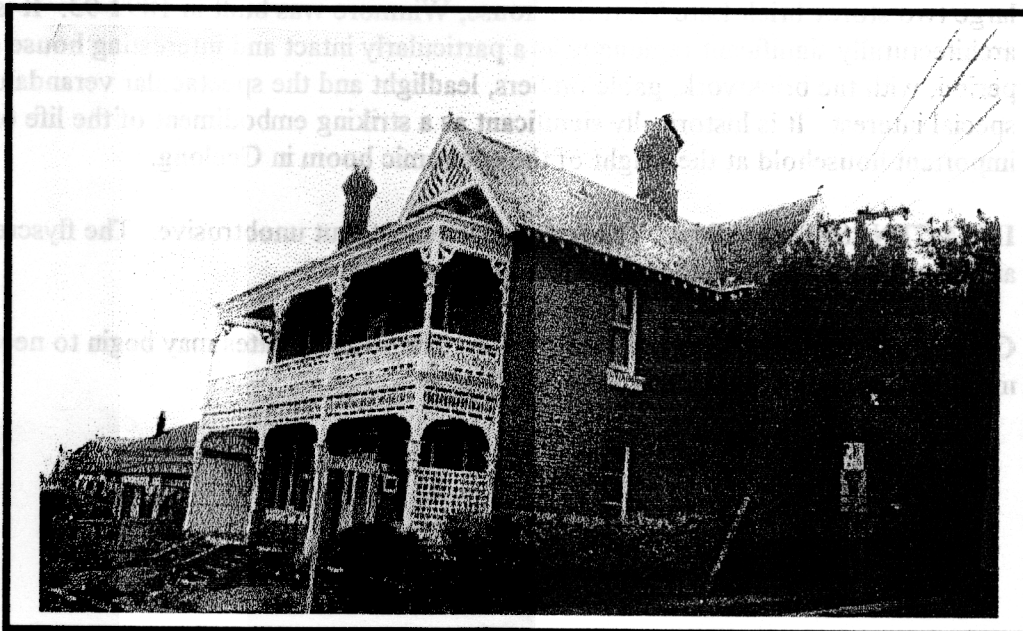


NEWTOWN URBAN CONSERVATION STUDY. - 'C' CITATIONS. Ref: 77

Richard Peterson Architect & Conservation Consultant. Daniel Catrice Historian 1996.

NAME: Royal Commonwealth Society	
PREVIOUS NAME: Winmore	
ADDRESS: 292 Latrobe Terrace (South-west cnr Laurel Bank Parade)	
USE: Club.	
PREVIOUS USE: House	
CONSTRUCTION DATE: 1892-3	SOURCE: Visual & 1
DESIGNER: —	BUILDER: —
CRITERIA: H1, Ar1, Ar3.	HISTORIC THEME: 2.3
DESCRIPTION: STYLE: Late Victorian STORIES: 1 DETACHED.	
MATERIALS: WALLS Brick ROOF Slate STRUCTURE Lb.	
CONDITION: Very good. INTACTNESS: Excellent. THREATS: Traffic.	
SIGNIFICANT INTACT ELEMENTS:	
MATERIALS. Bluestone, slate, brickwork. FORM. FACADE. VERANDAH. ROOF FORM. GABLE DECORATION. ROOF DECORATION. VERANDAH DECORATION. CHIMNEYS. DOORS. WINDOWS. UNPAINTED FINISH. Brickwork. CONTEXT Nos. 288, 290, 294.	
SIGNIFICANCE:	
TYPE: HISTORICAL. ARCHITECTURAL.	
LEVEL: REGIONAL.	
DESIGNATION EXISTING: PLANNING SCHEME.	
RECOMMENDED CONTROL: RNE. PLANNING SCHEME.	
GRID REF:	SURVEY: RP DATE: 16.3.96 NEGS: 3.35



HISTORY: This house was built in 1892-93 for Martha Prude. At the time of construction, the house comprised ten rooms, stables and coach house. Prude lived here until the turn of the century when manager Thomas James bought the property. His tenure was short-lived for in 1905 gentleman David McHarry was listed as owner. During McHarry's period of ownership the house was known Wimmore.¹

VISUAL DESCRIPTION: An impressive gable-roofed, symmetrical, late Victorian double-storey house of three bays. It is brown brick, in Flemish bond with a slate roof. There is a gable facing each direction, with upper gables jettying on deep ogee timber brackets and unusual diagonal wavy timbering. The three Venetian chimneys are deeply corbelled, with terra-cotta pots and there are three gable vents. Rafters are exposed. Both ground floor windows are tripartite, with cill moulds and apron. Lintels are soldier coursed red bricks. The entry has leadlight side and fanlights, with a rising sun motif and square Doric mullions.

The timber verandah is spectacular. It has a palisade square and turned spindle valance over a rail, with coved brackets, turned posts with square capitals. The first floor balustrade is similar, with rising sun quadrant brackets. Lattice and bonded screens terminate the verandah ends.

The building's base and steps are rock-face bluestone.

SIGNIFICANCE: The Royal Commonwealth Society building, formerly the impressive large two storey brick Late Victorian house, Winmore was built in 1892-93. It is architecturally significant regionally as a particularly intact and interesting house of the period, with the brickwork, gable timbers, leadlight and the spectacular verandah of special interest. It is historically significant as a striking embodiment of the life of an important household at the height of the economic boom in Geelong.

INTACTNESS: Excellent. The stair-rail is recent, but unobtrusive. The flyscreen door and bluestone dwarf boundary-wall are not appropriate.

CONDITION & THREATS: Very good. The roofing slates may begin to need some maintenance. Traffic vibration and pollution.

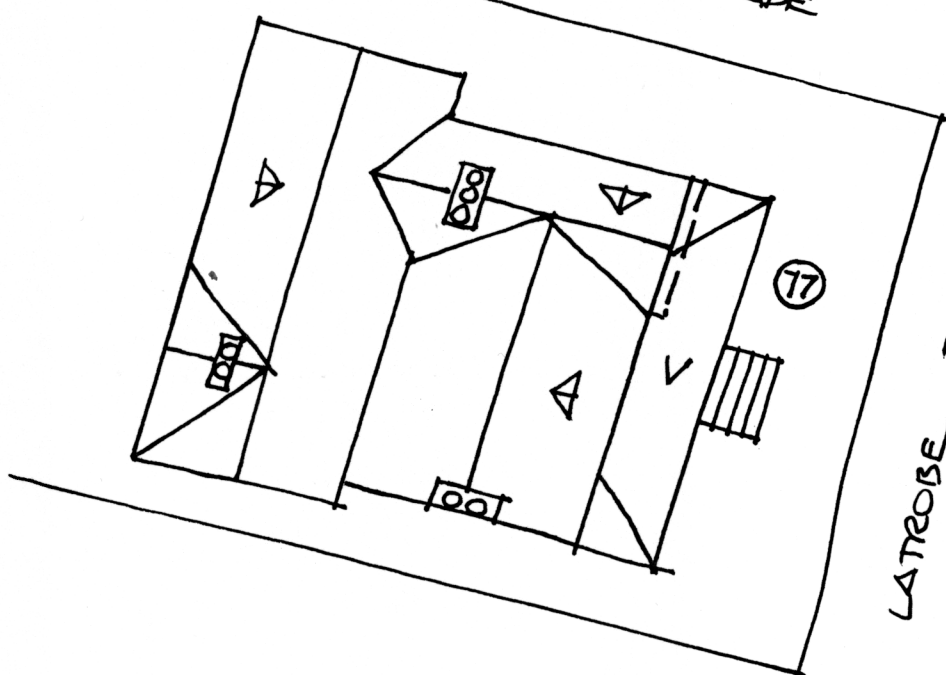
¹ City of Newtown and Chilwell Ratebooks.

77



76

LAUREL BANK PARADE



LATROBE TERRACE

78

RP. 5.26. NTS.