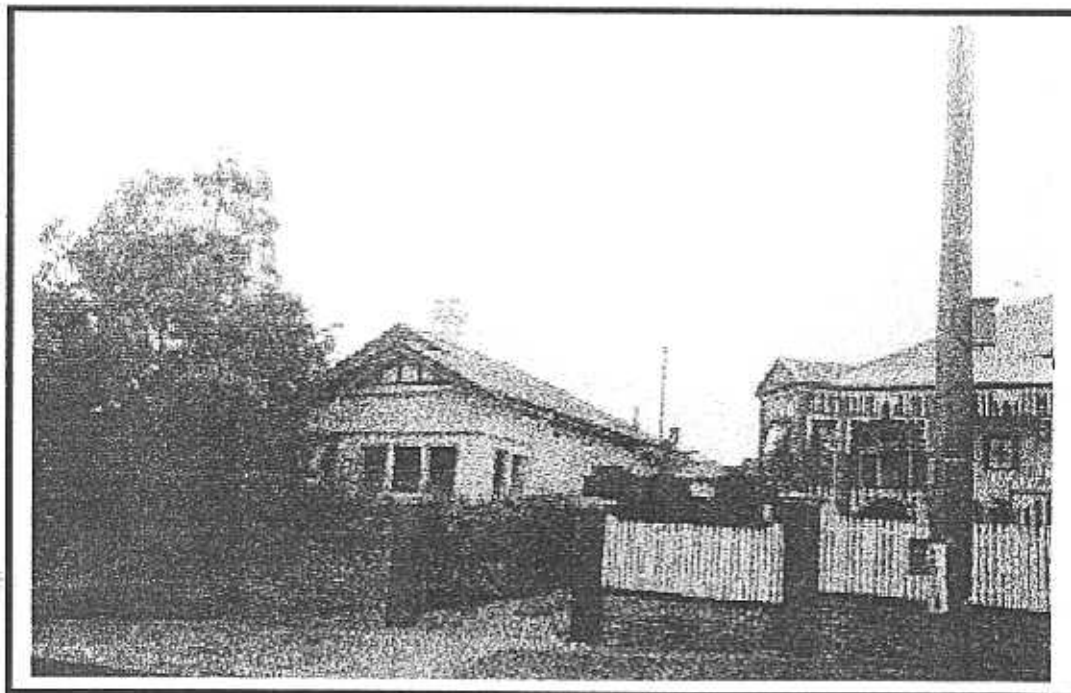


**NEWTOWN URBAN CONSERVATION STUDY. - 'C' CITATIONS. Ref: 76**  
 Richard Peterson Architect & Conservation Consultant, Daniel Catrice Historian 1996.

<b>NAME:</b> —	
<b>PREVIOUS NAME:</b> Craigeith.	
<b>ADDRESS:</b> 290 Latrobe Terrace ( North-west cnr Laurel Bank Parade).	
<b>USE:</b> House.	
<b>CONSTRUCTION DATE:</b> 1910-11	<b>SOURCE:</b> Visual & 1
<b>DESIGNER:</b> —	<b>BUILDER:</b> —
<b>CRITERIA:</b> H1, Ar1.	<b>HISTORIC THEME:</b> 2.3
<b>DESCRIPTION:</b> STYLE: Edwardian/ Californian Bungalow STORIES: 1 DETACHED.	
<b>MATERIALS:</b> WALLS Timber	ROOF Iron STRUCTURE Stud.
<b>CONDITION:</b> Very good.	INTACTNESS: Fair. THREATS: Traffic.
<b>SIGNIFICANT INTACT ELEMENTS:</b> FORM. VERANDAII. ROOF FORM. CHIMNEY. DOORS. WINDOWS. PAINTWORK SCHEME.	
<b>SIGNIFICANCE:</b>	
<b>TYPE:</b> HISTORICAL. ARCHITECTURAL.	
<b>LEVEL:</b> LOCAL.	
<b>DESIGNATION EXISTING:</b> PLANNING SCHEME.	
<b>RECOMMENDED CONTROL:</b> PLANNING SCHEME.	
<b>GRID REF:</b>	<b>SURVEY:</b> RP <b>DATE:</b> 16.3.96 <b>NEGS:</b> 3.34 & 35.



**HISTORY:** Clerk, Charles Smith, was the owner of this allotment on Buckland's Paddock in 1910. A house built in 1910-11. Smith lived here until the mid-1920s when the house, known as Craigleith, was leased to seedsman, Cyril Cooke.<sup>1</sup>

**VISUAL DESCRIPTION:** An elevated, double-fronted, timber house, transitional between Edwardian and Californian Bungalow. It has a gable-roof facing, with right and left side rear bays projecting and a verandah under the main roof, ogee brackets and is supported on Doric square post pairs on brick piers. Chimneys have brick mouldings and terra-cotta pots.

**SIGNIFICANCE:** Former Craigleith is a timber Edwardian house built in 1910-11, with some apparently Californian Bungalow elements. It has local architectural significance, despite reduced value due to alterations, as characteristic of this style and historical significance as a representative embodiment of life in Newtown before the Great War.

**INTACTNESS:** Fair. The verandah has been infilled, chimneys are painted. There is an inappropriate high brick fence and an addition at rear.

**CONDITION & THREATS:** Very good. Gutters are filled with leaves fallen from overhanging branches, which should be lopped. This risks blockages which may cause ceiling leaks. Traffic pollution.

---

<sup>1</sup> City of Newtown and Chilwell Ratebooks.

