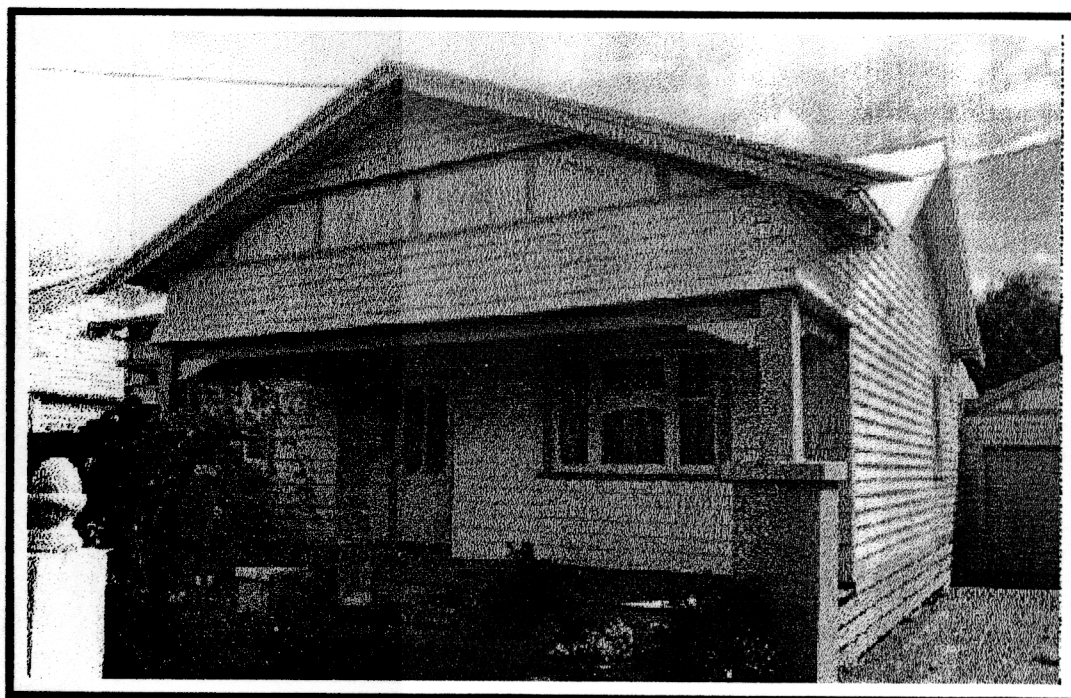


NEWTOWN URBAN CONSERVATION STUDY. - 'C' CITATIONS. Ref: 71
Richard Peterson Architect & Conservation Consultant. Daniel Catrice Historian 1996.

NAME: —	
ADDRESS: 51 George Street	
USE: House.	
CONSTRUCTION DATE: 1923	SOURCE: Visual & 1
DESIGNER: —	BUILDER: —
CRITERIA: H1, Ar1.	HISTORIC THEME: 2.3
DESCRIPTION: STYLE: Californian Bungalow STORIES: 1 DETACHED.	
MATERIALS: WALLS Timber ROOF Iron STRUCTURE Stud.	
CONDITION: Excellent INTACTNESS: Very good. THREATS: —	
SIGNIFICANT INTACT ELEMENTS: FORM. FACADE. VERANDAH. ROOF FORM. GABLE DECORATION. VERANDAH DECORATION. DOOR. WINDOWS. CONTEXT Nos. 47, 49, 53, 55.	
SIGNIFICANCE: TYPE: HISTORICAL. ARCHITECTURAL. LEVEL: LOCAL.	
DESIGNATION EXISTING: PLANNING SCHEME. RECOMMENDED CONTROL: PLANNING SCHEME.	
GRID REF:	SURVEY: RP DATE: 16.3.96 NEGS: 3.27



HISTORY: This house was built for clerk George Bonney and his family in 1923. The cost of construction was £850 (\$1,700).¹

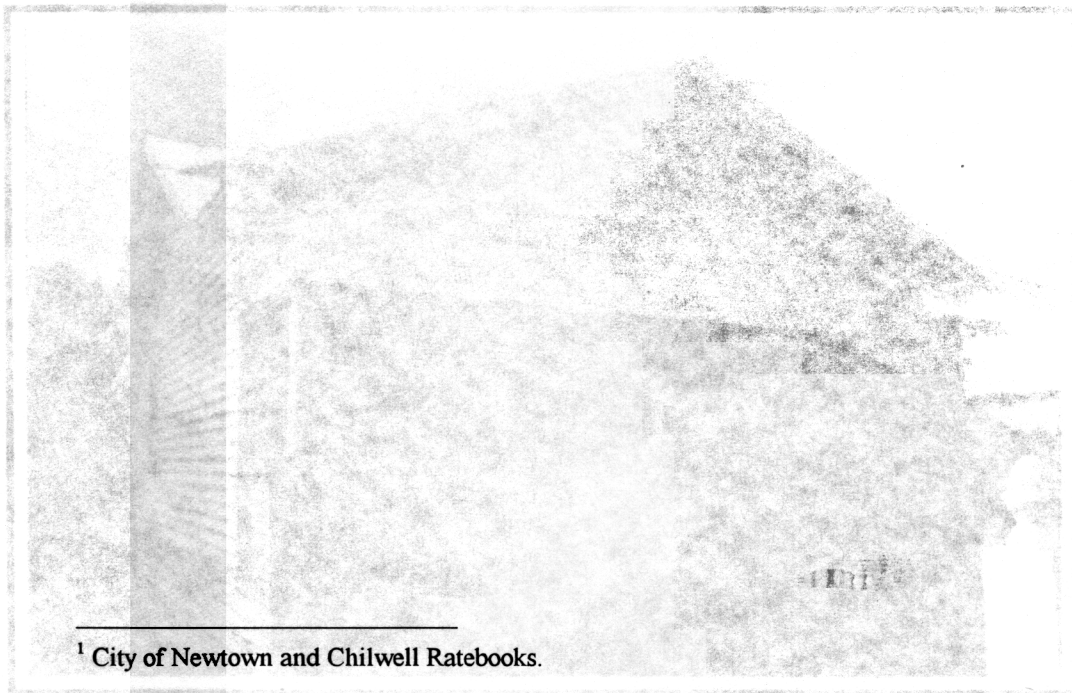
VISUAL DESCRIPTION: A double-fronted timber Californian Bungalow with a gable roof across. At right is a gable facing, over the verandah, the entrance recessed. The upper gable is timber and weatherboard, supported on timber posts over rendered brick piers with plate tops and ogee brackets. Windows are triples, with segmental head, lower central sashes and leadlight upper sashes. The entrance has an Edwardian door with sidelights and leadlight upper panes. The left window has a flat hood on ogee brackets.

COMPARATIVE ANALYSIS: Nos 47, 49, 53 and 55 George Street.

SIGNIFICANCE: A timber Californian Bungalow built in 1923. It is architecturally significant locally as a characteristic example of this domestic style and historically significant as a representative embodiment of family life in 1920s Newtown.

INTACTNESS: Excellent. The garage and fence are recent. The fence is anachronistic.

CONDITION: Excellent.



¹ City of Newtown and Chilwell Ratebooks.