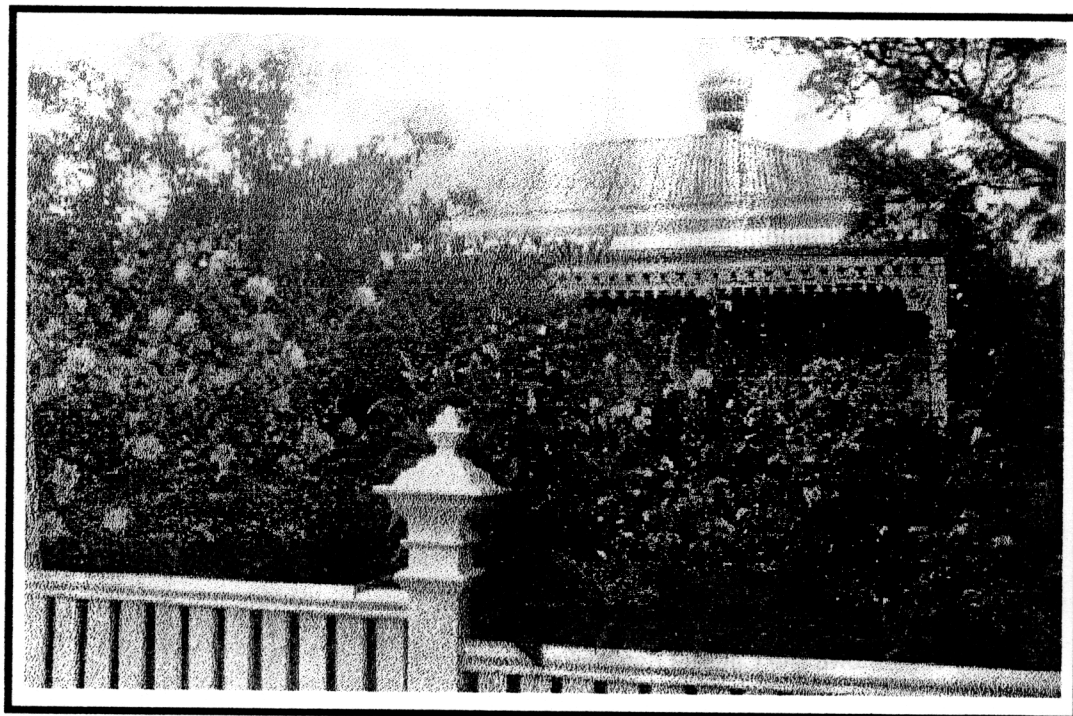


**NEWTOWN URBAN CONSERVATION STUDY. - 'C' CITATIONS. Ref: 67**

**Richard Peterson Architect & Conservation Consultant. Daniel Catrice Historian 1996.**

<b>NAME:</b> Evesham			
<b>ADDRESS:</b> 13 Claremont Avenue.			
<b>USE:</b> House.			
<b>CONSTRUCTION DATE:</b> 1890		<b>SOURCE:</b> Visual & 1	
<b>DESIGNER:</b> —		<b>BUILDER:</b> —	
<b>CRITERIA:</b> H1; Ar1.		<b>HISTORIC THEME:</b> 2.3	
<b>DESCRIPTION:</b> <b>STYLE:</b> Italianate <b>STORIES:</b> 1 <b>DETACHED.</b>			
<b>MATERIALS:</b> <b>WALLS</b> Timber <b>ROOF</b> Iron <b>STRUCTURE</b> Stud.			
<b>CONDITION:</b> Excellent. <b>INTACTNESS:</b> Very good. <b>THREATS:</b> -			
<b>SIGNIFICANT INTACT ELEMENTS:</b> FORM. FACADE. VERANDAH. ROOF FORM. EAVES DECORATION. VERANDAH DECORATION. CHIMNEYS. DOORS. WINDOWS. CONTEXT Nos. 11, 15 & 17.			
<b>SIGNIFICANCE:</b> <b>TYPE:</b> HISTORICAL. ARCHITECTURAL. <b>LEVEL:</b> LOCAL.			
<b>DESIGNATION EXISTING:</b> PLANNING SCHEME.			
<b>RECOMMENDED CONTROL:</b> PLANNING SCHEME.			
<b>GRID REF:</b>	<b>SURVEY:</b> RP	<b>DATE:</b> 27.1.96	<b>NEGS:</b> 3.10



**HISTORY:** Evesham was built in 1890 for gentleman, James Restall. Subsequent owners included gentlemen Duncan McCallum, Ince and Margaret O'Farrell and salesman Clarence Eggington.<sup>1</sup>

**VISUAL DESCRIPTION:** A double-fronted, hip-roofed, symmetrical, timber Italianate house. Chimneys are brown brick with Classical mouldings. Eaves have pendant spindle, paired brackets, with panels between. The verandah is bullnosed hip, with a cast-iron lace valance and brackets and Corinthian posts. Windows are tripartite and the entrance has a four-panelled door with side and fan-lights.

**SIGNIFICANCE:** Evesham is a timber symmetrical Italianate house built in 1890. It is architecturally significant locally as characteristic of this domestic style, with the delicate cast-iron lace of particular interest. It is historically significant as the representative embodiment of comfortable family life at the height of the economic boom.

**INTACTNESS:** Very good. The flyscreen door, balustrade and fence are recent.

**CONDITION:** Excellent.

---

<sup>1</sup> City of Newtown and Chilwell Ratebooks.