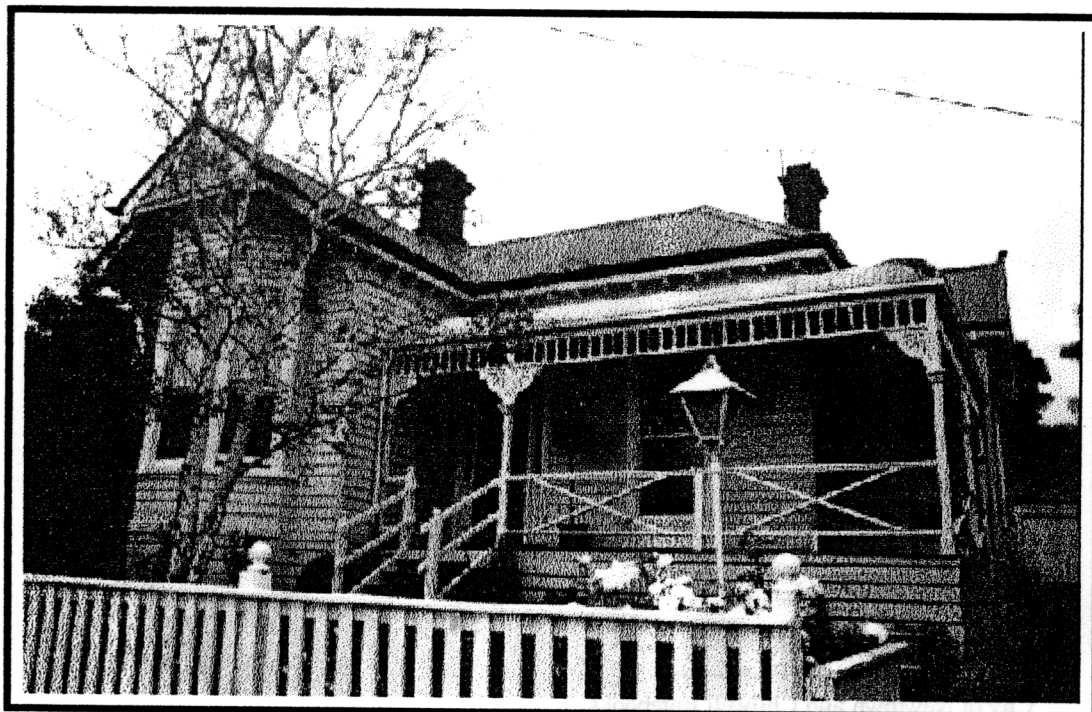


NEWTOWN URBAN CONSERVATION STUDY. - 'C' CITATIONS. Ref: 39
Richard Peterson Architect & Conservation Consultant. Daniel Catrice Historian 1996.

NAME: —			
ADDRESS: 4 Buckland Avenue.			
USE: House.			
PREVIOUS USE:			
SIGNIFICANT DATE:		CONSTRUCTION DATE: c1890	SOURCE: Visual.
DESIGNER: —		BUILDER: —	
CRITERIA: H1; Ar1.		HISTORIC THEME: 2.3	
DESCRIPTION: STYLE: Late Victorian STORIES: 1 DETACHED.			
MATERIALS: WALLS Timber		ROOF Iron	STRUCTURE Stud.
CONDITION: Excellent.		INTACTNESS: Very good.	THREATS: -
SIGNIFICANT INTACT ELEMENTS: FORM. VERANDAH. ROOF FORM. GABLE DECORATION. EAVES DECORATION. ROOF DECORATION. VERANDAH DECORATION. CHIMNEYS. WALL DECORATION. DOORS. WINDOWS. CONTEXT: Nos. 2,3,5,6,8			
SIGNIFICANCE:			
TYPE: HISTORICAL. ARCHITECTURAL.			
LEVEL: LOCAL.			
DESIGNATION EXISTING: PLANNING SCHEME.			
RECOMMENDED CONTROL: PLANNING SCHEME.			
GRID REF:	SURVEY: RP	DATE: 26.1.96	NEGS: 2.13



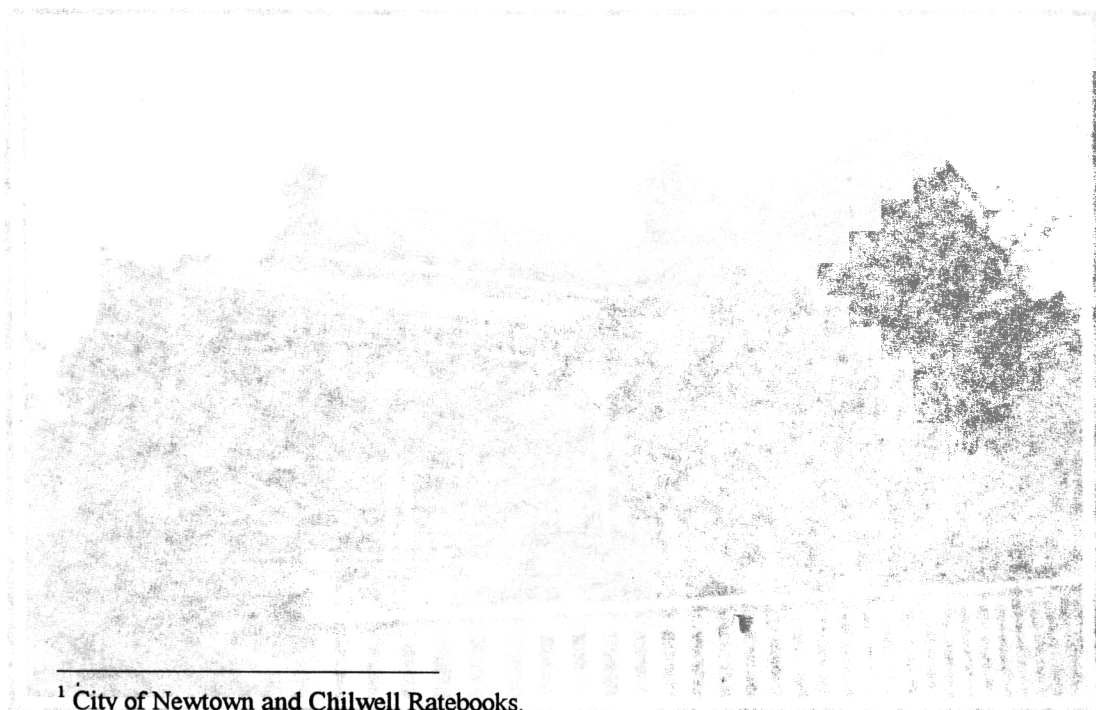
HISTORY: In the late 1890s, Bucklands Paddock was subdivided for housing development. Richard Robinson, a plumber by trade, purchased one of the allotments and built this timber house. He sold the house in the mid-1910s to Isabella Robinson who was still living there in the 1930s.¹

VISUAL DESCRIPTION: An elevated, late Victorian, timber, triple-fronted, hip-roofed house. The left front and right side rear bays project as gables. These have metal finials and the upper gable jettys with mock shingles and timbering, supported on convex and ogee brackets, with shaped barges, over a canted bay window with mock shingles in the upper part. There are ogee eaves brackets. A bullnosed verandah returns around the angle with a turned spindle palisade over a rail, with Chrysanthemum patterned side and fan-lights and brackets and a four-panelled door.

SIGNIFICANCE: A timber late Victorian house built in the 1890s incorporating the fashionable chrysanthemum motif. It is architecturally significant locally as characteristic of this late style and historically significant as a representative embodiment of life in Newtown late in the last century.

INTACTNESS: Very good. The balustrade, fence and lamp standard are recent.

CONDITION: Excellent.



¹ City of Newtown and Chilwell Ratebooks.