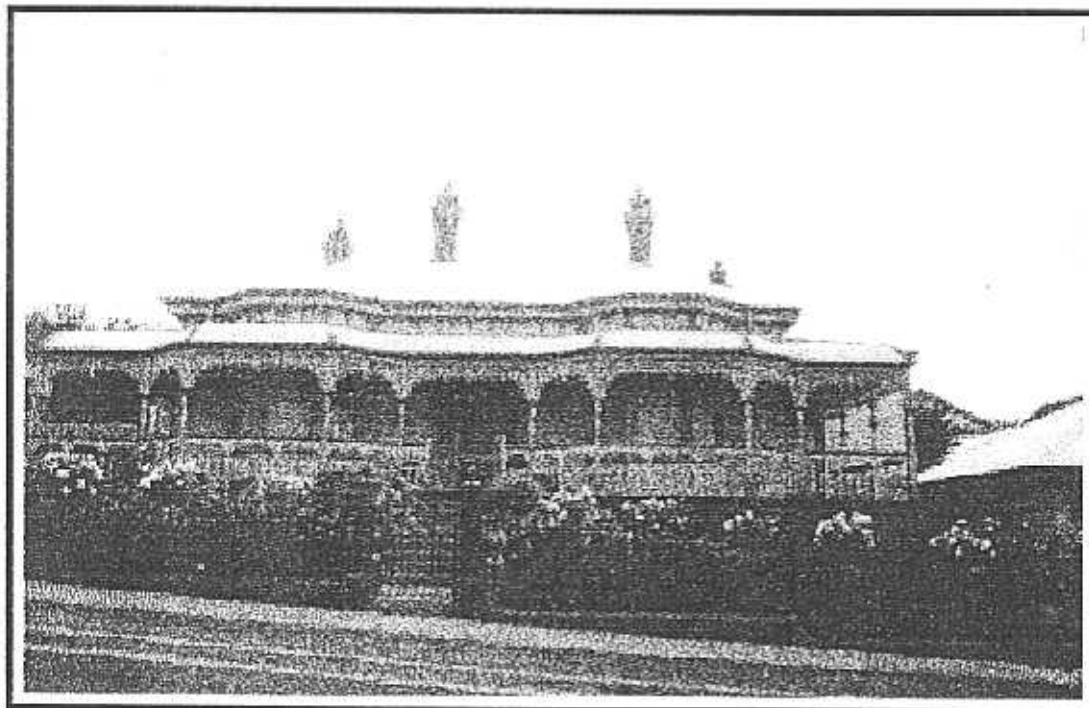


**NEWTOWN URBAN CONSERVATION STUDY. - 'C' CITATIONS. Ref: 42**  
 Richard Peterson Architect & Conservation Consultant. Daniel Catrice Historian 1996.

<b>NAME:</b> —			
<b>ADDRESS:</b> 8 Buckland Avenue.			
<b>USE:</b> House.			
<b>CONSTRUCTION DATE:</b> c1912		<b>SOURCE:</b> Visual & 1	
<b>ALTERATIONS/ADDITIONS:</b> -		<b>DATE:</b> 1990s <b>SOURCE:</b> Visual	
<b>DESIGNER:</b> —		<b>BUILDER:</b> —	
<b>CRITERIA:</b> III; ArL.		<b>HISTORIC THEME:</b> 2.3	
<b>DESCRIPTION:</b> STYLE: Edwardian. STORIES: 2 DETACHED.			
<b>MATERIALS:</b> WALLS Timber ROOF Iron STRUCTURE 1.b.			
<b>CONDITION:</b> Very good INTACTNESS: Very good. THREATS: -			
<b>SIGNIFICANT INTACT ELEMENTS:</b> FORM. VERANDAH. ROOF FORM. VERANDAH DECORATION. CHIMNEYS. WALL DECORATION. WINDOWS. CONTEXT: Nos 2,3,4,5,6. BELVEDERE.			
<b>SIGNIFICANCE:</b> <b>TYPE:</b> HISTORICAL. ARCHITECTURAL. <b>LEVEL:</b> LOCAL.			
<b>DESIGNATION EXISTING:</b> PLANNING SCHEME.			
<b>RECOMMENDED CONTROL:</b> PLANNING SCHEME.			
<b>GRID REF:</b>	<b>SURVEY:</b> RP	<b>DATE:</b> 27.1.96	<b>NEGS:</b> 2.16 1201.11



Handwritten note: 10

**HISTORY:** Land owned by William Purnell was purchased in 1912 by Henry Ising who built this timber house. Ising, a draper by trade, was still living here in the 1930s.<sup>1</sup>

**VISUAL DESCRIPTION:** A double-fronted, timber, hip-roofed Edwardian house. The left front bay projects as a gable. The upper gable jettys on ogee brackets and is clad in ripple-iron and timbering. Below are mock shingles, a rectangular bay window with a skillion-hood also on ogee brackets and a window-pair with leadlight upper lights. The verandah is around the angle with solid ogee timber brackets and Doric capitals. At the corner is a splayed rectangular bay with a diamond leadlight window-pair.

At right (facing east) is an impressive and virtually intact belvedere, extending from the main roof as a gable. It has a balustrade and verandah as elsewhere, with an arch under. This is over the entry, which has side and fan-lights.

**SIGNIFICANCE:** An Edwardian timber house with a belvedere and attic built in c1912. It is architecturally significant as characteristic of this style and for the belvedere. It is historically significant as an interesting embodiment of life in Newtown in the confident years before the Great War.

**INTACTNESS:** Very good. The mock shingle balustrade may be later. The fence is recent. The chimney has been painted.

**CONDITION:** Very good.

---

<sup>1</sup> City of Newtown and Chilwell Ratebooks.