

NEWTOWN URBAN CONSERVATION STUDY. - 'C' CITATIONS. Ref: 44
Richard Peterson Architect & Conservation Consultant. Daniel Catrice Historian 1996.

NAME: Sayonara

PREVIOUS NAME: —

ADDRESS: 12 Buckland Avenue.

USE: House.

PREVIOUS USE:

CONSTRUCTION DATE: 1912-13

SOURCE: Visual

DESIGNER: —

BUILDER: —

CRITERIA: H1; Ar1.

HISTORIC THEME: 2.3

DESCRIPTION: **STYLE:** Edwardian. **STORIES:** 1 **DETACHED.**

MATERIALS: **WALLS** Timber **ROOF** Iron **STRUCTURE** Stud.

CONDITION: Very good **INTACTNESS:** Very good. **THREATS:** -

SIGNIFICANT INTACT ELEMENTS:

FORM. VERANDAH. ROOF FORM. VERANDAH DECORATION. CHIMNEYS. WINDOWS.
PAINTWORK SCHEME. FENCES/GATES.

SIGNIFICANCE:

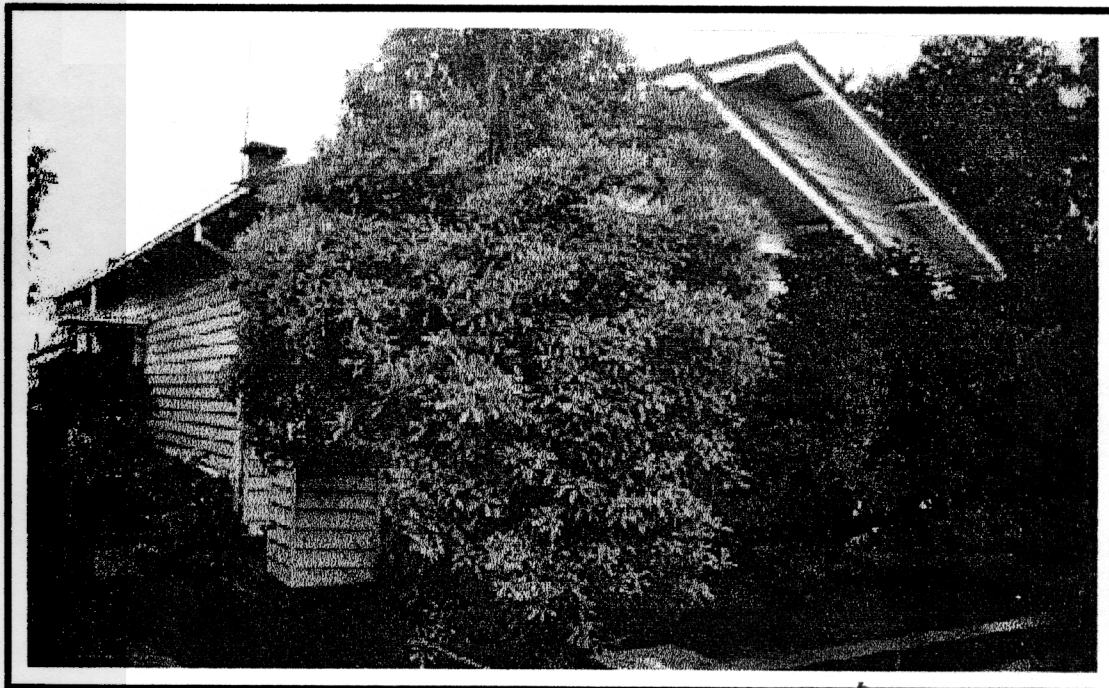
TYPE: HISTORICAL. ARCHITECTURAL.

LEVEL: LOCAL.

DESIGNATION EXISTING: PLANNING SCHEME.

RECOMMENDED CONTROL: PLANNING SCHEME.

GRID REF: **SURVEY:** RP **DATE:** 27.1.96 **NEGS:** 2.19



#15

HISTORY: Phillip Ross Fraser built this weatherboard house in 1912-13. Ross, a solicitor, lived here until the mid-1920s when he sold the house to the Harrison family.¹

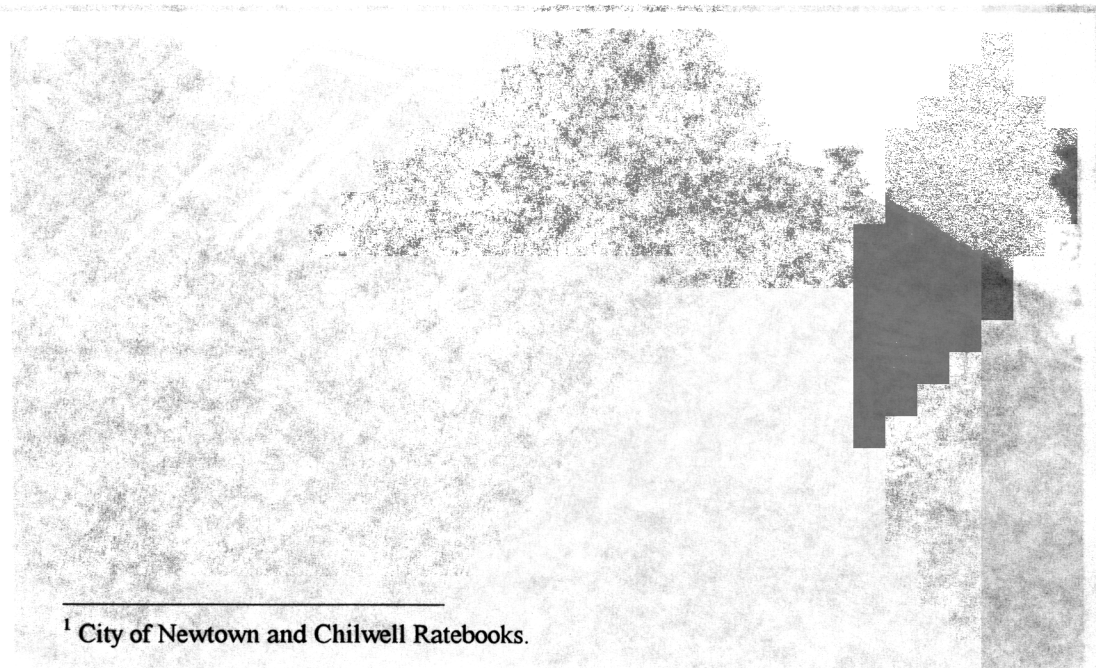
VISUAL DESCRIPTION: A double-fronted, hip-roofed, timber Edwardian house. The left front bay projects as a gable. The upper section, timbered and roughcast, jettys on convex brackets over a rectangular bay window with a hip-roof on fretwork brackets with unusual narrow sashes. At the right side is a further gable within the main roof.

The verandah is under the main roof. There are unusual fretwork brackets, with fleur-de-lis motifs. It extends around the angle, with a splayed rectangular bay at the corner, with leadlight windows and an oculus at front. There is a palisade balustrade, the balusters in triples. The fence and gates are chainlink, with a repoussé copper nameplate on the gate.

SIGNIFICANCE: An elevated timber Edwardian house, built in 1912-13. It is architecturally significant as a characteristic example of this style and for its unusual fleur-de-lis fretwork pattern. It is historically significant as a representative embodiment of life in Newtown early in the 1900s.

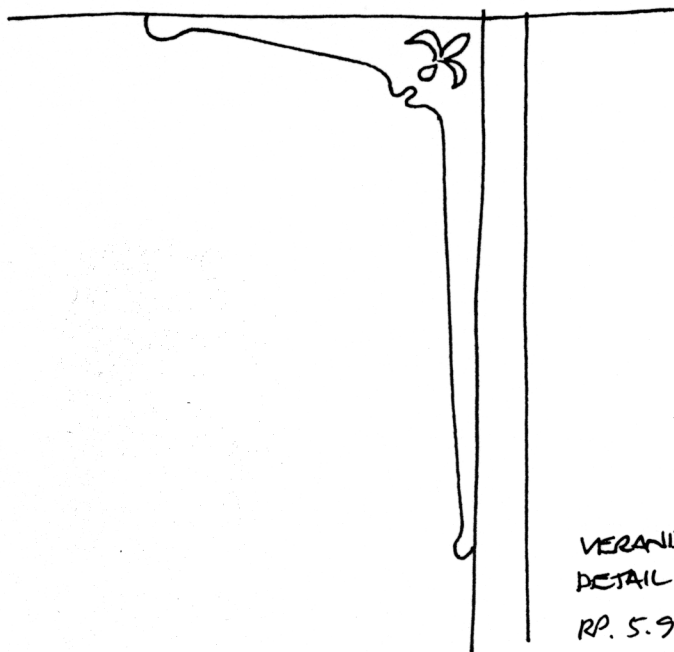
INTACTNESS: Very good. The front verandah sub-floor is clad with brick with concrete steps and wrought-iron handrail.

CONDITION: Very good.



¹ City of Newtown and Chilwell Ratebooks.

44.



VERANDAH
DETAIL.
RP. 5.96. NTS