

NEWTOWN URBAN CONSERVATION STUDY. - 'C' CITATIONS. Ref: 61

Richard Peterson Architect & Conservation Consultant. Daniel Catrice Historian 1996.

NAME: Kanoona

ADDRESS: 42 Buckland Avenue.

USE: House.

CONSTRUCTION DATE: 1890s

SOURCE: Visual.

DESIGNER: —

BUILDER: —

CRITERIA: H1; Ar1.

HISTORIC THEME: 2.3

DESCRIPTION: **STYLE:** Italianate **STORIES:** 1 **DETACHED.**

MATERIALS: **WALLS** Brick **ROOF** Iron **STRUCTURE** Stud.

CONDITION: Excellent. **INTACTNESS:** Good. **THREATS:** -

SIGNIFICANT INTACT ELEMENTS:

FORM. FACADE. VERANDAH? ROOF FORM. EAVES DECORATION. VERANDAH DECORATION? CHIMNEYS. DOORS. WINDOWS. PAINTWORK SCHEME. CONTEXT Nos. 38, 40, etc.

SIGNIFICANCE:

TYPE: HISTORICAL. ARCHITECTURAL.

LEVEL: LOCAL.

DESIGNATION EXISTING: PLANNING SCHEME.

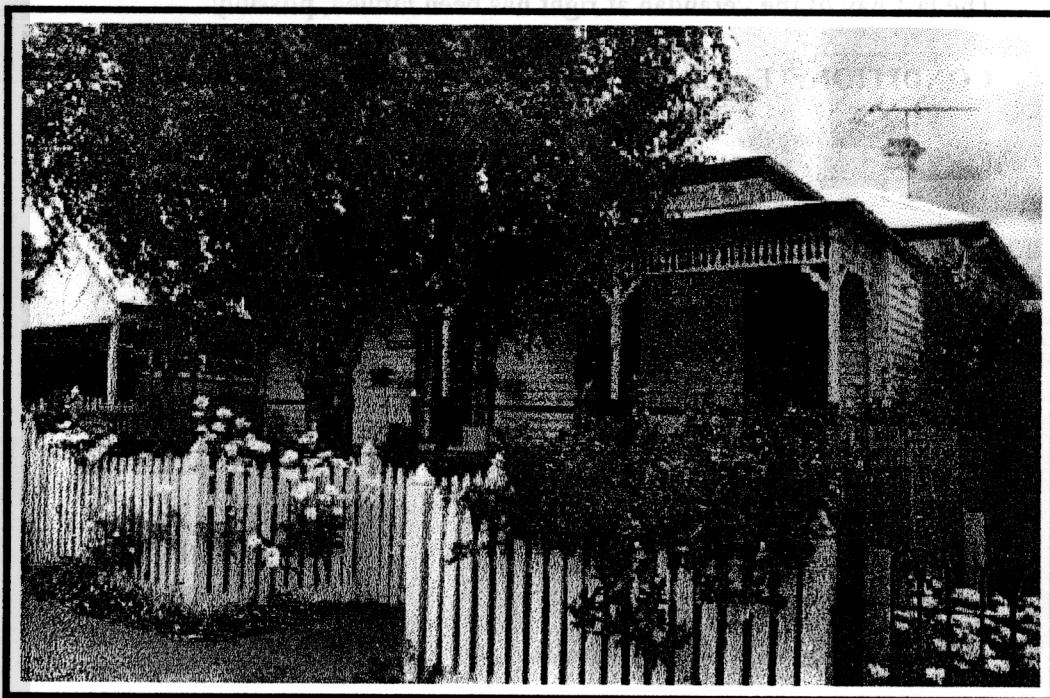
RECOMMENDED CONTROL: PLANNING SCHEME.

GRID REF:

SURVEY: RP

DATE: 27.1.96

NEGS: 3.4



HISTORY: Kanoona was built in the mid-1890s probably for Arthur Charles McKewan. Unlike many of the houses in Buckland Avenue, this house was occupied by tenants rather than owners. Those who called Kanoona home included civil servant William Guy, George Brownhill, grocer Frederick Wood, gardener Thomas Weston and Widow Eliza Smith.¹

VISUAL DESCRIPTION: A four-bay timber, hip-roofed, asymmetrically (but it-line), Italianate house. The entrance is in the second bay, with side and fan-lights. Windows have spandrel panels and the frieze has paired spindle, ogee brackets with panels, over the mould. The verandah has coved brackets, a spindle palisade valence over a rail, bevelled posts and fretwork brackets. It returns to a projecting wing at right. A gablet projects over the entrance with Medievalising timbers, set forward, supported by ogee and C-shaped brackets. There is a nameplate. Chimneys have deep frieze moulds and brackets. The catenary curved picket fence has moulded post caps, spearheads and pedestrian gate recess.

SIGNIFICANCE: Kanoona is a brick Italianate house built in the mid-1890s. It is architecturally significant locally as characteristic of this domestic style, including fence and gates. It is historically significant as the physical embodiment of the comfortable family life of the confident 1880s.

INTACTNESS: Good. Leadlighting and flyscreen door are recent. The verandah may also have been altered, or at least be later than the house. Chimneys have been painted. The last bay of the verandah at right has been infilled, possibly.

CONDITION: Excellent.

¹ City of Newtown and Chilwell Ratebooks.