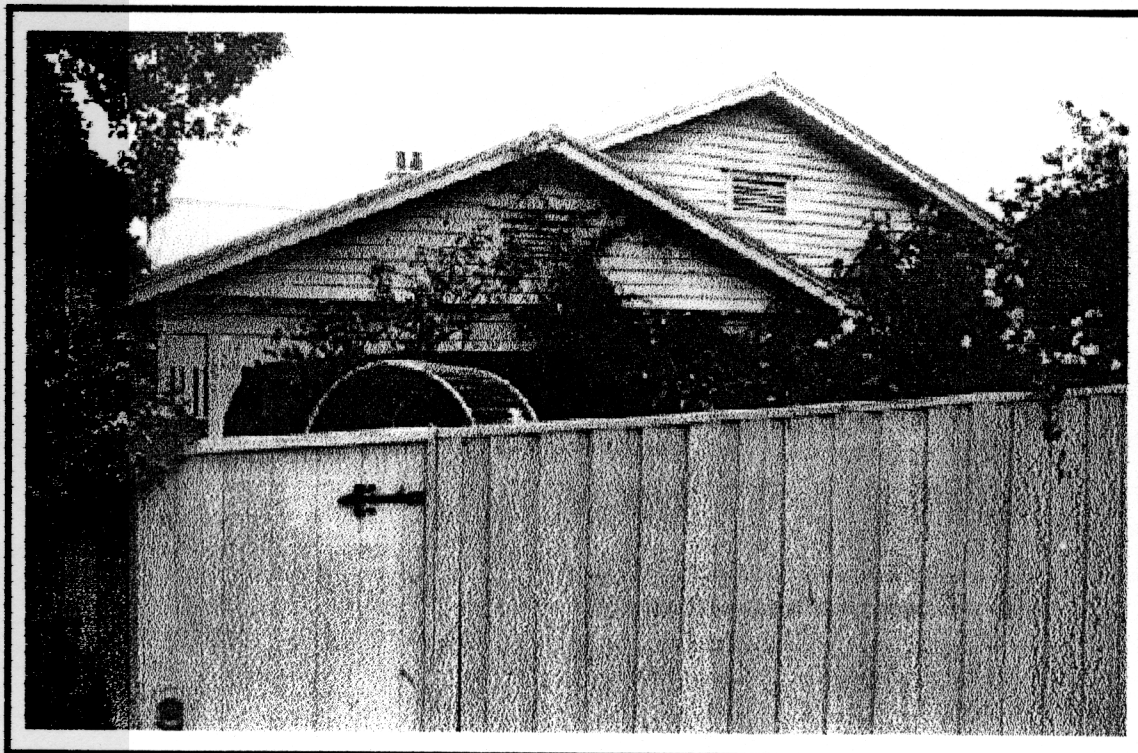


**NEWTOWN URBAN CONSERVATION STUDY. - 'C' CITATIONS. Ref: 48**  
Richard Peterson Architect & Conservation Consultant. Daniel Catrice Historian 1996.

<b>NAME:</b> —			
<b>ADDRESS:</b> 17 Buckland Avenue.			
<b>USE:</b> House.			
<b>CONSTRUCTION DATE:</b> 1923		<b>SOURCE:</b> Visual & 1	
<b>DESIGNER:</b> —		<b>BUILDER:</b> —	
<b>CRITERIA:</b> H1; Ar1		<b>HISTORIC THEME:</b> 2.3	
<b>DESCRIPTION:</b> <b>STYLE:</b> Bungalow <b>STORIES:</b> 1 <b>DETACHED.</b>			
<b>MATERIALS:</b> <b>WALLS</b> Timber <b>ROOF</b> Iron <b>STRUCTURE</b> Stud.			
<b>CONDITION:</b> Very good <b>INTACTNESS:</b> Very good. <b>THREATS:</b> -			
<b>SIGNIFICANT INTACT ELEMENTS:</b> FORM. VERANDAH. ROOF FORM. GABLE DECORATION. VERANDAH DECORATION. CHIMNEY. WINDOWS. CONTEXT Nos. 13, 15, 17A, etc.			
<b>SIGNIFICANCE:</b> <b>TYPE:</b> HISTORICAL. ARCHITECTURAL. <b>LEVEL:</b> LOCAL.			
<b>DESIGNATION EXISTING:</b> PLANNING SCHEME.			
<b>RECOMMENDED CONTROL:</b> PLANNING SCHEME.			
<b>GRID REF:</b>	<b>SURVEY:</b> RP	<b>DATE:</b> 27.1.96	<b>NEGS:</b> 2.25



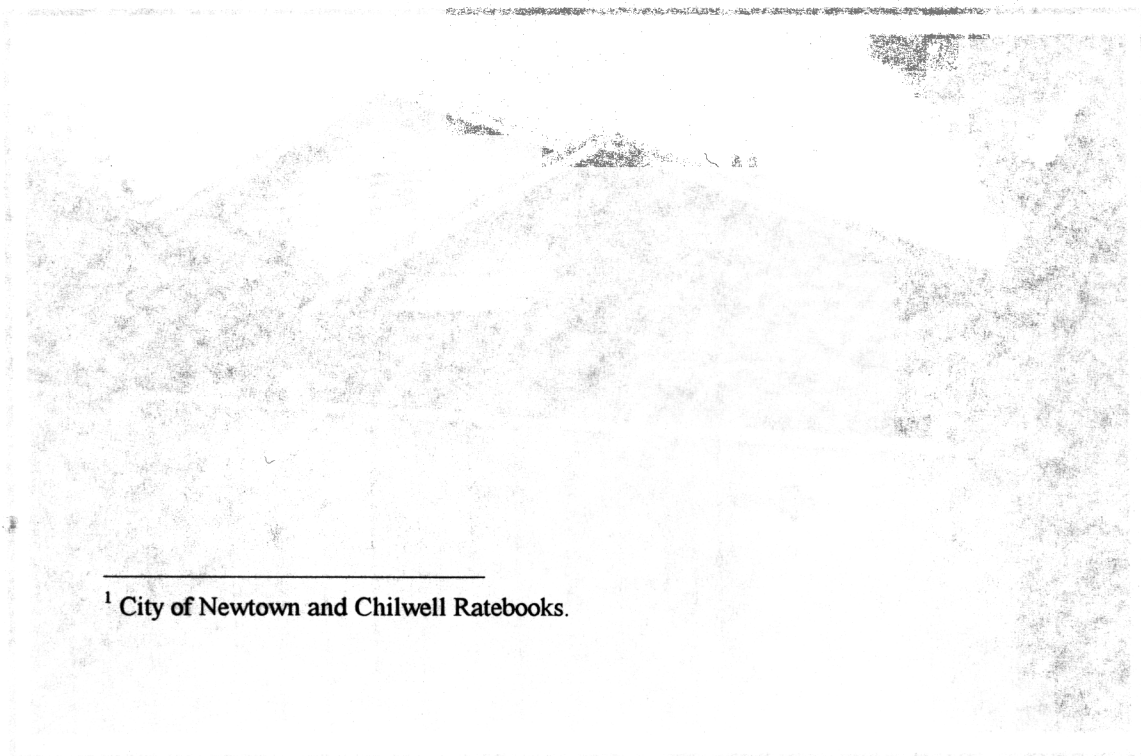
**HISTORY:** This house was erected in 1923 for Florence Mann.<sup>1</sup>

**VISUAL DESCRIPTION:** A simple, double-fronted timber Californian Bungalow, with a broad gable across. A major gable projects forward at right and minor gables at left, over the verandah. These jetty on joists, with rectangular louvred vents. The verandah has decorative fretwork brackets, on post-piers over. There is a canted bay window.

**SIGNIFICANCE:** A timber Californian Bungalow built in 1923. It is architecturally significant as characteristic of this style and historically significant as the representative embodiment of life in 1920s Newtown.

**INTACTNESS:** Very good. The high timber fence is not appropriate.

**CONDITION:** Very good.



<sup>1</sup> City of Newtown and Chilwell Ratebooks.