

**NEWTOWN URBAN CONSERVATION STUDY. - 'C' CITATIONS. Ref: 36**

Richard Peterson Architect & Conservation Consultant. Daniel Catrice Historian 1996.

**NAME:** —

**ADDRESS:** 1 Buckland Avenue.

**USE:** House.

**SIGNIFICANT DATE:** **CONSTRUCTION DATE:** c1890 **SOURCE:** 1

**DESIGNER:** — **BUILDER:** —

**CRITERIA:** H1; Ar1, **HISTORIC THEME:** 2.3

**DESCRIPTION:** **STYLE:** Early Italianate **STORIES:** 1 **DETACHED.**

**MATERIALS:** **WALLS** Timber **ROOF** Iron **STRUCTURE** Stud.

**CONDITION:** Excellent. **INTACTNESS:** Good. **THREATS:** -

**SIGNIFICANT INTACT ELEMENTS:**

FORM. FACADE. VERANDAH. ROOF FORM. EAVES DECORATION. VERANDAH  
DECORATION. CHIMNEYS. DOOR. WINDOWS.

**SIGNIFICANCE:**

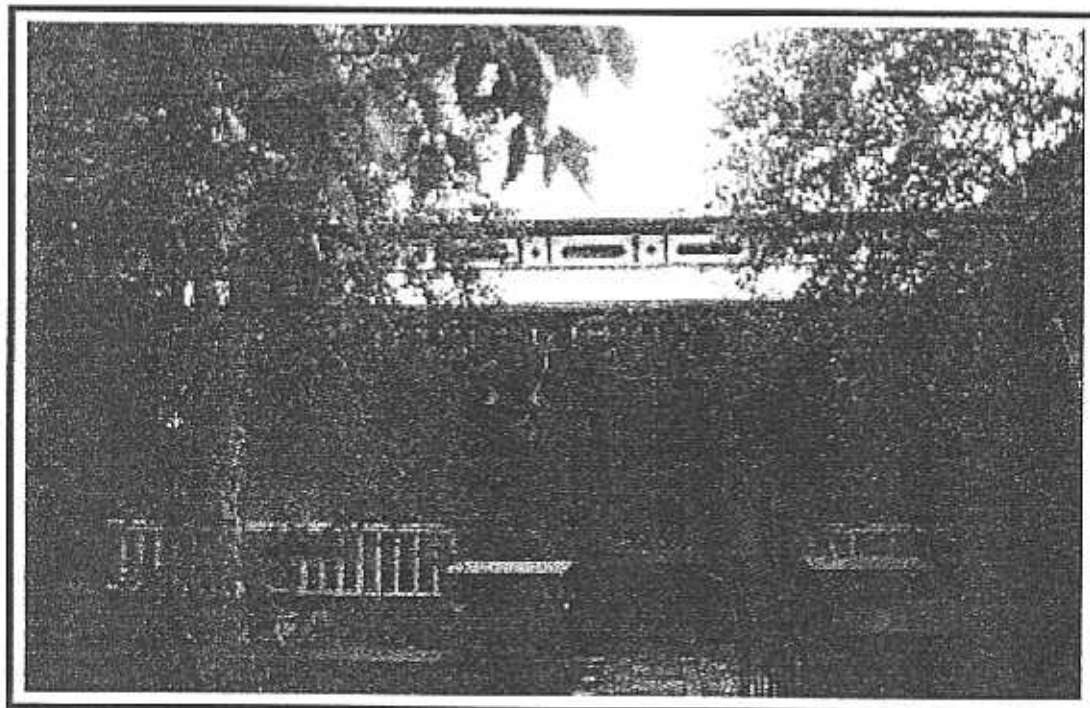
**TYPE:** HISTORICAL. ARCHITECTURAL.

**LEVEL:** LOCAL.

**DESIGNATION EXISTING:** PLANNING SCHEME. AREA.

**RECOMMENDED CONTROL:** PLANNING SCHEME. AREA.

**GRID REF:** **SURVEY:** RP **DATE:** 26.1.96 **NEGS:** 2.10



**HISTORY:** This timber house was built c1890 for woolscourer, Edward Gibson.<sup>1</sup>

**VISUAL DESCRIPTION:** A symmetrical double-fronted timber early Italianate house, with a hip-roof. The frieze has bracket pairs with lozenges and panels between. The bull-nosed hip-verandah has a valence with turned spindles on turned posts. Chimneys have pots decorated with Art Nouveau plant forms.

**SIGNIFICANCE:** An early Italianate timber house built in 1890, probably with Edwardian alterations. It is architecturally significant locally as characteristic of this early style and historically significant as a representative embodiment of life in Newtown in the 1890s.

**INTACTNESS:** Good. The balustrade has been added and the verandah floor replaced with a tiled concrete slab, impeding sub floor ventilation and potentially causing springy floors. The flyscreen door is recent and the fence is from the 1950s. Possibly, the entire verandah is recent.

**CONDITION:** Excellent.

---

<sup>1</sup> City of Newtown and Chiswell Ratebooks.