

HISTORIC PLACES DOCUMENTATION SHEET

Geelong Regional Commission  
Sheet 13

PLACE NAME: OLD FYANSFORD BRIDGE  
LOCAL GOVERNMENT AREA SHIRE OF BANNOCKBURN

ARCHITECTURAL HISTORY (References)

STYLE OR PERIOD: Industrial/Engineering Structure  
ARCHITECT(S)/DESIGN ORIGIN: Monash & Anderson Engineers  
Reference: Also, P.F.  
Unpublished research on National Trust File. No. 2841.  
BUILDER: Monash and Anderson, Engineers.  
Reference:

PRINCIPAL ARTISANS/ARTISTS/TRADES A.L. Campbell, C.E.  
Reference: Also, P.F.  
Superintending Engineer.

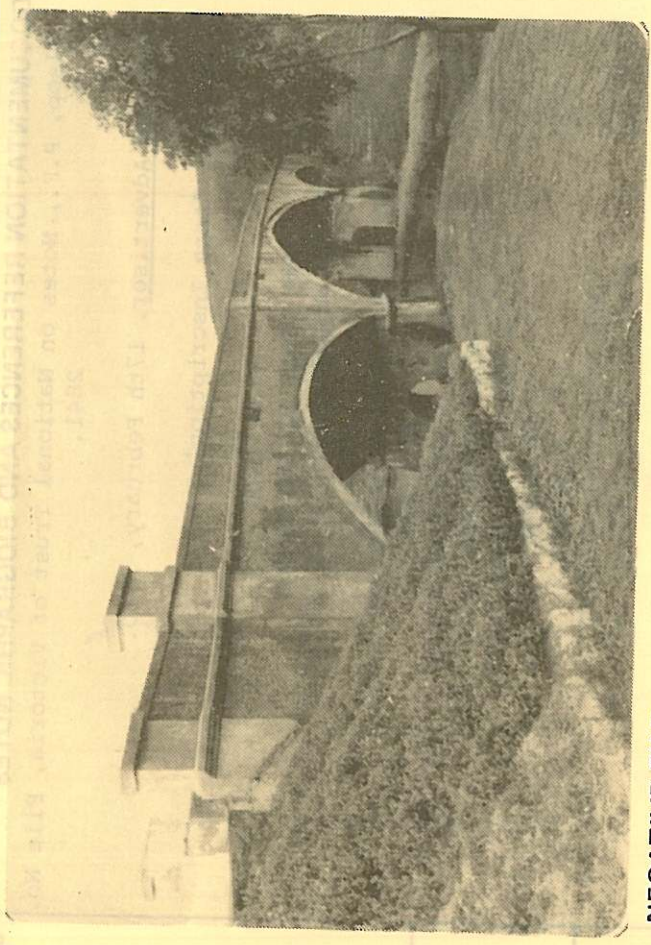
TENDER NOTICE: Unpublished research on National Trust File. No. 2841  
Reference:

DATE(S) OF CONSTRUCTION Contract Signed March 1899  
Reference: Contract Completed Feb. 1900  
Also, P.F. Tested 16th Feb. 1900  
ESTIMATE/CONTRACT VALUE £4506/12/0  
Amount received for extras £1902/10/0 after court settlement Also, P.F.

SUBSEQUENT WORKS/ALTERATIONS/ADDITIONS Unpublished research on National Trust File No. 2841  
Superceded 1970 by new bridge which by-passes the old bridge.

ORIGINAL OWNER(S)/OCCUPANT(S) Shires of Bannockburn and Corio.  
SUBSEQUENT SIGNIFICANT OWNERS/OCCUPANTS

OTHER NOTES First reinforced concrete arch bridge available for use in Victoria.



NEGATIVE FILE:

Australian Heritage Commission Register of National Estate  
 National Trust of Aust. (Vic) Classified/Recorded File No. ....2841.....  
 Historic Buildings Preservation Council Register No. ....  
File No. ....  
 Geelong Regional Commission Register No. ....88.....

IDENTIFICATION DATA

PLACE NAME Old Fyansford Bridge,  
ADDRESS Over Moorabool River on Hamilton Highway,  
Fyansford

LOCAL GOVERNMENT AREA Shire of Bannockburn  
TITLE INFORMATION

MAP REFERENCE

PRESENT USE Unused  
PRESENT OWNER/LESSEE Road Construction Authority,  
ADDRESS 60 Denmark Street,  
Kew, Victoria. TELEPHONE(03) 8615321

PLACE NAME OLD FYANSFORD BRIDGE  
LOCAL GOVERNMENT AREA SHIRE OF BANNOCKBURN

**DOCUMENTATION REFERENCES AND BIOGRAPHIC NOTES**

Alsop, P.F., Notes on National Trust of Victoria, File No. 2841.

Geelong Advertiser, 17th February, 1900.

'Memorial Stone Inscription'

A.D. 1900

THE FIRST MONIER BRIDGE  
IN THE WESTERN DISTRICT OF VICTORIA  
FOR

THE SHIRDS OF BANNOCKBURN AND CORIO  
W.H. JONES,

PRESIDENT, BANNOCKBURN SHIRE  
JAMES CAMPBELL, PRESIDENT CORIO SHIRE  
SAMUEL MORRIS AND JAMES BLAIR,

SECRETARIES  
A.L. CAMPBELL,

SUPERINTENDING ENGINEERS

ERECTED BY MONIASH AND ANDERSON

**CITATION**

The Fyansford Bridge, erected in 1899 and opened for traffic in February 1900, is the first bridge in Victoria completed using the new reinforced concrete technique developed in Europe and known as the 'Monier' principle. Sydney engineers Gumnow and Carter introduced the system to Australia and leading Victoria engineers John Monash and J.T.N. Anderson pioneered this work in Victoria. The Fyansford Bridge is of paramount importance to this history of technology in Australia with finely defined proportions over the three spans of arches contributing to its notable aesthetic qualities.

**SIGNIFICANCE OF PLACE**

- Its creative and/or technical accomplishment.
- Its demonstration of a way of life, custom, process or function no longer practised, in danger of being lost or of exceptional interest.
- Its strong association with an important figure or figures, development, or cultural phase.
- Its townscape and/or landscape value.
- Its scarcity value.

**SIGNIFICANCE**

- LOCAL
- REGIONAL
- STATE
- NATIONAL
- WORLD

**CONDITION**

- EXCELLENT
- GOOD
- FAIR
- DETERIORATED
- RUINS

**INTEGRITY**

- HIGH
- LOW
- ALTERED
- DAMAGED

**RECOMMENDATIONS: PROTECTIVE MEASURES**

Geelong Regional Commission Register  
Historic Buildings Council Register  
Australian Heritage Commission Register of the National Estate.

**DOCUMENTATION**

Allan Willingham, Architect, 151 McKean St.,  
North Fitzroy. 3068. Tel: 03 489 8492.

**SIGNATURE**

**DATE**



old Fyansford Bridge - Over Moorabool River, Hamilton Hwy, Fyansford

