

Historical archaeological site card

Heritage Inventory number and name

MORDIALLOC HIGH SCHOOL CARETAKER'S COTTAGE
H7921-0137

Date received

Friday, 28 June 2024

Date accepted

10/7/2024

Hermes Number

212237

1. Place details

Place name:

MORDIALLOC HIGH SCHOOL CARETAKER'S COTTAGE

Heritage Inventory Number (if any):

Other or former names:

Mordialloc-Carrum High School Caretaker's Cottage; Mordialloc-Chelsea High School Caretaker's Cottage; Former Mordilloc College Caretaker's Cottage

Municipal Council:

KINGSTON CITY

Address:

1 STATION STREET, ASPENDALE

Geographical coordinates (GDA94 or WGS84)
expressed in degrees and decimals of a degree:

Mapsheet name and number (1:100,000 only):

Cranbourne 7921-N

2. Cadastral location

County:	Mordialloc
Parish:	Lyndhurst
Township:	Lyndhurst
Section:	
Allotment:	2223; 2224; 15E (site extent goes over 3 property parcels)
Standard Parcel Identifier (SPI):	2223\PP3025; 2224\PP3025; 15E\PP3025

3. Details of site owner or land manager (where known)

First Name: _____

Surname: _____

Business or organisation name: _____

Position title: _____

Address: _____

Email address: _____

Telephone: _____

4. Details of site occupier (where known)

First Name: _____

Surname: _____

Business or organisation name: _____

Position title: _____

Address: _____

Email address: _____

Telephone: _____

5. Aboriginal cultural values

Site has known Aboriginal values	YES
Site is recorded on the Victorian Aboriginal Heritage Register	YES

6. Current description of site

Please provide description:

The former caretaker's cottage of the Mordialloc High School was located immediately east of the Frankston railway line and north of Station Street, Aspendale (Figure 1). It is located approximately 16m from the southern bank of the Mordialloc Creek (Figure 2).

The caretaker's cottage building appeared on archival aerial photographs from 1931; in the 1931 aerial photograph the building was a rectangular structure with a small verandah or porch on the north side and possibly on the south side as well, and a small outbuilding was located to the rear/north (Figure 16). The 1945 aerial photograph also shows the same cottage building but with a two small outbuildings to the north (Figure 17). The cottage and outbuildings are still visible on archival aerial photos from 1931 up until 1977, although the cottage may have been standing until c.1991 based on low-resolution aerial photograph. (Figure 18, Figure 19, Figure 20)

The site is currently vacant, covered with trees and grass and is used for storing landscaping and buildings materials as well as spoil or landscaping waste for the High School (Figure 2, Figure 14, Figure 15).

The footprints of the cottage and outbuildings and an enclosing fence have been drawn from the 1945 aerial photograph and have been shown on the VHI site extent plan (Figure 2). The VHI site extent has been drawn based on the outline of the cottage fenceline as shown on the 1945 aerial photograph.

The area is currently zoned as public use zone – education associated with the Mordialloc-Chelsea High School (now known as Mordialloc College).

Date recorded: Thursday, 11 January 2024

On Victorian Heritage Register

On Heritage Overlay

Associated sites: VAHR 7922-1446

7. Place history

Please provide a brief history of the place (at least 1 to 2 paragraphs):

The site was originally bushland on the southern bank of the Moonee Ponds Creek, and from 1841 was part of the Mordialloc Aboriginal Reserve. The landform at this location is a modified inland dune. This location was favourite summer camp of the Bunurong/Boon wurrung people where they fished and hunted (Barnard 2008). The Mordialloc Aboriginal Reserve was established in 1841 and was later revoked in 1863; however, the reserve remained in use until 1878. The area was known as a good place to catch eel and other water-based resources. Jimmy, Eliza and Nancy Dunbar are noted to have lived on the reserve, who were possibly the last full-blood Bunurong people. Eliza died in the reserve in 1877, with Jimmy's passing occurring six days later in the Alfred Hospital. (Sheehy 1970)

From 1861 until c.1871, the land on the southern bank of the Mordialloc Creek was used as Moorabbin-Mordialloc Farmers Grazing Common, on the southern side of the creek. The Farmers Common was established to allow local farmers to graze their cattle and sheep on this area when their pastures were very dry or drought-affected. The Farmers' Common was opened up for selection and broken up into private property parcel from 1871. (Barnard 2008; Whitehead 2018a; 2021).

Early parish plans from 1876 to 1890 indicate that the allotment was gazetted for public use within Attenborough Park, with a second undated parish plan showing the lot as zoned for a High School (Figure 3; Figure 4). Indeed, an early recommendation to the council suggested that Attenborough Park be offered to the Education Department as a site for the proposed Mordialloc High School. Local council, Education Department and state ministerial representatives visited the site to investigate this proposal in 1923 (Whitehead 2018b; Figure 5).

The push for a high school originated partly from the desire to commemorate the sacrifices of World War I and to address the evolving educational needs of the community. While early proposals included a technical school, the focus shifted towards establishing a comprehensive high school. Despite setbacks and disagreements over funding and site selection, the determination of local leaders and residents prevailed (Whitehead and Gamble 2014). (See Figure 5 and Figure 6 early photographs of the site of the High School and the Caretaker's Cottage.)

In February 1924, Mordialloc-Chelsea High School, then named Mordialloc-Carrum High School, officially opened its doors in temporary accommodations, with Mr. E. Brine serving as the temporary headmaster. The initial establishment faced challenges, including financial demands and inadequate facilities (Whitehead and Gamble 2014). By late 1927, construction began on a purpose-built school building. The official opening in March 1928 was attended by dignitaries, including the Minister of Education J. Lemmon, and community members. In 1929 its name was changed to Mordialloc-Chelsea High School when the Borough of Carrum became the City of Chelsea (Whitehead and Gamble 2014).

Plans for a caretaker's cottage for the Mordialloc-Chelsea High School were made in 1927-1928, and the cottage was built in 1929 (Figure 7; PROV VPRS 3686, 1928; Whitehead 2018b). The plans show a one storey-building with two sizeable bedrooms, a living room, kitchen and pantry, bathroom, as well as two veranda's at the front and rear of the property. The plans were signed by the Chief Architect of the Victorian Public Works Department, E. Evan Smith, and dated 29 September 1927. (PROV VPRS 3686; Figure 7, Figure 8, Figure 9, Figure 10).

Entries in the 1930 and 1935 Sands and McDougall Directories list "W.M.P. Barker" as the caretaker of the Mordialloc-Carrum High School, situated on Main Street near the Mordialloc Creek reserve and Railway (Sands & McDougall Directory, 1930-1935, State Library of Victoria). William Palmerston Barker, a Mordialloc resident and former A.I.F. corporal, No.2 Section, Railway Unit, occupied the position of caretaker from c.1929 to 1941 (Age, 16 December 1941, p.1). Barker was born in Victoria on 22 November 1890. He worked as a fireman in South Yarra until he enlisted in 1917 with the Australian Armed Forces as a locomotive fireman for the Railway Unit (Figure 12, Figure 13; Australian War Memorial 2024; Virtual War Memorial 2024). In November 1917, Barker was medically discharged after falling from a moving train and breaking his leg in five places (Australian War Memorial 2024; Virtual War Memorial 2024).

In May 1945, J. Plier, a Mordialloc resident and returned soldier was appointed as the new caretaker at Mordialloc-Chelsea High School (Argus, 2 May 1945, p. 15).

The Mordialloc-Carrum High School Caretakers Cottage remained visible on archival aerial photos from 1931 until at least 1977 (Figure 16, Figure 17, Figure 18, Figure 19, Figure 20, Figure 21, Figure 22). Satellite imagery from April 2006 shows that the cottage and outbuildings had definitely been removed by that date.

8. Analysis of site (interpretation)

Include phases in the development of the site, functions and activities represented, as well as current place use:

The architectural plans for the cottage provide good information about its design and type of construction (Department of Public Works 1927; Figure 7). The house has two bedrooms at the front (southern side) with a central hallway and front verandah. A small bathroom was located in the middle of the cottage, on the east side, containing a bath and small basin only. At the rear (north side) was a living room and kitchen, with a small pantry off the kitchen. A single chimney was present between the living room and kitchen with two fireplaces, one facing into each of these rooms. At the rear (north) end of the house was another small verandah and rear external door providing access to the rear garden and Mordialloc Creek. One of the outbuildings shown on the 1931 and 1945 aerial photographs must have been a toilet as the original cottage plan the bathroom did not include a toilet.

The plans show that the cottage was timber stud framed and clad in timber weatherboards. The front (southern) and side (east and west) elevation drawings show that the upper section of the external walls was clad with what appears to have been rough-cast plaster, while the rear (northern) external wall was only weatherboard. The doors and windows and verandahs were made of timber also. The roof was hipped and steeply sloping. The roofing materials are not indicated on the plans but were likely to have been corrugated steel sheeting or possibly terracotta tiles. A single chimney is shown at the rear of the house.

Historical archaeological site card

These plans indicate that the archaeological remains likely to have been present at the site would include timber stump/post holes, remains of the brick chimney and fireplace, a cesspit or toilet building (timber stumps) and the remains of garden features such as a front and rear paths and fencing.

The cottage remained visible on aerial imagery from 1931 up to and including 1977 (Figure 16 to Figure 21). It is possible that over this time, the residence had been renovated and modernised although the footprint of the building appears to be essentially unchanged, except at the northern end where the rear verandah may have been replaced with a lean-to addition. An additional shed and fence had been erected on the site by the 1960s (Figure 19, Figure 20). Through a review of available Google Earth imagery from 2000 to the present, it appears that definitely by 2006, the structure had been demolished, and no further construction occurred on the site in the following decades.

A review of aerial imagery from Nearmap from November 2009 to the present, demonstrated that the location of the former cottage was used to store spoil mounds as well as waste and landscaping materials. This indicates that there has likely been deposition across the site and possibly levelling of the introduced material, rather than disturbance or stripping of the site (Figure 22, Figure 23, Figure 24, Figure 25, Figure 26). The spoil mounds can still be seen in aerial imagery from 2018 until April 2023 (Figure 24, Figure 25, Figure 26); however, the August 2023 imagery indicates that the spoil mounds have been removed or reduced and spoil spread around the site (Figure 26).

The amount of ground disturbance that has occurred across the site remains to be confirmed, although an archaeological survey undertaken in 2023 passed beside the site along the public footpath along the western side of the site (the Caretaker's Cottage itself was not included in the survey area). The site was open with trees and large bushes around the western, northern and eastern perimeters. The open ground in the centre was partially covered in grass and the remainder was earth with numerous vehicle tracks (Figure 14, Figure 15). This brief inspection of the site suggests that the spoil mounds have been removed, but that no substantial ground disturbance may have occurred. The preliminary assessment of the current condition of the site, the review of archival aerial imagery and the lack of redevelopment of the site is that there is potential for some archaeological features, deposits and possible artefacts to be present below the current ground surface.

9. Statement of Significance

What is significant?

Archaeological features and deposits and /or artefacts associated with the former Caretaker's Cottage. While surface features associated with the historical fabric of the Caretaker's Cottage have been removed, subsurface components exceeding 75 years old are potentially present below the ground surface. The site dates from c. 1928, and is shown on archival photographs from the 1930s until at least the late 1970s. The exact demolition date is uncertain, but the cottage and its outbuildings were removed by 2006, based on satellite imagery. Although the

Historical archaeological site card

cottage was built of timber, there could be archaeological features and deposits associated with brick chimney and fireplaces, timber floor and wall stumps, postholes, a cesspit, refuse pits and possibly artefacts.

How is it significant?

The Mordialloc High School Caretaker's Cottage is historically and archaeologically significant to the state of Victoria. The Caretaker's Cottage was constructed in 1929 (Whitehead 2018b). Although there are numerous school sites from suburban Melbourne registered on the Victorian Heritage Register (VHR), such as H1641 MacRobertson Girls' High School in Melbourne, H2183 University High School in Parkville, and H1636 Melbourne High School in South Yarra, school sites in general are not well-represented on the Victorian Heritage Inventory (VHI). Caretakers' cottages have a similar representation on the state heritage lists, with numerous standing buildings associated with public institutions included on the VHR and National Trust lists. There are only a few caretakers' cottages listed on the VHI, including H7922-0466 Maroondah Aqueduct former Caretakers Hut in the Yarra Ranges, and H7922-0490 Former Preston Reservoir Caretaker's House Cellar in Reservoir. Neither of these sites are associated with schools. As such, the Mordialloc High School Caretaker's Cottage is unique as there do not appear to be other such sites listed in the Victorian Heritage Database and inventory.

Why is it significant?

The Mordialloc High School Caretaker's Cottage is associated with the construction of employee housing and the development of the education system in Mordialloc in the early 20th century. The site is over 75 years in age and has significance within the Mordialloc community, being an early residence associated with the development of the Mordialloc-Chelsea High School. This relates to the themes of Educating People (8.2) and Making homes for Victorians (6.7) as set out in Victoria's Framework of Historical Themes.

10. Suggested Protection : Heritage Inventory

11. Threat

Is the place under any threat? If so, what is the threat?

The place is potentially under threat from construction works, infrastructure project works and services installations.

12. References / Informants

Please list books or other sources that may provide historical information about this place.

References

Barnard, J. 2008. 'Mordialloc'. eMelbourne website, School of Historical & Philosophical Studies, University of Melbourne. Accessed 5 May 2024. <https://www.emelbourne.net.au/biogs/EM01008b.htm>

Australian War Memorial. William Palmerston Barker. Accessed 07 March 2024. <https://www.awm.gov.au/collection/P11233.003>.

Sands and McDougall Directory. 1930. State Library of Victoria. https://find.slv.vic.gov.au/permalink/61SLV_INST/1dukq3j/alma9939654171607636.

Sands and McDougall Directory. 1935. State Library of Victoria. https://find.slv.vic.gov.au/permalink/61SLV_INST/1dukq3j/alma9939663928207636.

Virtual War Memorial Australia. William Palmerston Barker. Accessed 07 March 2024. Virtual War Memorial | William Palmerston BARKER (vwma.org.au)

Whitehead, G.J. 2018a. 'The Selling the Farmers' Common'. Kingston Local History website Accessed 07 May 2024. <https://localhistory.kingston.vic.gov.au/articles/210>

Whitehead, G.J. 2018b. 'The Beginnings of the Mordialloc-Chelsea High School.' Kingston Local History website. Accessed 07 March 2024. <https://localhistory.kingston.vic.gov.au/articles/400>.

Whitehead. G. J. 2021. 'Moorabbin-Mordialloc Farmers Common – Conflict.' Kingston Local History website. Accessed 15 May 2024. <https://localhistory.kingston.vic.gov.au/articles/705>

Whitehead, G.J. and L. Gamble. *By The Creek: A Mordialloc History*. 2014. City of Kingston, National Library of Australia.

Newspapers and Articles

The Age. 16 December 1941, p.1. Accessed via Trove 07 March 2024, <https://trove.nla.gov.au/newspaper/article/209811471?searchTerm=%22William%20Palmerston%20Barker%22>.

The Argus. 2 May 1945, p. 15. Accessed via Trove 07 March 2024, <https://trove.nla.gov.au/newspaper/article/1107978?searchTerm=%22Mordialloc-Chelsea%20High%20school%22%20AND%20%22caretaker%22>.

The Herald. 23 May 1939, p. 2. Accessed via Trove 07 March 2024, <https://trove.nla.gov.au/newspaper/article/243369603?searchTerm=%22William%20Palmerston%20Barker%22>.

The Sun. 23 May 1939, p. 6. Accessed via Trove 07 March 2024, <https://trove.nla.gov.au/newspaper/article/230893391?searchTerm=%22William%20Palmerston%20Barker%22>.

The Sun. 16 December 1941, p. 13. Accessed via Trove 07 March 2024, <https://trove.nla.gov.au/newspaper/article/278510973?searchTerm=%22William%20Palmerston%20Barker%22>.

Maps and Images

Department of Crown Lands and Survey. 1876-1890. Lyndhurst. Parish plan. Public Records Office Victoria, VPRS 8168/P0002, PROCL20. <https://prov.vic.gov.au/archive/B3C218EB-F843-11E9-AE98-4D0D5FD982AC?image=1>

Department of Lands and Survey. 1959. Lyndhurst. Sheet 2. Parish plan. Public Records Office Victoria (PROV). VPRS 16171/P0001/6, Lyndhurst-2(Psh)LOImpL3025-2.pdf, n.d. Accessed 5 June 2023. <https://prov.vic.gov.au/archive/25BD938F-F40B-11EA-BE8C-C91E1391571D>

Department of Public Works. 1927. Mordialloc High School No. 8075; Caretaker's Cottage. Public Records Office Victoria. VPRS 3686. <https://prov.vic.gov.au/archive/32816A81-F92C-11E9-AE98-D33B1FF4F77E>.

LANDATA. 1931. Maldon Prison (no. 1931). Film Number 64. Run 28. Frame 2435. Photograph taken 11/1931.

LANDATA. 1945. Melbourne and Metropolitan Area Project (no. 5). Film Number 252. Run 8. Frame 64831. Photograph taken 12/1945.

LANDATA. 1957. Metropolitan Base Map Project (no. 270). Film Number 977. Run 18. Frame 4. Photograph taken 12/1957.

LANDATA. 1963. Melbourne (1963) Project (no. 486). Film Number 1815. Run 26. Frame 101. Photograph taken 04/1963.

LANDATA. 1977. Western Port Foreshores (no. 1716). Film Number 3217. Run 1. Frame 260. Photograph taken 12/1977.

13. Attachments

- Site card supporting documents-1 MN.pdf
- Site card supporting documents-2 MN.jpg
- Site card supporting documents-3 MN.jpg
- Site card supporting documents-4 MN.jpg
- Site card supporting documents-5 MN.jpg
- Site card supporting documents-6 MN.jpg
- Site card supporting documents-7 MN.jpg
- Site card supporting documents-8 MN.jpg

Historical archaeological site card

- Site card supporting documents-9 MN.jpg
- Site card supporting documents-10 MN.jpg
- Site card supporting documents-11 MN.jpg
- Site card supporting documents-12 MN.jpg
- Site card supporting documents-13 MN.jpg
- Site card supporting documents-14 MN.jpg
- Site card supporting documents-15 MN.jpg

14. Recording archaeologist's details

First Name:	Michelle	
Surname:	Negus Cleary	
Business or organisation name:	Dr Vincent Clark Archaeology & Heritage	
Position title:		
Business or company address:	PO Box 266 Coburg VIC 3058, Coburg VIC 3058	
Email address:		
Telephone:	9386 4770	0407 261 133

15. Declaration

I state that the information I have given on this form is correct to the best of my knowledge.



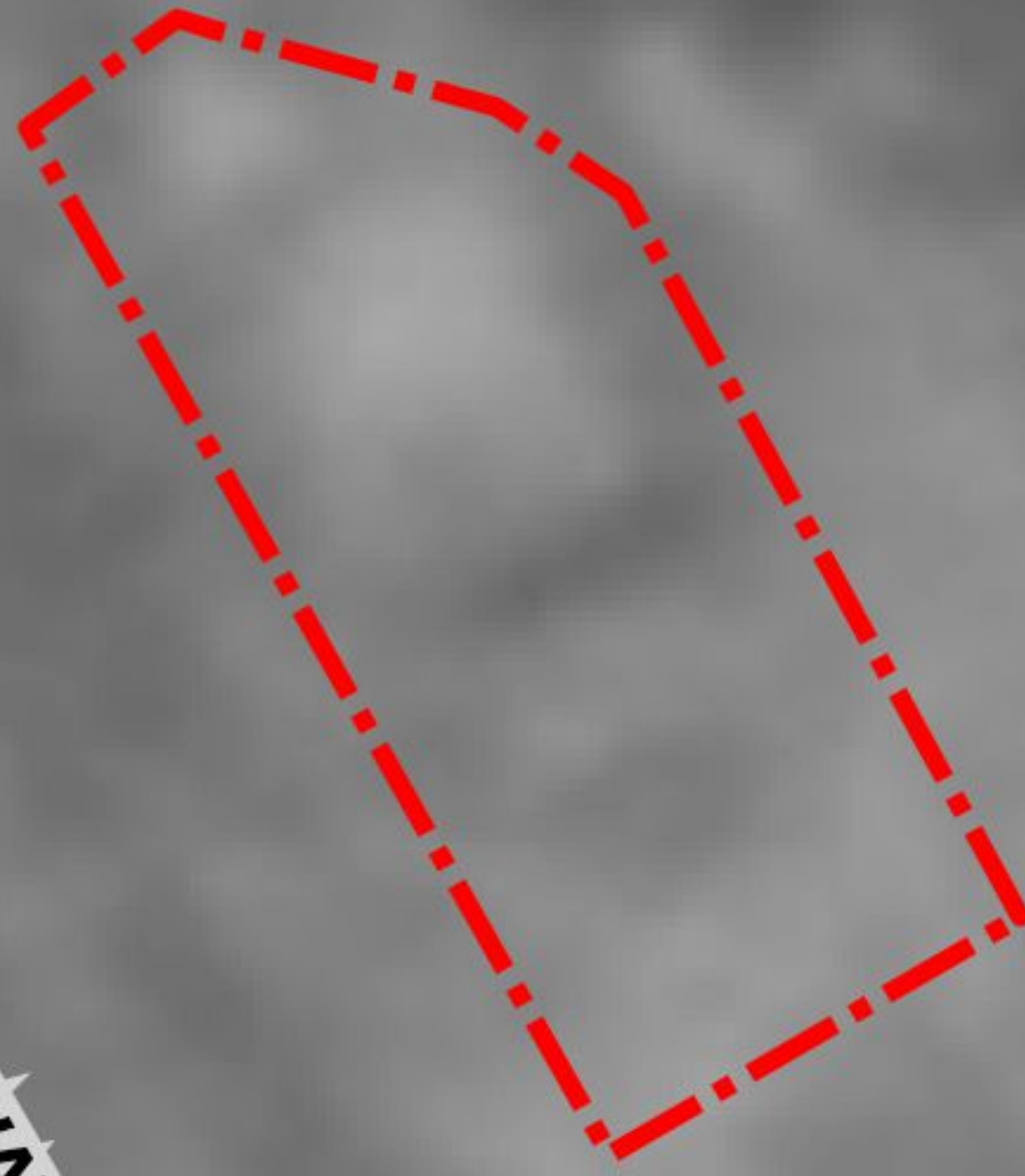
Mordialloc Creek

MORDIALLOC COLLEGE

FRANKSTON RAILWAY LINE

Nepesin Highway

Station Street



LEGEND

 Caretaker's Cottage VHI site extent

Scale 1:1,000 MGA zone 55 GDA94
Aerial photo 1931 (LANDATA)








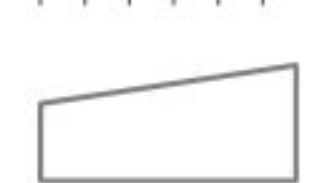

Mordialloc Creek

FRANKSTON RAILWAY LINE

MORDIALLOC COLLEGE

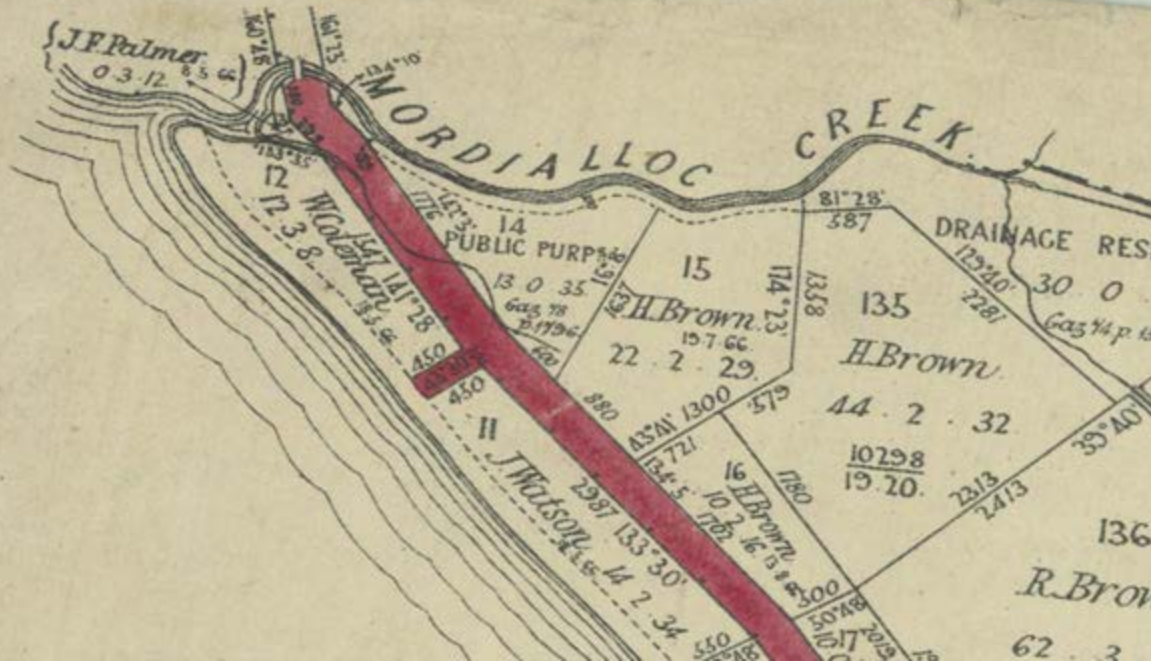
Station Street

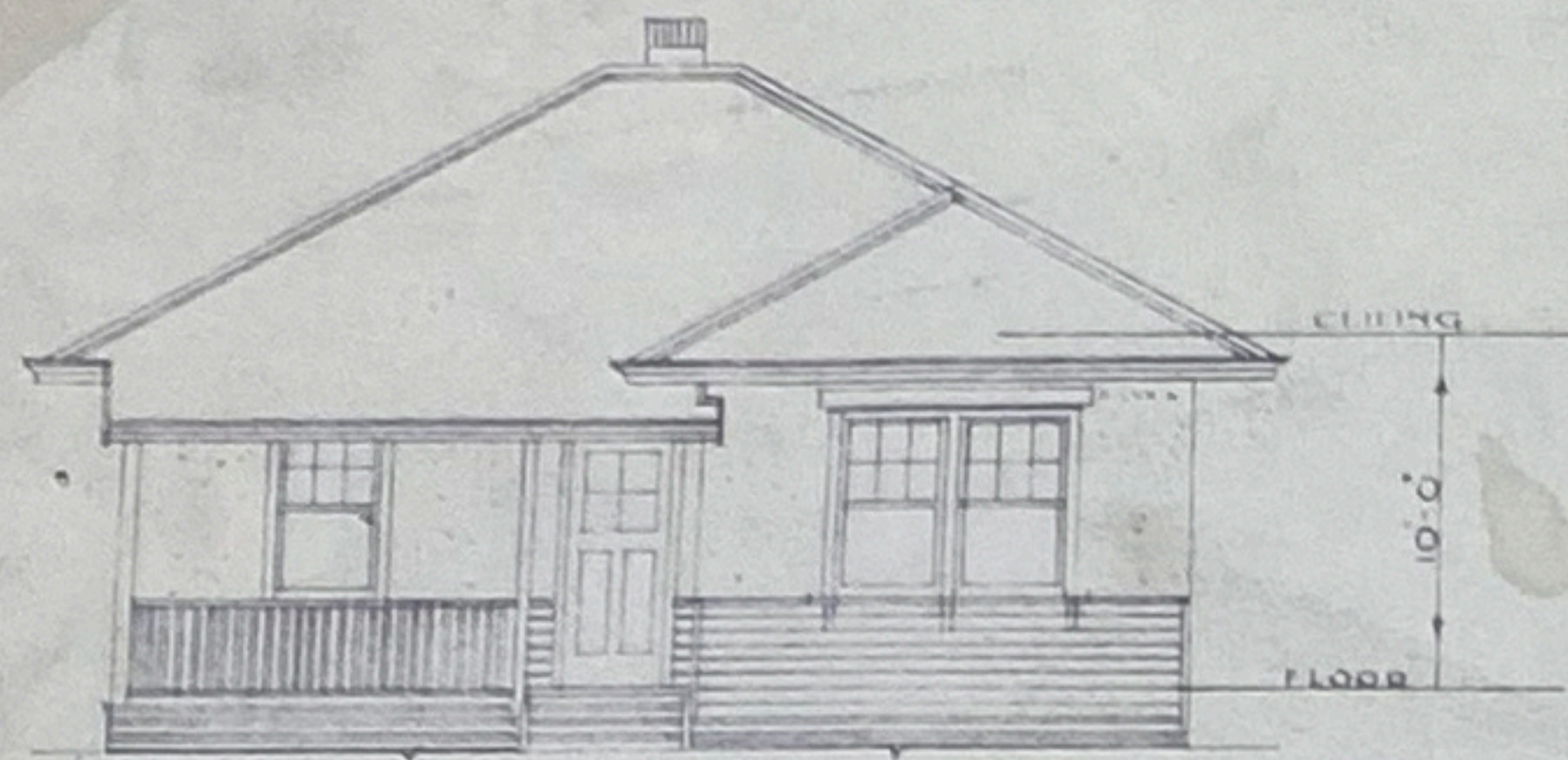
LEGEND

-  Caretaker's Cottage VHI site extent
-  Building footprint, 1945 aerial
-  Fenceline, 1945 aerial
-  Railway line
-  Property parcel

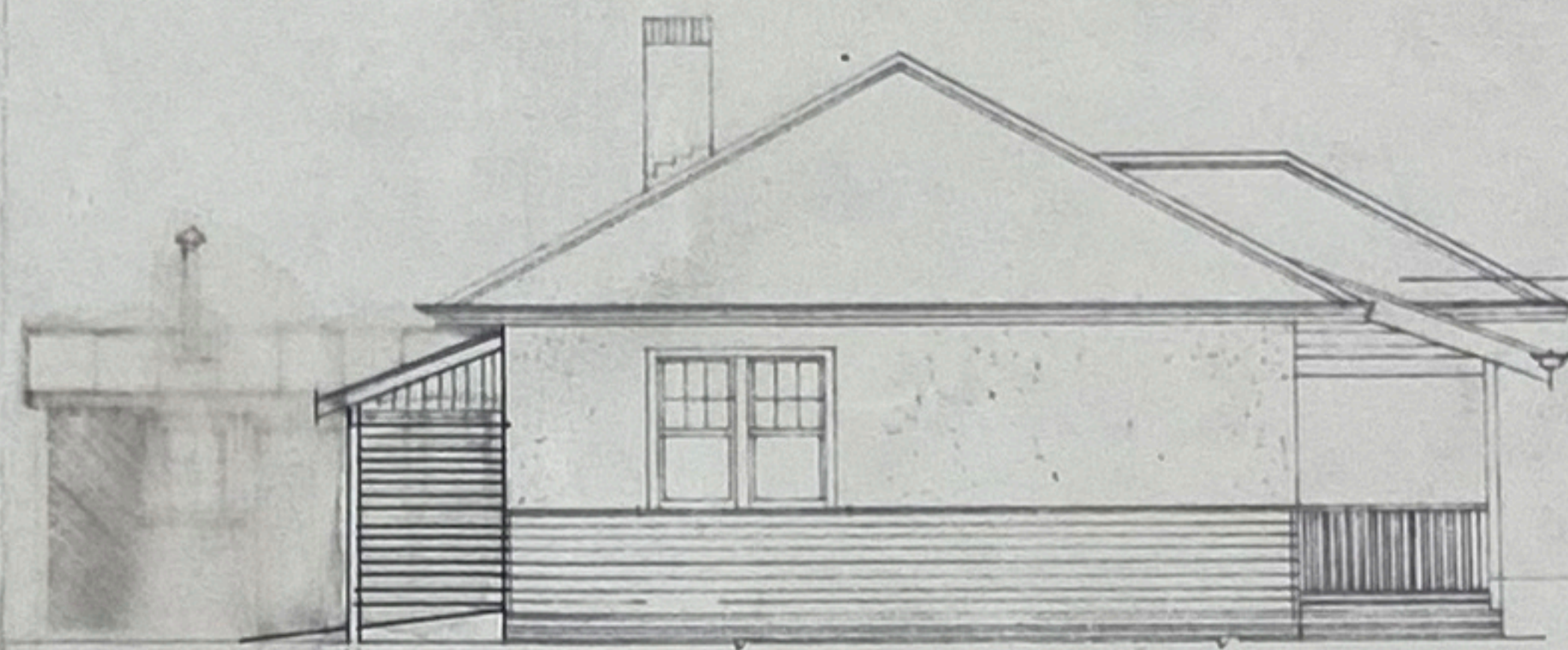
Scale 1:400 MGA zone 55 GDA94
Nearmap aerial imagery 16 Feb 2023

50 m

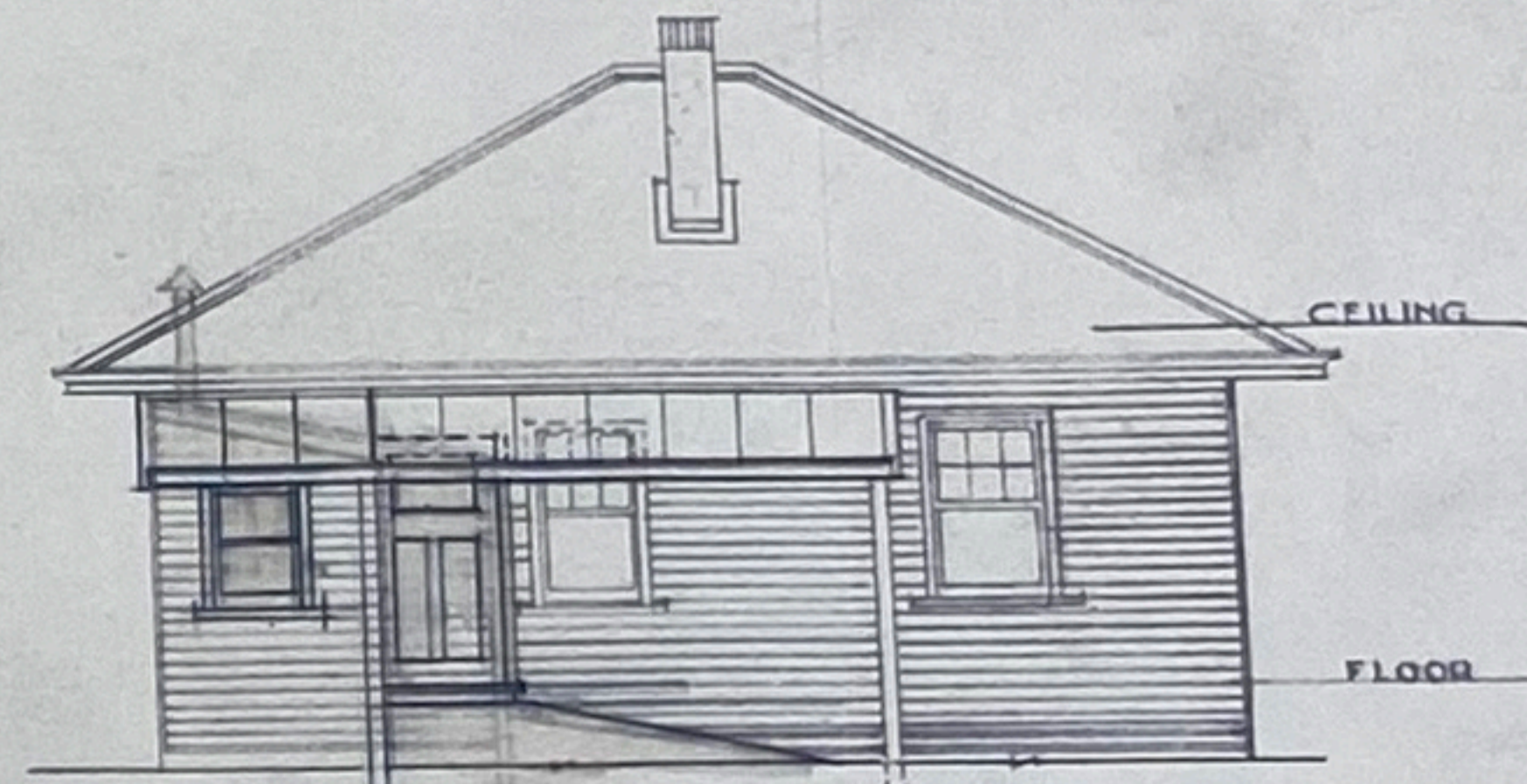




FRONT ELEVATION



SIDE ELEVATION



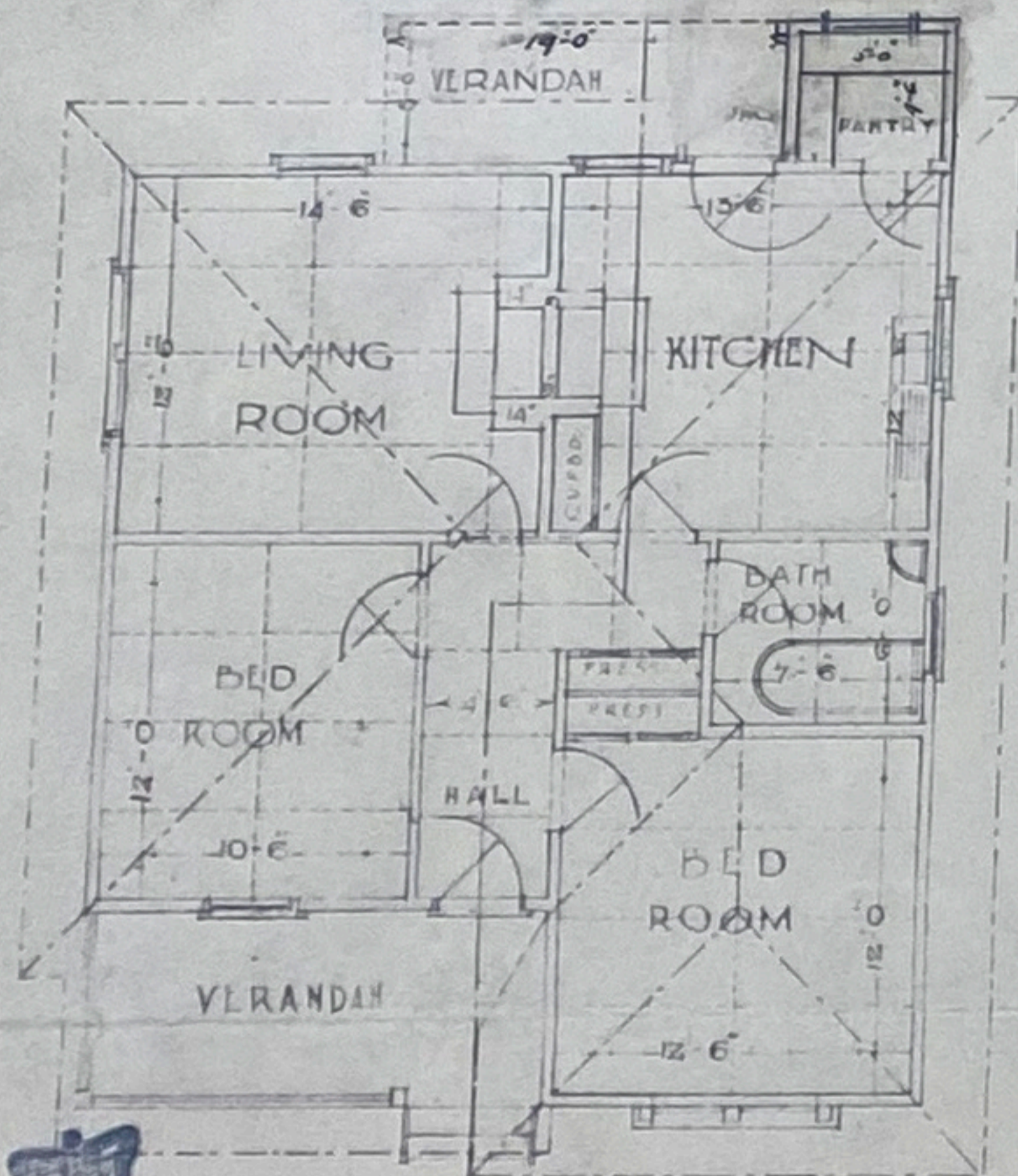
BACK ELEVATION

1928-29.
247

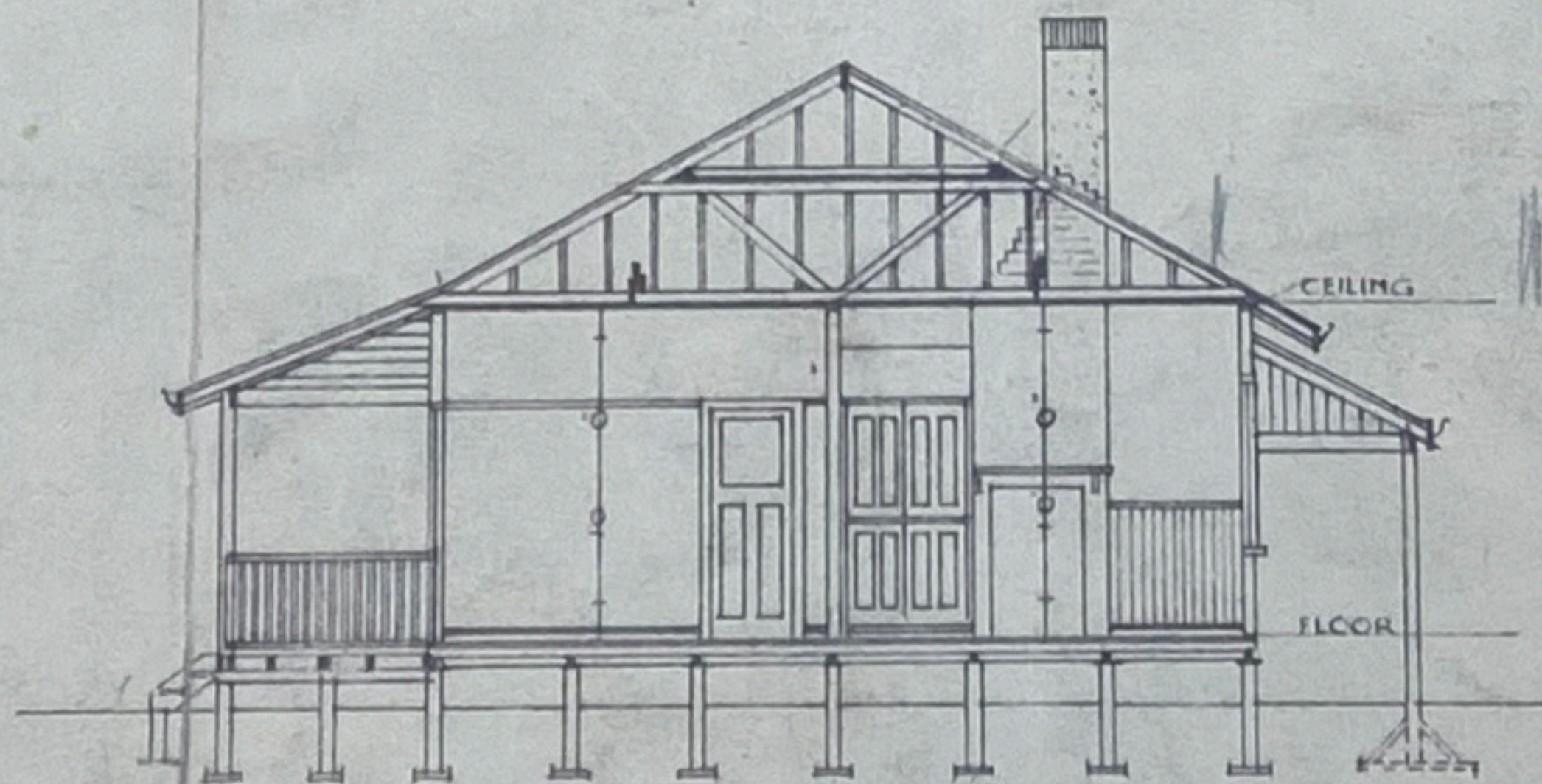
Plan of Outbuilding in Contract



SIDE ELEVATION



PLAN



SECTION A A.

Henry W Buller

THIS IS ONE OF THE DRAWINGS REFERRED TO IN MY CONTRACT ENTERED INTO THIS DAY FOR ABOVE WORKS
 MELBOURNE, 19.....
 WITNESS.....

Frank Smith
 CHIEF ARCHITECT.
 26.7.27



CARETAKERS

COTTAGE.

MORDIALLOC

HIGH

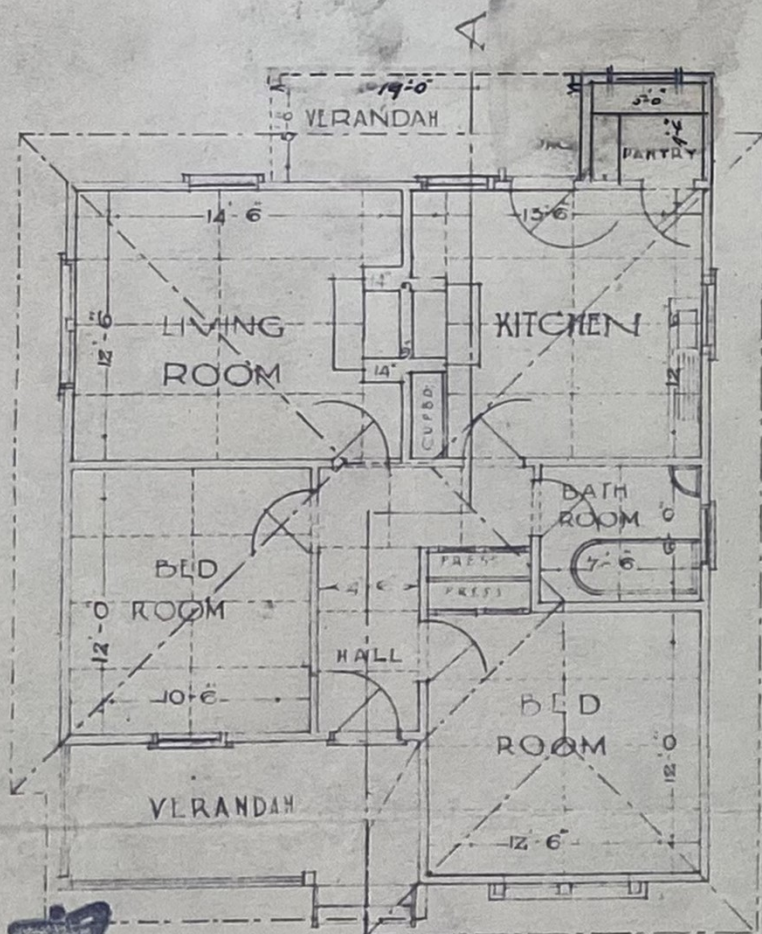
SCHOOL.

MORDIALLOC

SCALE 8 TO 1

80' x 15.1





PLAN



CARETAKERS

COTT



FRONT ELEVATION

