

PLACE NAME: SEWER AQUADUCT
 LOCAL GOVERNMENT AREA: CITY OF GEELONG

ARCHITECTURAL HISTORY (References)

STYLE OR PERIOD: Early Modern Industrial/Engineering

ARCHITECT(S)/DESIGN ORIGIN: Stone and Siddley, Engineers
 Reference: Tasmania
 Geelong Waterworks and Sewerage Trust

BUILDER: Stone and Siddley, Tasmania
 Reference: Geelong Waterworks and Sewerage Trust

PRINCIPAL ARTISANS/ARTISTS/TRADES
 Reference:

TENDER NOTICE:
 Reference:

DATE(S) OF CONSTRUCTION 1913-1915
 Reference:

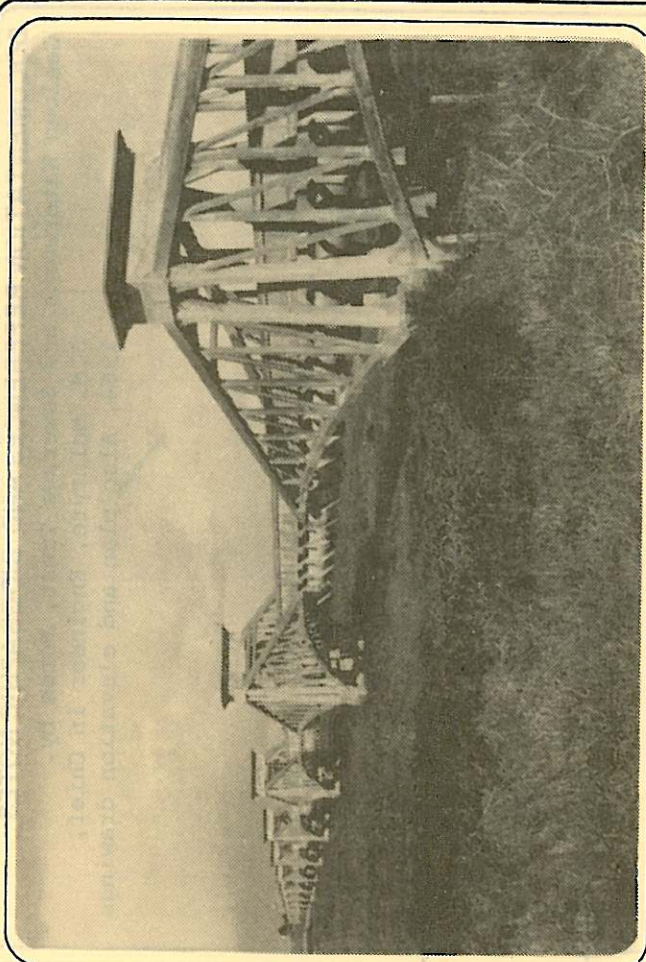
ESTIMATE/CONTRACT VALUE £19,400
 Geelong Waterworks and Sewerage Trust

SUBSEQUENT WORKS/ALTERATIONS/ADDITIONS
 Major repairs were effected to the tension ties in 1957 -
 58 at a cost of £23,627

ORIGINAL OWNER(S)/OCCUPANT(S) Geelong Waterworks and
 Sewerage Trust

SUBSEQUENT SIGNIFICANT OWNERS/OCCUPANTS

OTHER NOTES Stone and Siddley were also the contractors
 for Denny's Lascelles Ltd., wool store in Brougham Street,
 erected c 1912.



NEGATIVE FILE:

Australian Heritage Commission
 Register of National Estate

National Trust of Aust. (Vic)
 Classified/Recorded
 File No.

Historic Buildings Preservation Council
 Register No.
 File No.

Geelong Regional Commission
 Register No.56.....

IDENTIFICATION DATA

PLACE NAME Sewer Aquaduct
ADDRESS Over Barwon River
 Near Breakwater

LOCAL GOVERNMENT AREA City of Geelong

TITLE INFORMATION

MAP REFERENCE _____

PRESENT USE Aquaduct

PRESENT OWNER/LESSEE Geelong and District Water Board

ADDRESS Box 659, P.O. Geelong 3220. **TELEPHONE** (052) _____

PLACE NAME SEWER AQUADUCT
LOCAL GOVERNMENT AREA CITY OF GEELONG

DOCUMENTATION REFERENCES AND BIOGRAPHIC NOTES

Geelong Waterworks and Sewerage Trust, Notes by.
 J.M. McIntyre, Engineer in Chief,
 1964, Also plan and elevation drawings

CITATION

The Sewer Aquaduct across the Barwon River near Breakwater was designed and constructed by Stone and Siddley a Tasmanian firm of engineers and contractors, for the Geelong Waterworks and Sewerage Trust. Erected in 1913-15, this reinforced concrete structure of 14 spans was modelled on the structural system of the Firth of Forth Bridge in Scotland. The aquaduct is of paramount significance as an early example of reinforced concrete construction of delicate proportions by noted engineers Stone and Siddley who also designed the Denny's Lascelles wool store of 1912 using a similar technique.

SIGNIFICANCE OF PLACE

- Its creative and/or technical accomplishment.
- Its demonstration of a way of life, custom, process or function no longer practised, in danger of being lost or of exceptional interest.
- Its strong association with an important figure or figures, development, or cultural phase.
- Its townscape and/or landscape value.
- Its scarcity value.

SIGNIFICANCE

- LOCAL
- REGIONAL
- STATE
- NATIONAL
- WORLD

CONDITION

- EXCELLENT
- GOOD
- FAIR
- DETERIORATED
- RUINS

INTEGRITY

- HIGH
- LOW
- ALTERED
- DAMAGED

RECOMMENDATIONS: PROTECTIVE MEASURES

Geelong Regional Commission Register
 Historic Buildings Council Register
 Australian Heritage Commission Register of the National Estate
 National Trust of Australia (Victoria) Register.

DOCUMENTATION — Allan Willingham, Architect, 151 McKean St.,
 North Fitzroy, 3068. Tel: 03 489 8492.

SIGNATURE..... **DATE**.....