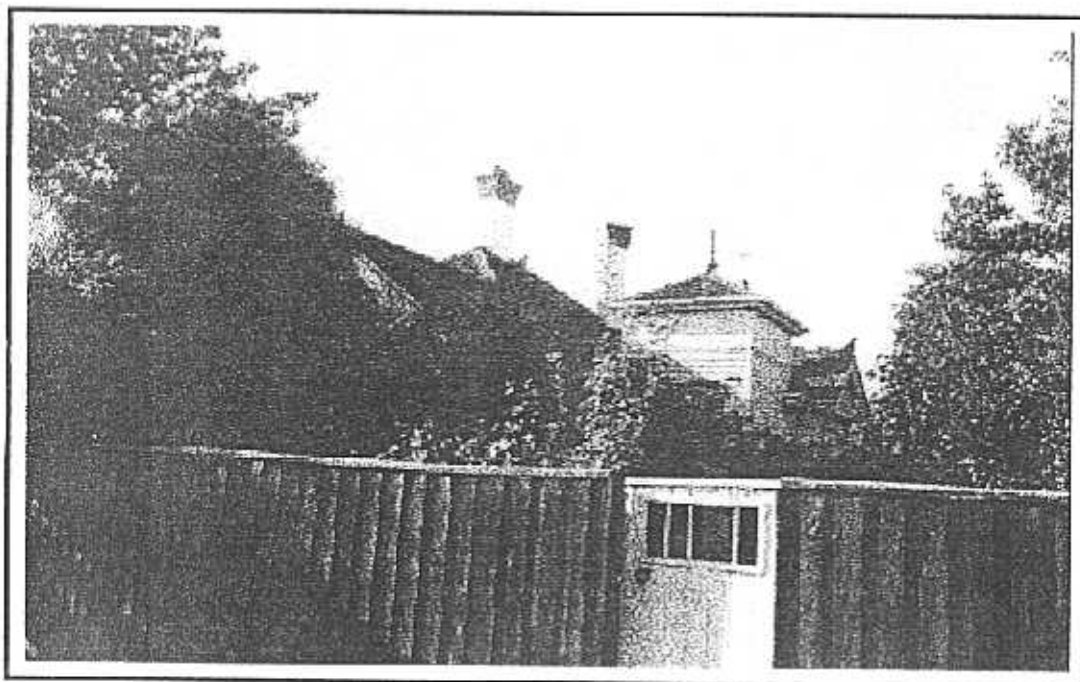


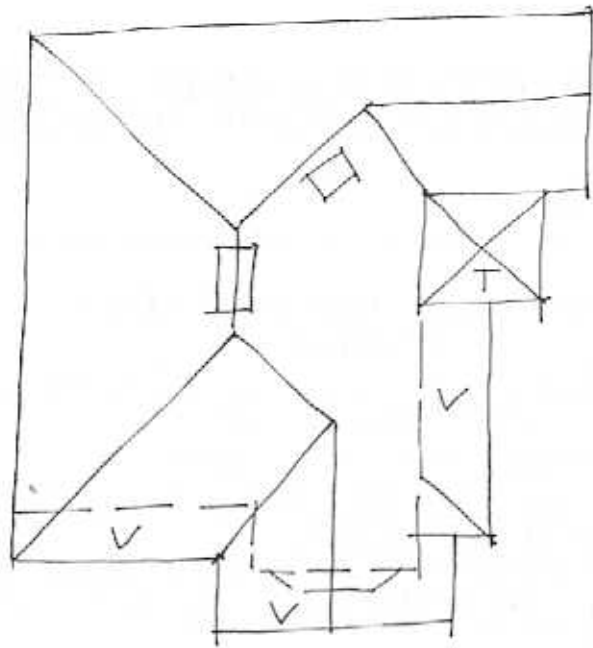
**NEWTOWN URBAN CONSERVATION STUDY. - 'C' CITATIONS. Ref: 20**

Richard Peterson Architect & Conservation Consultant. Daniel Catrice Historian 1996.

<b>NAME:</b> —			
<b>ADDRESS:</b> 20 Aphrasia Street.			
<b>USE:</b> House.			
<b>SIGNIFICANT DATE:</b>		<b>CONSTRUCTION DATE:</b> 1901	<b>SOURCE:</b> 1
<b>DESIGNER:</b>		<b>BUILDER:</b>	
<b>CRITERIA:</b> H1,2,6; Ar1,3.		<b>HISTORIC THEME:</b> 2.2, 2.3	
<b>DESCRIPTION:</b> STYLE: Edwardian		<b>STORIES:</b> 1	<b>DETACHED.</b>
<b>MATERIALS:</b> WALLS Timber		<b>ROOF</b> Iron	<b>STRUCTURE</b> Stud.
<b>CONDITION:</b> Good ^		<b>INTACTNESS:</b> Good.	<b>THREATS:</b> —
<b>SIGNIFICANT INTACT ELEMENTS:</b> FORM, VERANDAH, ROOF FORM, GABLE DECORATION, ROOF DECORATION, VERANDAH DECORATION, WINDOWS, CONTEXT: Nos. 17, 19 & 21.			
<b>SIGNIFICANCE:</b>			
<b>TYPE:</b> HISTORICAL, ARCHITECTURAL.			
<b>LEVEL:</b> LOCAL.			
<b>DESIGNATION EXISTING:</b> PLANNING SCHEME.			
<b>RECOMMENDED CONTROL:</b> PLANNING SCHEME.			
<b>GRID REF:</b>	<b>SURVEY:</b> RP	<b>DATE:</b> 25.1.96	<b>NEGS:</b> 1,25



2C



No 22

Nº 20 (Ref 20)

APHRASIA STREET

No 13

**HISTORY:** This house was built in 1901 for draper, Edward Murphy. Murphy lived here until the late 1920s. The next occupant of the house was Ernest Shroder, a chemist. The owner of the property during this period was the Australian Cement Works, Fyansford. Shroder lived here until after the Second World War. The house was then occupied by a succession of people, F.H. Morris, then J.P. McKimmie and by 1970, J.G. Sleeman.<sup>1</sup>

**VISUAL DESCRIPTION:** A hip-roofed timber house, transitional from Victorian to Edwardian. The right side rear and the right front bays project as gables. The upper gables are timbered roughcast and jetty on convex brackets. Across the front, returning around the right angle is a veranda under the hip with a round rail valance over the entry, otherwise roughcast on fretwork brackets. At the angle, over the entrance, is a square mock tower, with a parapeted hip-roof, terminating in a finial. There are galvanised iron formed finials and crenellated crests. Chimneys have brick Venetian tops and pots.

**COMPARATIVE ANALYSIS:** If the house is provided by the Cement Works for employees, it could be comparable to others so provided in Newtown and gain significance for this reason.

**SIGNIFICANCE:** An interesting house transitional from Victorian to Edwardian, built in 1901.

It is architecturally significant locally as a representative example of this transitional style and for its mock tower element marking the entrance.

It is historically significant as an embodiment of the way of life in Newtown at the turn of the century, as an early example of its architectural style and possibly for its association with a local industry, the Australian Cement Works and its provision of housing for management (?) as a development by industry to the community life of Newtown.

---

<sup>1</sup> *City of Newtown and Chilwell Ratebooks*, 1901-02, 1927-28, 1931-32.  
*Sands & McDougall Directory of Victoria*, 1946, 1956, 1961, 1970.