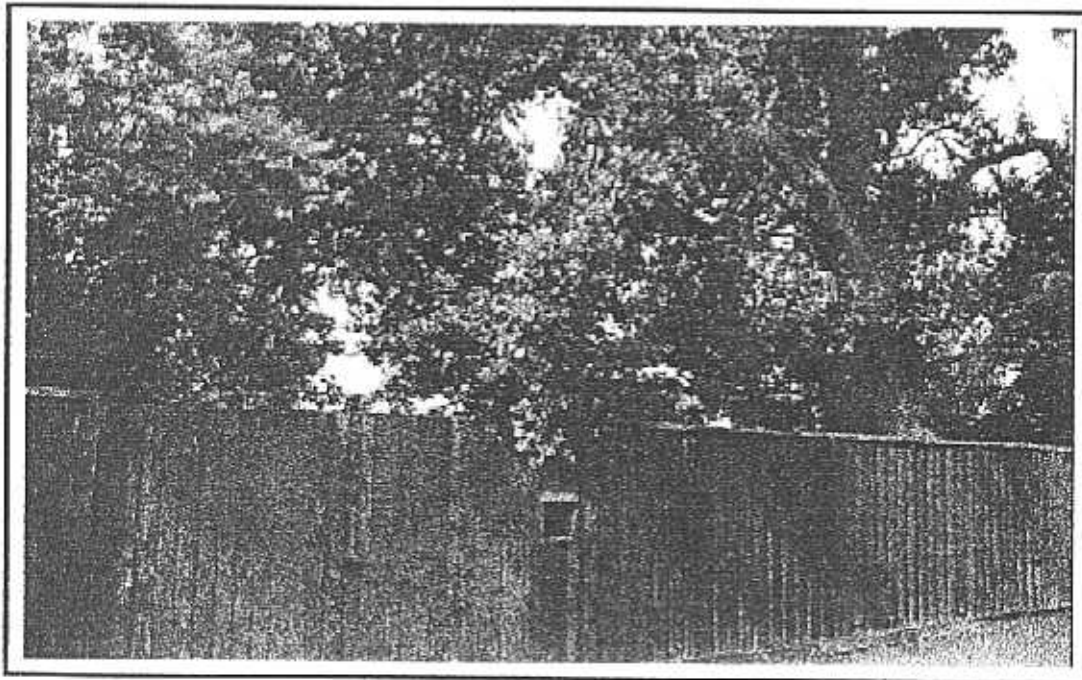


**NEWTOWN URBAN CONSERVATION STUDY, - 'C' CITATIONS. Ref: 24**

Richard Peterson Architect & Conservation Consultant, Daniel Catrice Historian 1996.

<b>NAME:</b> Leven Lee. <b>ADDRESS:</b> 29 Aphrasia Street.
<b>USE:</b> House. <b>CONSTRUCTION DATE:</b> 1903-7 <b>ALTERATIONS/ADDITIONS:</b> ? <b>DATE:</b> 1920s? <b>SOURCE:</b> Visual <b>DESIGNER:</b> — <b>BUILDER:</b> — <b>SOURCE:</b> <b>CRITERIA:</b> H1; Ar1. <b>HISTORIC THEME:</b>
<b>DESCRIPTION:</b> <b>STYLE:</b> Edwardian <b>STORIES:</b> 1 <b>DETACHED.</b> <b>MATERIALS:</b> WALES Brick <b>ROOF</b> Iron <b>STRUCTURE</b> Lb. <b>CONDITION:</b> Good? <b>INTACTNESS:</b> ? <b>THREATS:</b> -
<b>SIGNIFICANT INTACT ELEMENTS:</b> FORM. PORCH. ROOF FORM. PARAPET DECORATION. CHIMNEYS. TREES.
<b>SIGNIFICANCE:</b> <b>TYPE:</b> HISTORICAL. ARCHITECTURAL. <b>LEVEL:</b> LOCAL.
<b>DESIGNATION EXISTING:</b> PLANNING SCHEME. AREA. <b>RECOMMENDED CONTROL:</b> PLANNING SCHEME. AREA.
<b>GRID REF:</b> <b>SURVEY:</b> RP <b>DATE:</b> 26.1.96 <b>NEGS:</b> 1.30 (Obscured).



**HISTORY:** Leven Lee, an 8-roomed brick residence was built between 1903 and 1907, and owned by Charlotte M. Dobie. By 1922 the house was rented to Robert Smith, a wool scourer. Charlotte Dobie resumed her occupancy and continued to reside here into the 1930s. By 1937 she jointly owned the house with Jessie L. Wright.<sup>1</sup>

**VISUAL DESCRIPTION:** A gambrel-roofed complex Edwardian red brick house. It has an angled minor gable at right with curved (Asian influenced?) bargeboards and roughcast, a larger roughcast timbered gable with terra-cotta cresting facing, with a front verandah with brackets and posts under a hipped roof. On the left side rear is a further gable. In the angle at left is an important square entrance tower, rendered. Its parapet is scalloped with plate capping, with sinuous tendril-like decoration. There is a large oak (*Quercus*). (Obscured).

**SIGNIFICANCE:** A complex brick Edwardian house, built between 1903-07. It has architectural significance as characteristic of this style, but with interesting elements such as important curved rafters, (possibly Asian influenced), important entrance tower and Art Nouveau influenced organic decoration. It is historically significant as a representative embodiment of confident family life in Newtown, before the Great War.

**INTACTNESS:** (Insufficiently visible to assess). The high fence is not appropriate.

**CONDITIONS & THREATS:** The oak has been damaged by lopping for power lines.

---

<sup>1</sup> *City of Newtown and Chilwell Ratebooks*, 1903, 1907, 1910, 1912, 1916, 1919, 1922, 1927, 1932, 1937.