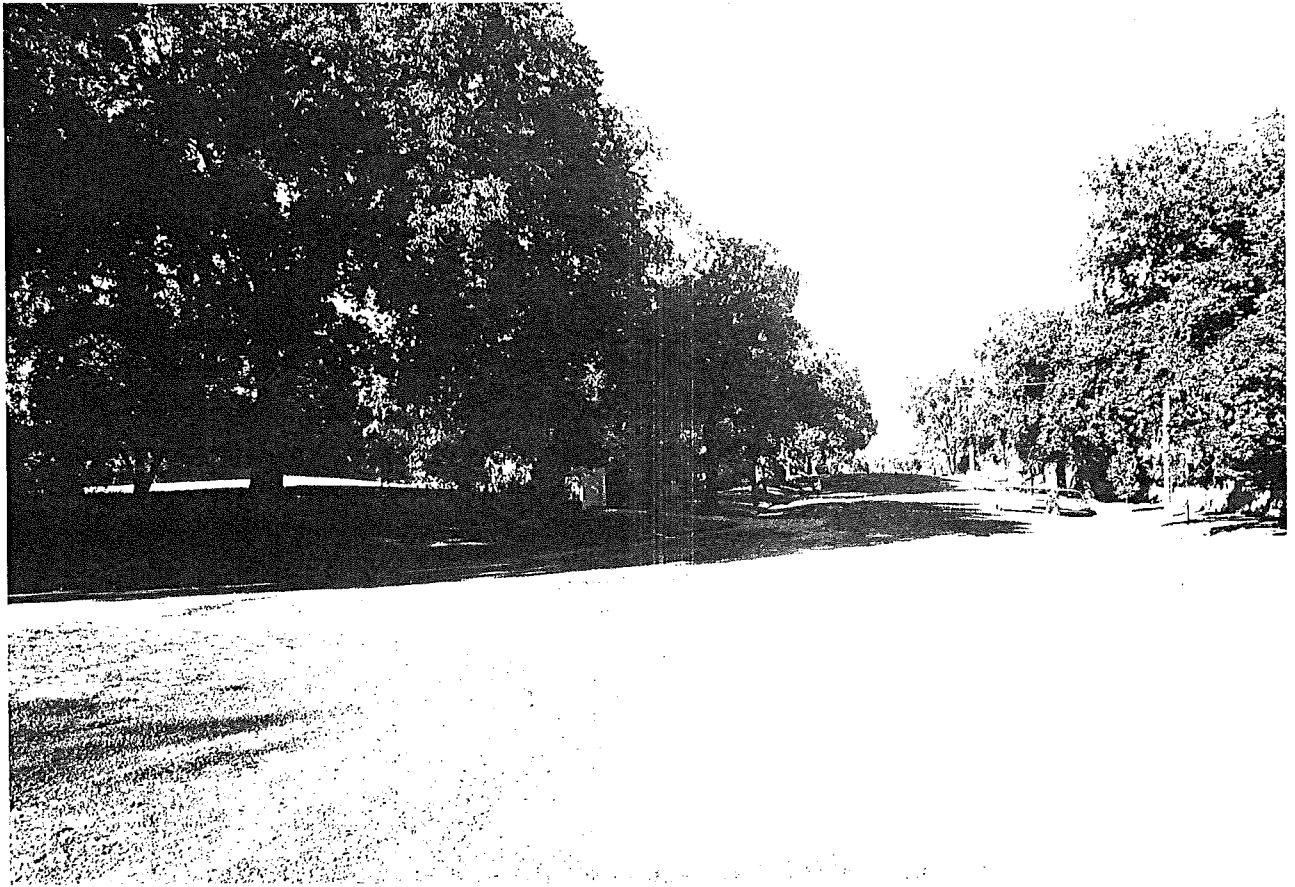


**PRECINCTS: 6.02, 6.04 & 6.05  
BENDIGO RESIDENTIAL**



**3-18**

*The leafy path of Barkly Street, as it crosses Barkly Terrace*

**LGA: BENDIGO CITY MAP: 7.07**

**Contributory Streets Precinct 6.2**

BARKLY,  
BARNARD,  
FOREST,  
LANGSTON,  
MOORE,  
VALENTINE,  
VIEW  
WATTLE

**Contributory Streets Precinct 6.4**

HARRISON  
MILROY  
STEVENSON  
VIEW



**3-19**

*Fernville Terrace, 35-41 Mackenzie Street, 1885; demonstrating the influence of the steep terrain on house design in this part of Bendigo where sub-basements become full height on the downhill side of a site.*

**Contributory Streets Precinct 6.5**

ARNOLD  
DROUGHT  
FLOOD  
FREDERICK  
NIEMANN

**History /Description**

Suburban allotments, fronting Barnard Street and sold in 1857, link the former Benevolent Asylum (1859- ) to the old commercial heart of View Street. To the north are the crescents and quasi public roadway squares, formed by their sweeping curves. Here, most suburban lots were also sold in 1857, at least one going to its creator, surveyor P W Larritt (CA6/33C), sited in Barkly Street, centrally between the two terraces (now Lansellstowe, 60 Barkly Street).

Closer to Moore Street, the effect of the nearby Hustlers Hill reef gold mines (1853- ), was felt with freeholds being granted as late as 1925 on the north side of Moore Street and the 1950s, on the south side of Niemann Street.

Nevertheless, houses were built on these Lots prior to freehold, (i.e., 96 Moore Street). Over time, Bendigo's best house group has developed around Barkly Street and Terrace, including the house of one of Bendigo's creators, William Vahland, at number 52, Strathlachlan at 80 Barkly Terrace West (1858- ) and, of a later period, the Desbrowe Anpear house at 90 Moore Street and the Californian Bungalow style 98 Moore Street built for the Leggo family.<sup>1</sup> The impressive Convent of Mercy (1865- ) is a fitting end to Barkly Street, signalling the start of

<sup>1</sup> Butcher & Flanders, p.83f

another formidable residential group which faces View Street. Unrelated recent development, as part of the Convent grounds, is the only obstruction to a continuous late 19th and early 20th Century villa grouping extending from Barkly Street, up View to Langston Street. The best View Street house group in the precinct starts at Denderah (1888, 1910) at Neimann Street and continues along the east side to Langston Street.

Lots in this area were sold in the 1860s and, as with other parts of the precinct, no reef lines or alluvial gold gullies ran near it. Substantial villas line the street in its descent to Ironbark Gully, including Malmo (1898), Banool (1871) and Rosemont (1892).<sup>1</sup> Well-known Bendigo homes such as Lansell and Leggo occupied these houses.<sup>2</sup> Opposite, in View Street, more modest houses, nevertheless, present a unified streetscape, terminating in what was once Henry Sims' grocery store at Langston Street (305).<sup>3</sup>

In the west of the precinct are fine 19th, early 20th Century residential streetscapes in Forest and Wattle Streets, north of Barnard Street. Individually significant sites include numbers 113 (c1871), 116, 117, 119, 126, 128, Acacia Villa at 129-131, 133 and 140 Forest Street and, in Wattle Street, numbers 166, 167, 169, 174, 179, 182, 184 and the former fuse factory at 193. As with View Streets, proximity to former gold working areas, at Ironbark Gully, signal a depletion of surviving built fabric from the past, making Langston Street the cut-off point on the north.

Physical characteristics resemble those for residential parts of Precinct 6.01: single-storey, pitched roof (iron or slate) detached villas constructed mainly from brick (rendered or face), picket front fencing.

#### Key Sites 6.02

Thomas Scott House, 16 Bancroft Street, 1891  
 Catholic Convent of Mercy & St.Mary's College, Barkly Street 1865-  
 Edward Boase House, 30 Barkly Street, 1873-4  
 Ernest Mueller House, 49 Barkly Street 1909  
 William Vahland Residence, 52-58 Barkly Street 1858c-  
 Leonard Lansell's Lansellstowe, 60 Barkly Street 1913  
 Julius Cohn House (1867- Bendigo Post Office), 72 Barkly Street 1867  
 Adrian Mueller House, 83 Barkly Street 1914  
 Stuart's Kisbou Court, 93 Barkly Street 1869-?  
 Lachlan MacLachlan's Strachlachlan, later Lauriston, 80D Barkly Terrace, 1858-9  
 William Vahland and Jacob Cohn's Hustler's Terrace (part), 94 Barkly Terrace, 1874  
 Bendigo Benevolent Asylum, 100-104 Barnard Street 1859-  
 William Jones House (c1893-1907), 106 Barnard Street 1893  
 Warren's Park Terrace, 140-144 Barnard Street 1892  
 James Brierley's (1870-) Newington, 152-154 Barnard Street 1873-  
 George Sunderland's House, 166-168 Barnard Street 1893  
 Carl Mueller's Sandhurst Grammar School, 176 Barnard Street 1886  
 House & Surgery, 202- Barnard Street 1895C  
 John Wheaton's Hybla, 14A Forest Lane, 1873-4c  
 Alice Stilwell's House, 117 Forest Street 1909  
 Annie Jackson's House (1904-1907), 126 Forest Street 1904  
 Robert Matchett's House (1908-1930), 128 Forest Street 1908  
 John Gleeson's House (c1901-30) 133 Forest Street 1901-  
 Norman De Ravin's House (1912-25), 134 Forest Street 1912  
 Lawrence Murphy's House, possibly Verona, 159 Forest Street 1909?  
 Rutherford House (c1893-1907), 173 Forest Street 1894  
 Wilkie House, 3 Langston Street 1901  
 John Fly's Cossackdale, 12-14 Langston Street 1865-96  
 Levy's Graylings 90 Moore Street 1924  
 William McKenzie's House (c1910-20), 96 Moore Street 1911C  
 Arthur Leggo's (1920-1935) Kalimna, 98 Moore Street 1920  
 George Young's House (c1865-1889), 10 Valentine Street 1866-80  
 Karl Van Damme's Malmo, former 16 Valentine Street 1898  
 John Martin's House (c1932-1940) 23 Valentine Street 1932  
 James Allan's Arran, 238 View Street 1895  
 Charles Williams' Eurella, 247? View Street 1860  
 George Vibert's Denderah, 268 View Street 1888-  
 Hugh Esler's Banool, 282 View Street 1871  
 James Watts' House (c1866-1881) later Bendigo Rescue Home, 184? Wattle Street 1866-  
 Perry & Hunter's (1875-) Fuse Factory, 193-197 Wattle Street 1875-  
 Anthony Pattison's House, 201-203 Wattle Street 1925

#### Key Sites 6.04

4 Anderson Street 1860C  
 6 Anderson Street 1905c  
 8 Anderson Street 1890c

<sup>1</sup> b & f, P.85F  
<sup>2</sup> D1920  
<sup>3</sup> D1920



**3-20**

*Precinct 6.04-corner of Milroy and Stevenson, precinct 6.4: corner store and adjacent timber houses of the late 19th early 20th centuries.*

13 Anderson Street 1870C  
The Linolds, House, Garden & Garden Wall 14 Anderson Street 1910c  
Shop & Residence 15 Milroy Street 1905c

**Other Contributory Sites 6.04**

- 2 Anderson Street 1925c
- 9 Anderson Street 1905c
- 11 Anderson Street 1870c
- 022 Harrison Street 1870C
- 023 Harrison Street 1935c
- 024 Harrison Street 1935c
- 027 Harrison Street 1920c
- 029 Harrison Street 1925c
- 031 Harrison Street 1930c
- 033 Harrison Street 1880c
- 035 Harrison Street 1880c
- 037 Harrison Street 1920c
- 039 Harrison Street 1910c
- 041 Harrison Street 1910c
- 043 Harrison Street 1915c
- 009 Milroy Street 1905c
- 013 Milroy Street 1905c
- 019 Milroy Street 1905c
- 021 Milroy Street 1905c
- 023 Milroy Street 1925c

**Key Sites 6.05**

169 Arnold Street 1905c  
 175 Arnold Street 1910c  
 184 Arnold Street 1910c  
 189 Arnold Street 1905c  
 192 Arnold Street 1910c  
 199 Arnold Street 1905c  
 020 Drought Street 1910c  
 004 Niemann Street 1910c  
 006 Niemann Street 1875c  
 008 Niemann Street 1910c  
 012 Niemann Street 1925C

**Other Contributory Sites 6.05**

145 Arnold Street 1925c  
 147 Arnold Street 1925c  
 153 Arnold Street 1900c  
 157 Arnold Street 1925c  
 163 Arnold Street 1870c  
 165 Arnold Street 1870c  
 167 Arnold Street 1925c  
 173 Arnold Street 1910c  
 181 Arnold Street 1900c  
 183 Arnold Street 1900c  
 187 Arnold Street 1900c  
 188 Arnold Street 1900c  
 190 Arnold Street 1925c  
 192a Arnold Street 1905c  
 193 Arnold Street 1900c  
 195 Arnold Street 1935c  
 197 Arnold Street 1925c  
 028 Drought Street 1910c  
 030 Drought Street 1910c  
 036 Drought Street 1910c  
 040 Drought Street 1905c  
 046 drought Street 1925c  
 056 Drought Street 1905c  
 058 Drought Street 1925c  
 064 Drought Street 1925c  
 001 Niemann Street 1910c  
 003 Niemann Street 1925c

**Significance 6.02**

As with 6.01, this precinct contains some of the study area's most prestigious houses, dominantly of the 19th and early 20th century era. Persons associated with them include successful mining speculators, such as Mueller and Lansell, and this century's industrial leaders in the Leggo family, both categories reflecting Bendigo's economic base pre and post World War One. The siting of the mining figures, in particular, away from their mine complexes is a departure from early precedents made by Lazarus and Lansell, who lived next to their mines, and marks the creation of Bendigo's early middle-class residential enclaves.

The study area's best designers (including Beebe and Vahland) were instrumental in the construction of many of these houses while the hillside siting of most of the major buildings in the precinct lends the visual diversity of viewpoint and individual building scale. Added to this are the distinctive curved street forms of Barkly Street and Terrace which echo the baroque plan of the commercial centre on the flat below. Close by but disconnected by intervening unrelated development are the two major benevolent institutions in the city, the hospital and the benevolent asylum and, further south is what was once Bendigo's most popular recreation centre, Rosalind Park and the Upper Reserve which was once an ornamental series of lakes and swimming baths but is now a series of sporting grounds. All of these adjacent historic sites lend context to the precinct.

**Significance 6.04 & 6.05**

Precincts 6.04 & 6.05 adjoin 6.02 on the north and north-east and hence act as a buffer to this important area. Nevertheless they does contain some locally interesting streetscapes, individually significant buildings and groups of well-preserved housing from Bendigo's golden era. In the case of precinct 6.05, the terrain enhances views to structures and offers elevated sites for unusual complexes such as 14 Anderson Street with its notable garden wall enclosing the hilltop.