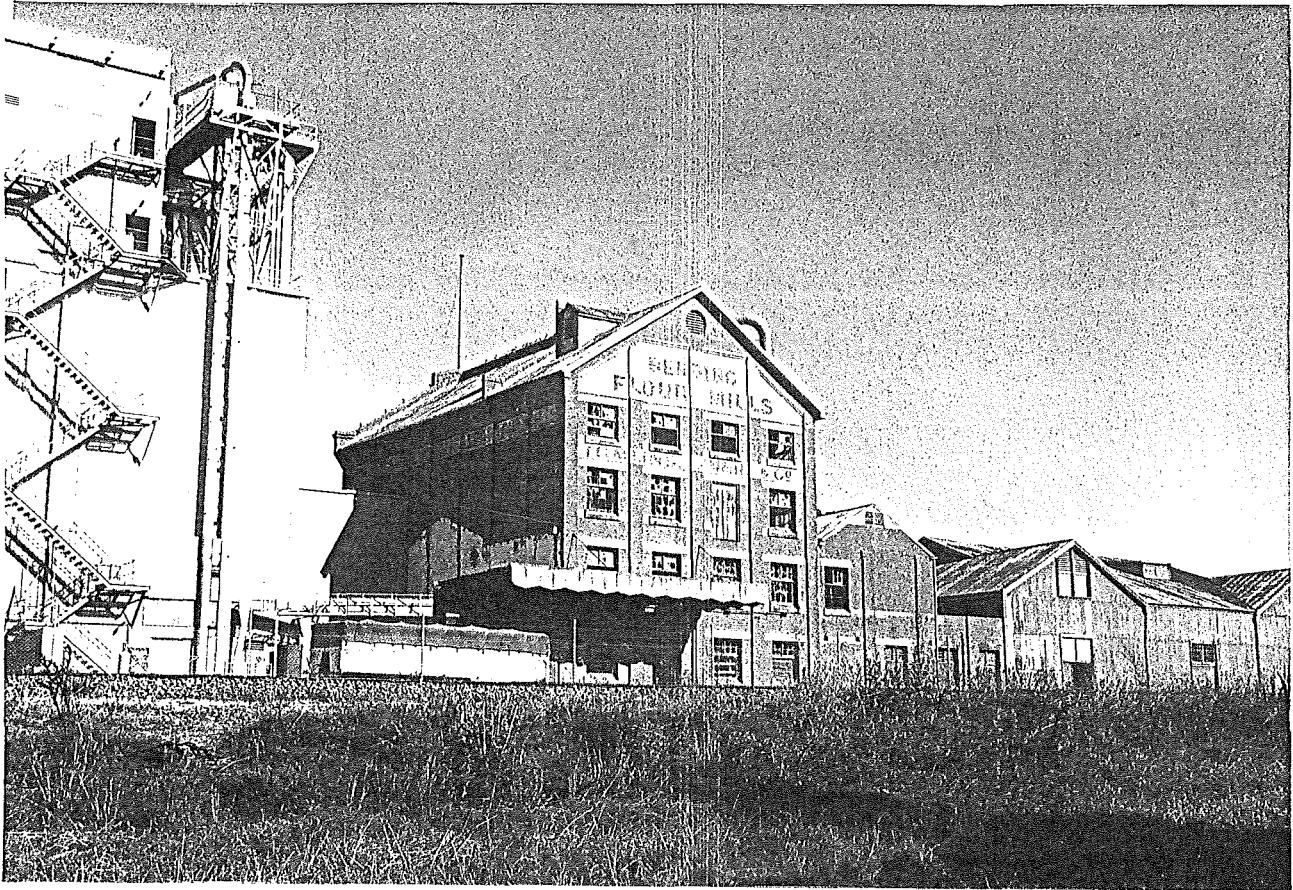


PRECINCT: 12.00
BENDIGO INDUSTRIAL PRECINCT



3-42

Bendigo Flour Mills, off Charleston Road

(see Vol.4, Industrial Sites)

Contributory Streets

Charleston Road
Tramways Avenue

Key Sites

Hume & Iser Workshop 44-46 Charleston Road 1903c-?
Tomlins Simmie & Co. Flour Mills, Now Baristoc 87 Charleston Road 1920c
Pacific Textiles Bendigo Pty Ltd Charleston Road
Electric Supply Company Power House, 6 Lansell Street 1901-
Tram Depot & Museum, Tramways Avenue 1901-

(Refer to individual sites in appendix to Volume 4, Industrial Sites of Bendigo)

Significance

Many individually important 20th century industrial sites are in this location, presumably because of access to rail sidings and cheaper land than in the traditional manufacturing centre near the Bendigo railway station. They form a distinct group which would have presumably generated related housing groups and social centres (ie. hotel) nearby.