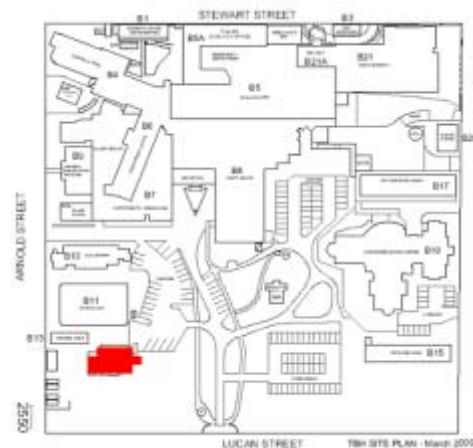


## B12 Yarrington House



**Location:** Corner of Lucan and Arnold Streets  
**Built:** c.1920.  
**Designer:** Unknown  
**Builder:** Unknown



### History:

Little is recorded about this building, but stylistically it appears to have been built in the 1920s and was described in the Hospital's 1935/36 Annual Report as the Superintendent's Residence.

### Description:

This single-storey residence faces the main driveway of the hospital. It has a red brick plinth, with rendered walls above and a predominantly hipped roof covered with concrete tiles. The focus of the design is a central gabled porch on the north-east elevation. It has a large round-arched opening, emphasised by an elongated keystone and hood moulding. It appears as though the arch was originally face brick, but has been painted. Triangular buttresses to the front and sides of the porch provide further visual interest.

Either side of the porch are double-hung, timber-framed windows in a set of three. The windows feature decorative leadlight in an Art Deco style, and rendered flower boxes permanently mounted below. A convex

bay window, also comprising a set of three double-hung windows with Art Deco leadlight, projects from the south-east elevation. Elsewhere, the windows are similarly timber-framed, but not elaborated with leadlight.

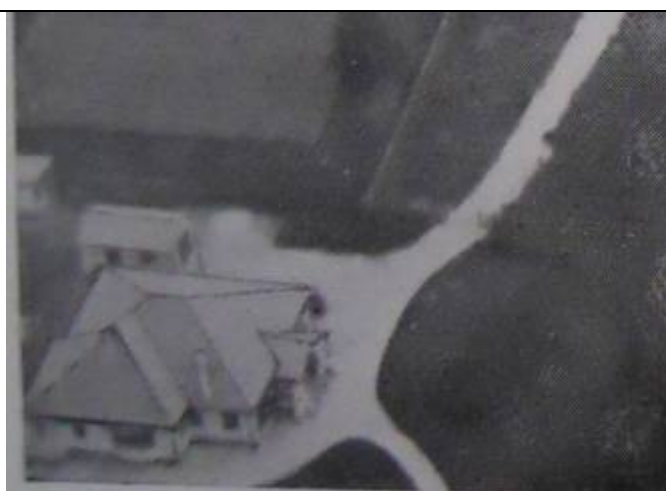
Two tall and slightly tapered rendered chimneys extend from the south-eastern side of the building.

Later modifications include a concrete ramp and handrails up to the front porch. The porch floor has been concreted and the front door modified. A rendered addition with a gabled tiled roof has been added to the rear of the building.

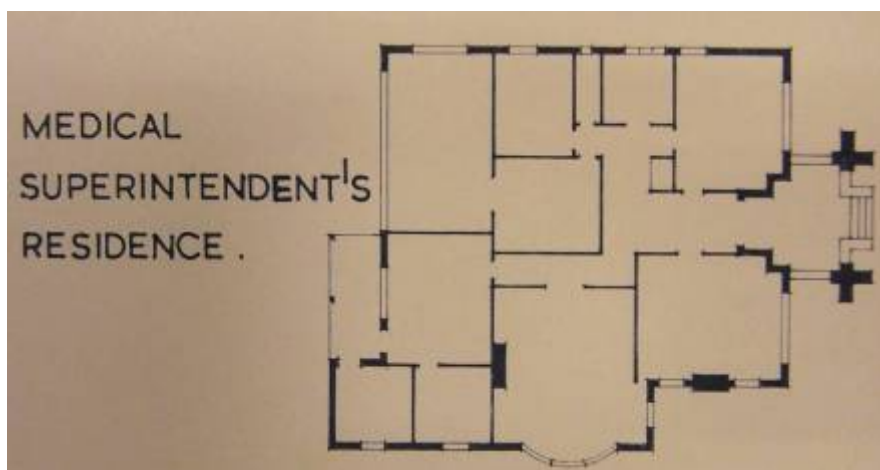
### Cultural Heritage Significance

Historic Theme: Development of the Bendigo Hospital

Contributory significance to the major historic theme and to the site as part of the group of the structures which define the site's earliest history.



Aerial photograph, 1935.  
Source: Bendigo Health Records



Plan of Yarrington House, as existing in 1959.  
Source: Archives of Department of Human Services, Drawing by Yuncken Freeman Brothers Griffiths & Simpson