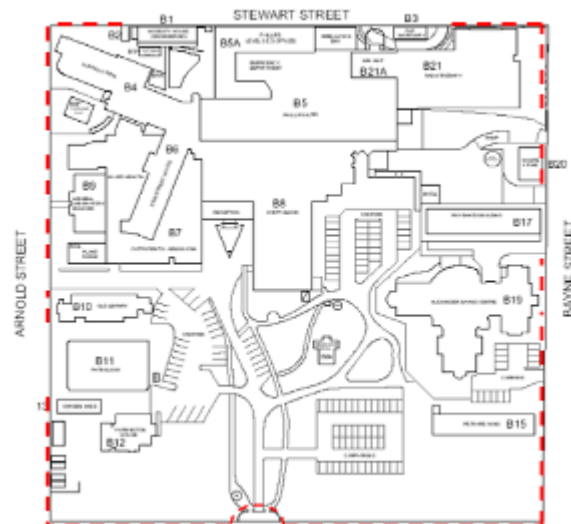


APPENDIX C DATA SHEETS

Boundary Fence, Walls and Main Entrance



Location: Lucan Street
Built: Timber fence & gates – by 1874
 Metal fence & gates – c.1885
 Brick walls – c.1880 -1910
Designer: Probably W.C. Vahland
Builder: Unknown



History:

An 1865 etching (State Library of Victoria – mp000879) shows what appears to be a boundary wall or fence running along the rear (Stewart Street) boundary of the site behind the hospital's Central Block. A timber fence and timber gates were definitely constructed along the front (Lucan Street) boundary by 1874 (refer to Bendigo Health photo below).

A bequest of £1,439 from George Drury in c.1885 funded the replacement of the timber fence and gates with the existing metal fence and entrance along Lucan Street. Vahland undoubtedly designed these elements. The brick boundary wall along Arnold Street was built at the same time as the Lunacy Ward in 1908. It is uncertain when the remaining boundary walls were built, but it was most likely between 1880 and 1910.

Description:

A decorative cast iron palisade fence, set into a bluestone base, extends along the Lucan Street boundary of the site. The main entrance into the site is located part way along this fence. The palisade fence curves inwards to form a semi-circular recess for the entrance, framed by two pairs of granite gate piers. The piers originally framed central iron gates, sufficiently wide for a horse-drawn vehicle, flanked by two smaller pedestrian gates. All the gates have since been removed, but the piers and fence are largely intact. Spherical gaslights, capped by a decorative crown, are mounted on cast iron posts at the junctions where the palisade fence curves in towards the main entrance.

Further granite piers are located at the corners of Lucan and Bayne Street, and Lucan and Arnold Streets. At these points the boundary treatment changes from the palisade fence to a brick wall. On both Bayne and Arnold Streets, it appears as though sections of brickwork have been cut out at the south-eastern ends of the wall, to improve visibility.

Where intact, the red brick wall has a sandstone plinth and is approximately 2 to 2.5 metres high. The wall is capped by a rendered roll-over top with embedded glass to deter intrusion. Simple brick buttresses are located at regular intervals on the inner face of the wall. The wall has been broken through and decapitated in a number of locations. It has also been rendered and painted in some sections along Arnold and Stewart Streets.

Along Bayne St there are sections removed at the corner with Lucan St (approx 9m), at the Pethard Wing Gates (approx 10m), in front of the Bayne Wing along the top of the wall, then again for a 12m wide truck opening and a smaller opening with new yellow brick piers.

Much of the wall is missing along Stewart St with only 37.3m near Bayne St being the most complete. A further short section is adjacent to Modesty House after which it reappears as a lowered wall to the Arnold St pier.

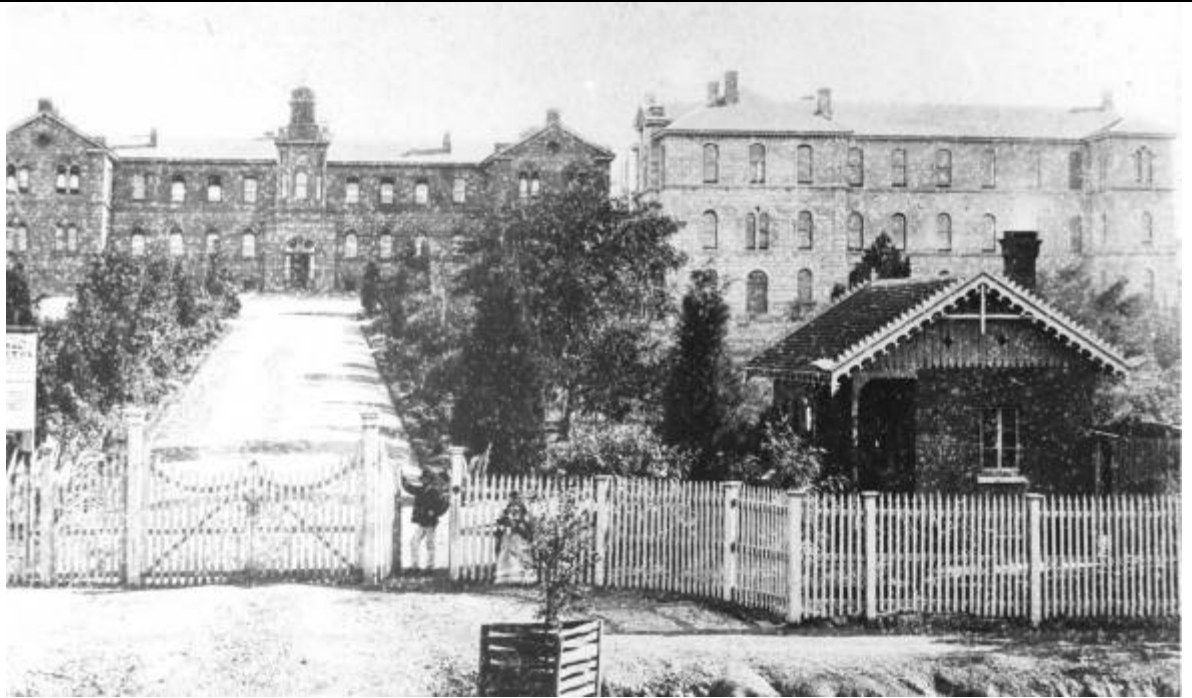
At the corner of Arnold and Stewart Streets the full height of the wall is missing (and the wall has been rendered) when the Kumala Wing was established. The wall has been lowered to 1m high in front of the Lansell Laboratory to act as a 1920s style fence, and then it is full height at the Old Library followed by another long section of missing wall (27.5m) in front of the Commonwealth Laboratory. A further 9m section is missing at the Lucan and Arnold St intersection and a door has been inserted along Arnold St to service the rear yard of the caretakers house.

Cultural Heritage Significance

Historic Theme: Development of the Bendigo Hospital

Primary significance to the major historic theme and to the site as part of the group of the structures which define the site's earliest history. Where the wall has been reduced in height and altered, it is of contributory significance.

The fence, wall and entrance are also important as elements which clearly define the location and alignment of the land held as a reserve for the purpose of the Hospital.



Main Entrance of the Bendigo Hospital, 1874. (Note the timber fence and gates)
Source: Bendigo Health Records



Undated photo of the Main Entrance.
Source: Bendigo Health Records



Main Entrance of the Bendigo Hospital, undated photograph. (Note that the gates are partly visible)
Source: Bendigo Health Records



Undated photo of the Lucan St fence, showing the frame for gaslights at the Main Entrance. The opalescent globe is missing from the lamp.
Source: State Library Victoria