

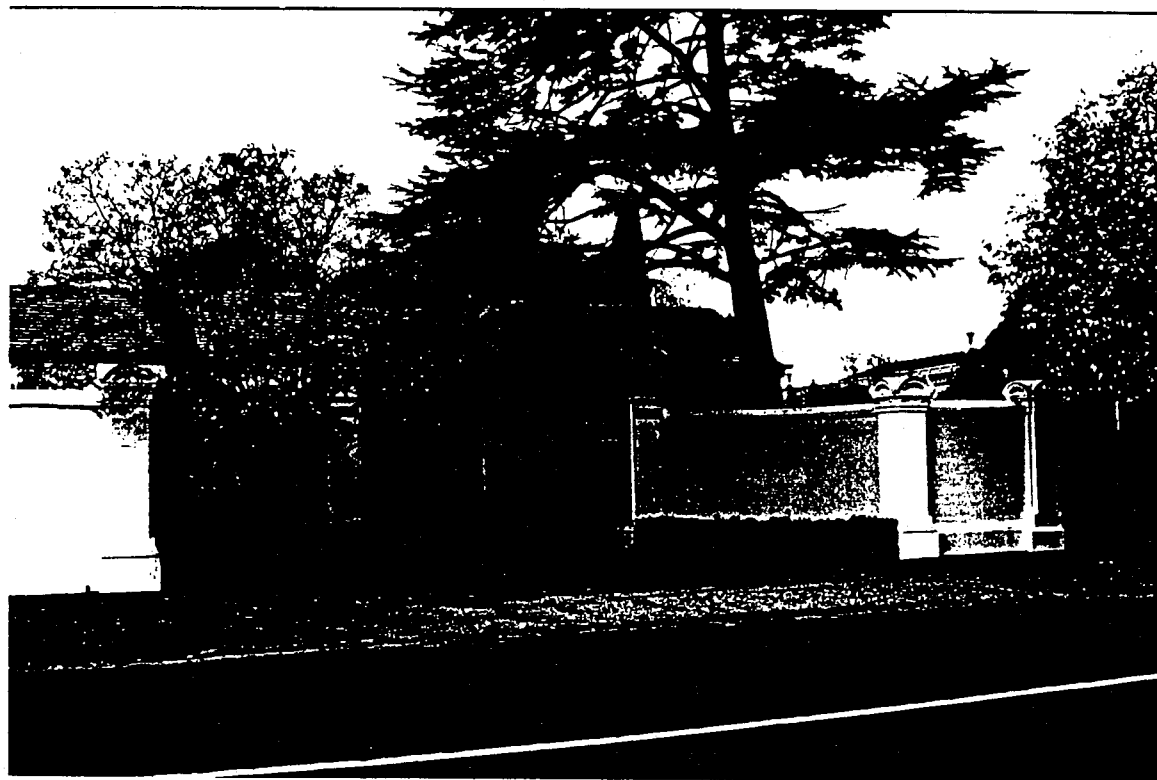
Oma (later Nareeb), 170 Kooyong Road (Gateway and fence only)

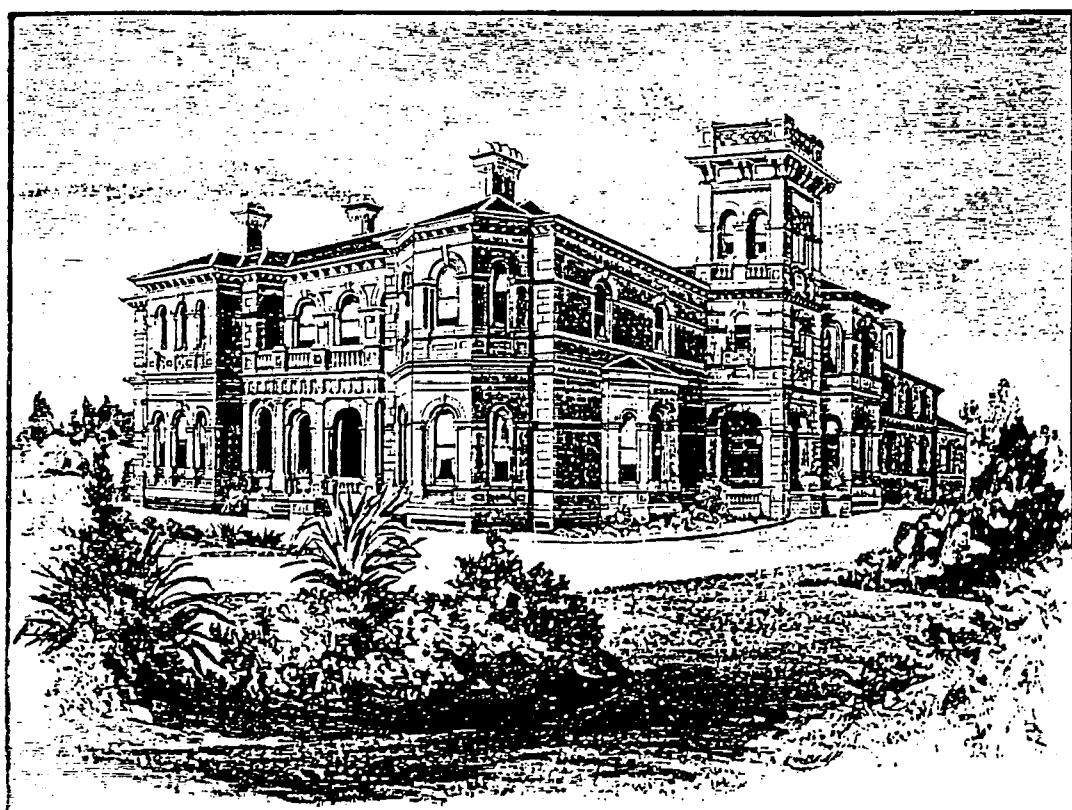
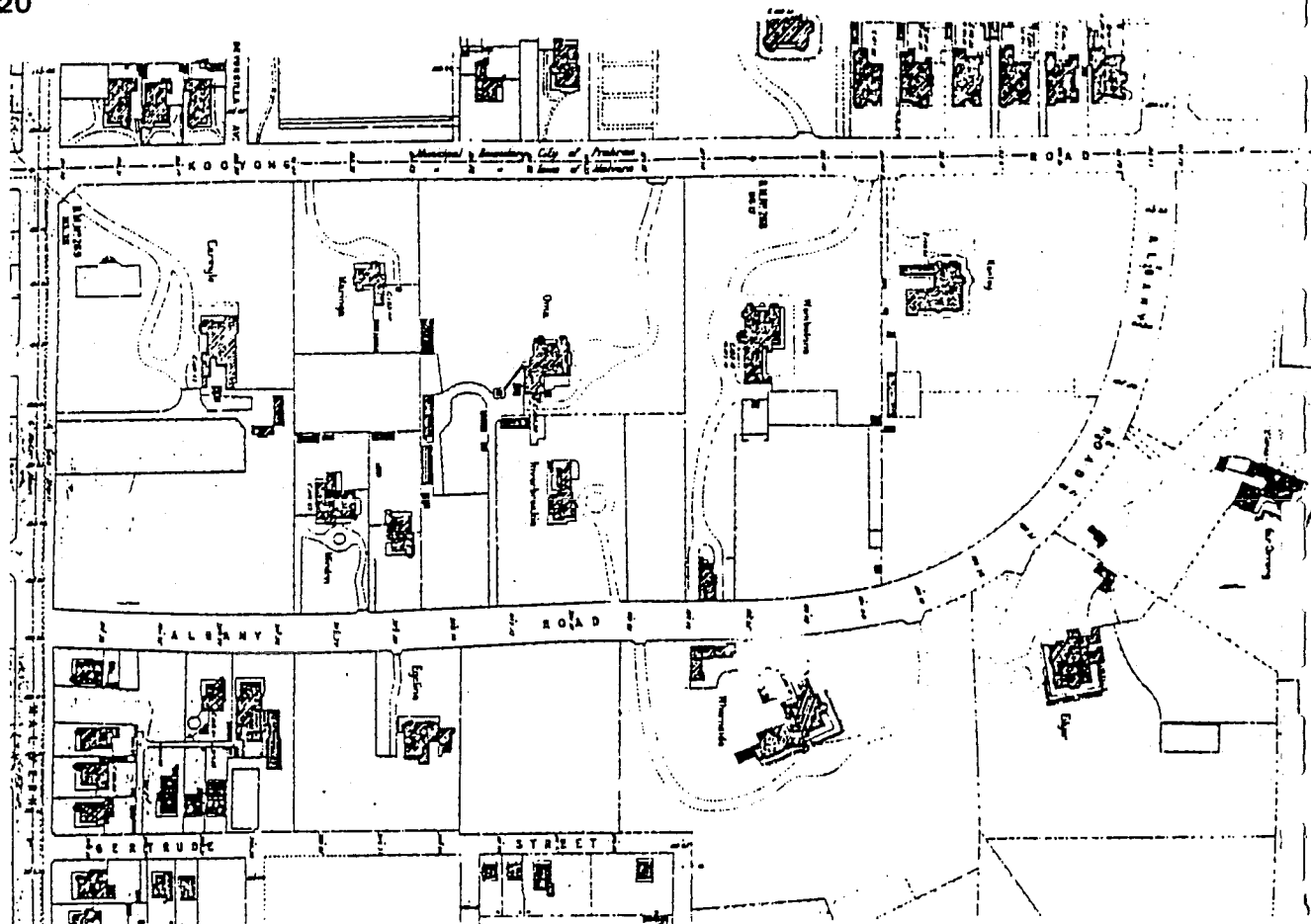
1902: MMBW plan shows the garden layout, gateway, plan of house and house name Oma (MMBW 160' to the inch plan 387 (59))

This structure once formed the entrance to Nareeb, the last grand mansion allotment in Kooyong Road. The massive two storied Italianate mansion was set behind a vast garden with many large trees. The property was subdivided and the residence demolished in the late 1960s. This brick section encompassed the gateway which had a recessed entry. It was constructed of face brick work with rendered cappings and originally had elaborate wrought iron gates. These are now relocated at D Gate at the Royal Botanic Gardens. In their place a period wrought iron gate served to close the gateway. These are of a different design to the original. The brickwork has been painted and small Castlemaine slate beds created within the recess. A single large tree survives from the original garden and a modern house is constructed almost immediately behind the gates.

This gateway in conjunction with 176 Kooyong Road provides a link with the massive mansion allotments of the nineteenth century that once extended between Toorak and Malvern Roads on the east side.

The former Oma gateway and fence is of local significance as it maintains a rare physical reminder of the many large mansion gardens formerly located in this area.





"WOMBALANO," TOORAK, THE RESIDENCE OF J. M. BRUCE, ESQ., J.P.