

11 Russell Street

Architects: Oakley & Parkes

1929: Plans prepared and lodged (Malvern Building Plan 10330)

1930: 'An Artistic Georgian House, The New Home of Mr & Mrs T H Roberts in Russell Street, Toorak' describes in an extended article with numerous illustrations in *Australian Home Beautiful*, June 1930, pp.9-12.

1947-59: Flockart, occupier (Sands & McDougall Directories)

This Georgian derived design features a simple hipped roof projecting forward to create a front wing. The house has simple window facings with shutters and a front porch with Tuscan columns. A simple wrought iron balustrade creates a deck above. The walls are finished in rough cast cement, rendered smooth for the classical detailing of the porch and banded work on the main building. The building appears to retain the original front timber gates and possibly fence within the ivy hedge. This building is apparently intact externally and possibly internally.

Refer to Appendix One for biographical details of architect.

11 Russell Street is of state significance as an important example of the work of this distinguished firm and has a number of similarities with their design for the Prime Minister's Lodge in Canberra, in particular the entry porch and iron balustrade above. The firm's domestic work is also reflected in the Calthorpe House in Canberra, now a house museum.



June 2, 1930.

THE AUSTRALIAN HOME BEAUTIFUL

AN ARTISTIC GEORGIAN HOUSE

The new home of Mr and Mrs T. H. Roberts in Russell Street, Toorak

By E. A. SHIELDS

IN this home, built in Russell Street, near Stonnington Place, Toorak, Messrs. Oakley and Parkes have achieved that most difficult ideal—a small house of character and dignity. There is nothing hasty or ill-considered here. The building is balanced and pleasing, and when the garden is well established will have that look of being part of its surroundings which is so desirable in any building.

In style it proves once again that the Georgian inspiration is a very happy one in Australia.

A photograph at this early stage cannot do justice to the exterior, but the pillared porch, and part of the graceful front door indicate pretty satisfactorily its character. The sand-finished walls are a warm cream, with green woodwork and shutters.

The interior conveys to the visitor no feeling of being in a small house. Excellent use has been made of every foot of space with no sense of crowding. The hall carries a sense of comfort and welcome and hospitality, with the staircase rising directly opposite the front door.

To the right are a large lounge, long for its width, with a wide, low fireplace of herring-bone brick, and a small den. This room, with pretty windows, built-in bookshelves, and good fireplace, is a very intimate corner.

To the left is the dining-room, with windows to the north and east. From this lead the servery and kitchen, which are marvels of convenience. The maid's room, laundry and coal cellar are reached by outside doors, but are under the one roof. Labor saving appliances reduce work to a minimum.

Upstairs, above the lounge, and almost the same shape, is the principal bedroom. This room has the same generous windows north and west as the lounge, also, in an angle formed by a large built-in wardrobe, a window looking east. Surely a cheery room! There is a second bedroom, over the dining-room, and a particularly well equipped bathroom completes the compact upper storey.

The interior decoration and furnishing are thoroughly in accord with the Architect's ideal. Plain carpets, plain linens for curtains, hand-blocked linens for loose covers, used with the specially made mahogany furniture, give a restful whole.

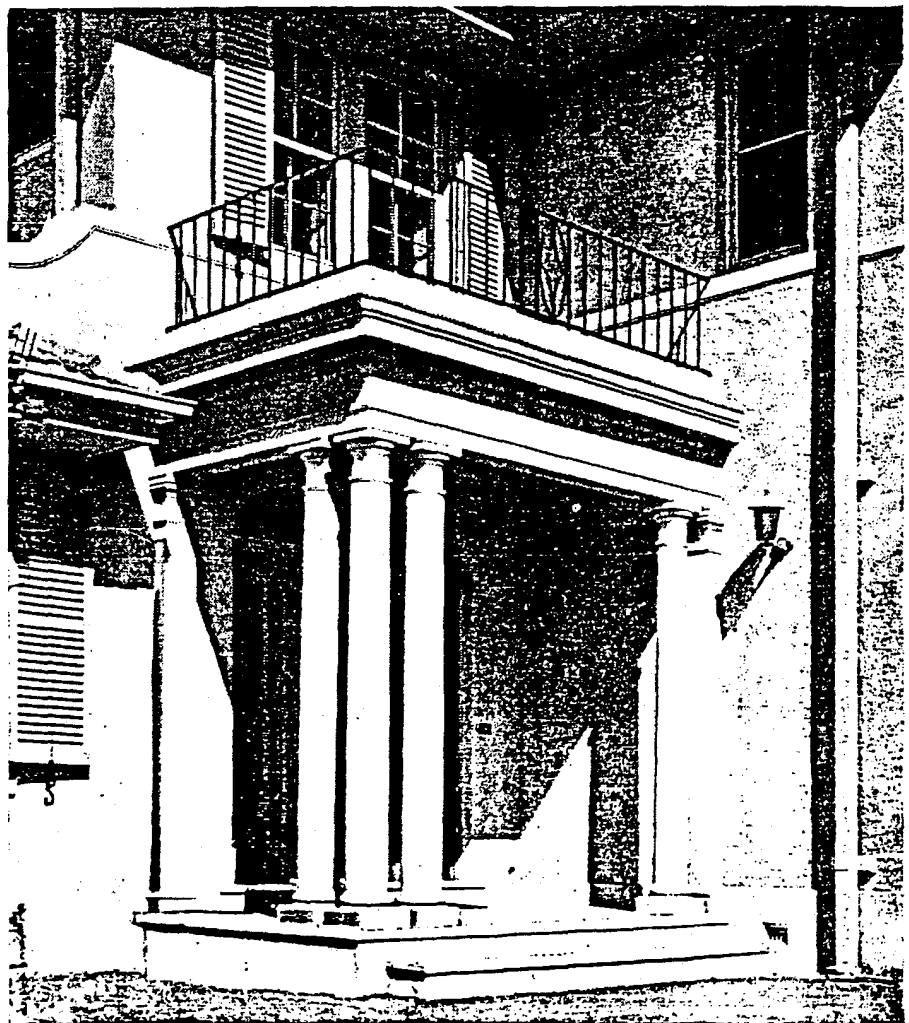
The house throughout, except for the bathroom and the kitchen, is kept to one color scheme, always a good plan in dealing with small houses. The plaster finished walls are flat oil painted to a deep parchment shade, whilst the ceilings are a warm ivory. There is a slight difference in the woodwork, which downstairs is dark oak and upstairs a heavy cream.

The bathroom is painted primrose yellow and eggshell blue, with tiled floor, and dado showing the same colors, and with gay curtains of yellow waterproof silk.

The kitchen is very colorful in delicious tones of green and yellow, with the gayest of curtains in modern check cretonne.

Throughout the house the curtains are hung from below a casing of woodwork and made to draw close at night. The lighting, too, is from wall sconces.

It is a house that will mellow with age and be more pleasing with every year that passes.



The well-proportioned Georgian porch and graceful front door indicate the general character of the exterior. The house is plaster finished with green shutters and woodwork.