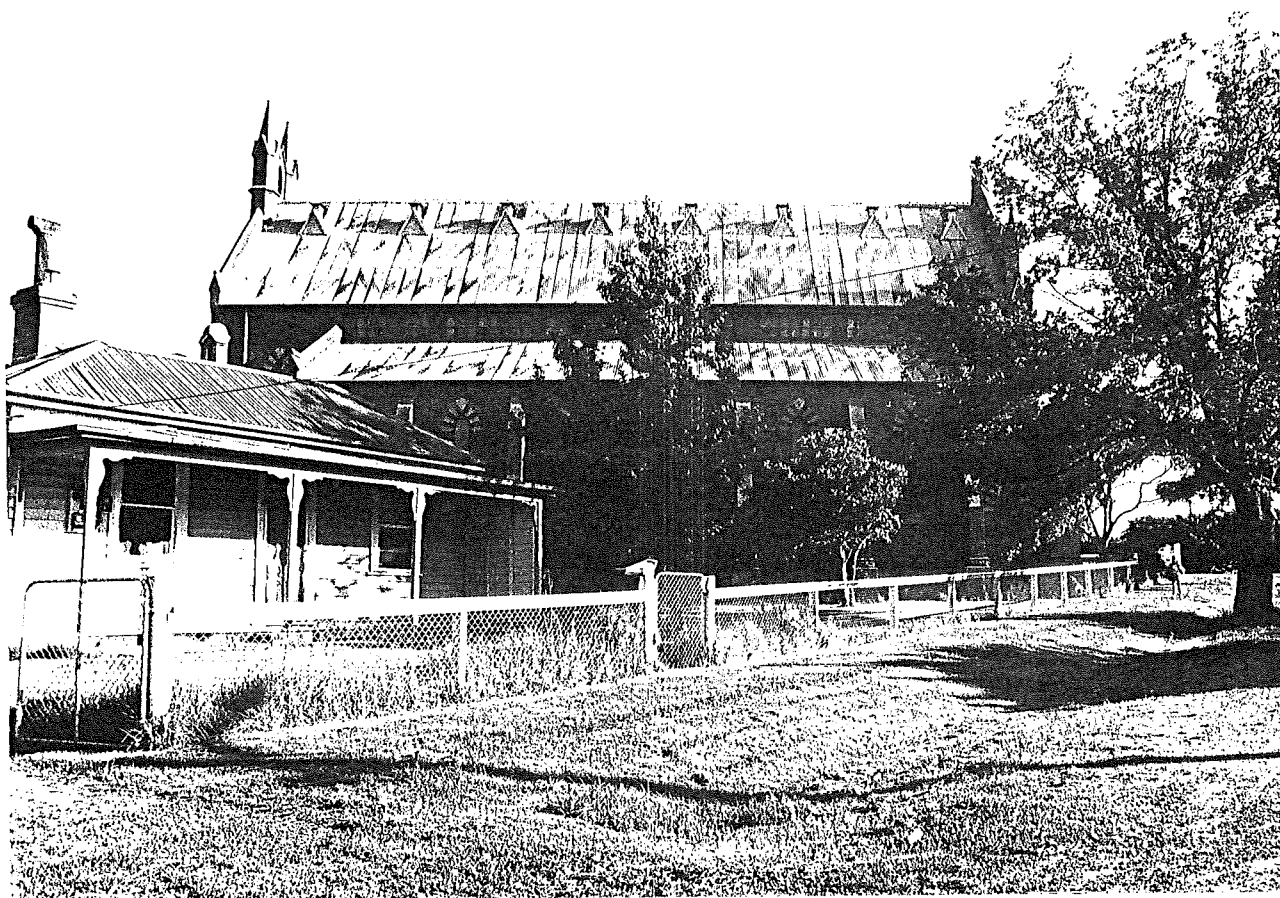


## PRECINCT 5.03 LONG GULLY COMMERCIAL, RESIDENTIAL & CIVIC



**3-12**

*The Wilson Street church and housing group, showing the differences in scale of church to residence, allowing it visual and social prominence within the area.*

### **LGA: BENDIGO CITY MAP: 6.08**

#### **Contributory Streets**

Arms Street  
Bennett Street  
Creeth Street  
Duncan Street  
Eaglehawk Road  
Havilah Road  
William Street  
Wilson Street

#### **Description**

The area is characterized by mainly Victorian and Edwardian-era housing dotted along the Eaglehawk Road as it descends into Sparrowhawk gully where there is a concentration of commercial uses, including shops and hotels.

Today's Long Gully commercial sites include Truscott's now much altered store in Havilah Road, with his much grander two-storey residence beside it, built in 1900.<sup>1</sup> Another group lies south of the Rose of Australia, including

<sup>1</sup> Butcher & Flanders, p.106



Photo 155

PREMISES OF A. CONNELL, LONG GULLY, BENDIGO.

(Hodkinson, Photo)

### 3-13

*Connell's bakery, near the corner of Williams Street, in what was then Bond Street (Eaglehawk Road) and not far from Koch's house. (BCL)*

the former James Grenfell (now N Grenfell's) butcher's shop (169) and the neighbouring bookshop (171), once J Beckensall's hairdresser and tobacconist's shop.<sup>1</sup>

To the east of Eaglehawk Road there is a residential precinct again characterized by Victorian-era and Edwardian housing, either painted timber or face brick, interspersed with more recent construction. The focus of this area is the Uniting Church, facing Wilson Street, and a group of old residences nearby, particularly in Daly Street where the streetscape formed with the church is important.

View Hill Lodge, at 2 Creeth Street, is another visual focus of the area which ends an important residential streetscape in Wilson Street and links with the church. Wilson Street also has remnant elm planting. Another dominant element is 2 Havilah Road, the two-storey brick residence located close to Eaglehawk Road and hence on the high point of the residential part of the precinct.

Verges are in many cases unformed, with basalt pitcher kerbs as in Alms Street. Otherwise, concrete kerb and channel is used. Brick drains exist in William Street.

### Key Sites

St. Matthew's Sunday School, 153 Eaglehawk Road, 1896  
 Truscott's Kilhallen, 2 Havilah Road, 1900  
 Eva's Latchley Cottage, 8 Havilah Road, 1871  
 Long Gully Methodist Churches, Wilson Street, 1865-1877  
 Koch's Falkland House, former, 194 Eaglehawk Road, 1870

Cambourne, later View Hill Lodge, 2 Creeth Street, 1899 (renovation)  
St. Matthew's Anglican Church, 155 Eaglehawk Road, 1883  
French's Manchester Arms Hotel 136 Eaglehawk Road 1866-68

**Significance**

Each of the former hamlets can be recognized as derivative from the still visible gold workings adjoining, with essential components to any self-contained community such as churches for the denominations, a school, the hotels and former shops and one foundry which all combine to provide the sense of gold town life and provide in some cases individually significant architectural works.

Long Gully is one of the best known mining precincts in Bendigo and with substantial elements remaining from the settlements which grew up around mining, including many individually important public and private sites. The site of the Ironbark Chinese village is an important place as are the several hotels and other community structures. The clustering of these buildings in small precincts near to major mining areas was characteristic of the Bendigo field from the 1870s onwards.