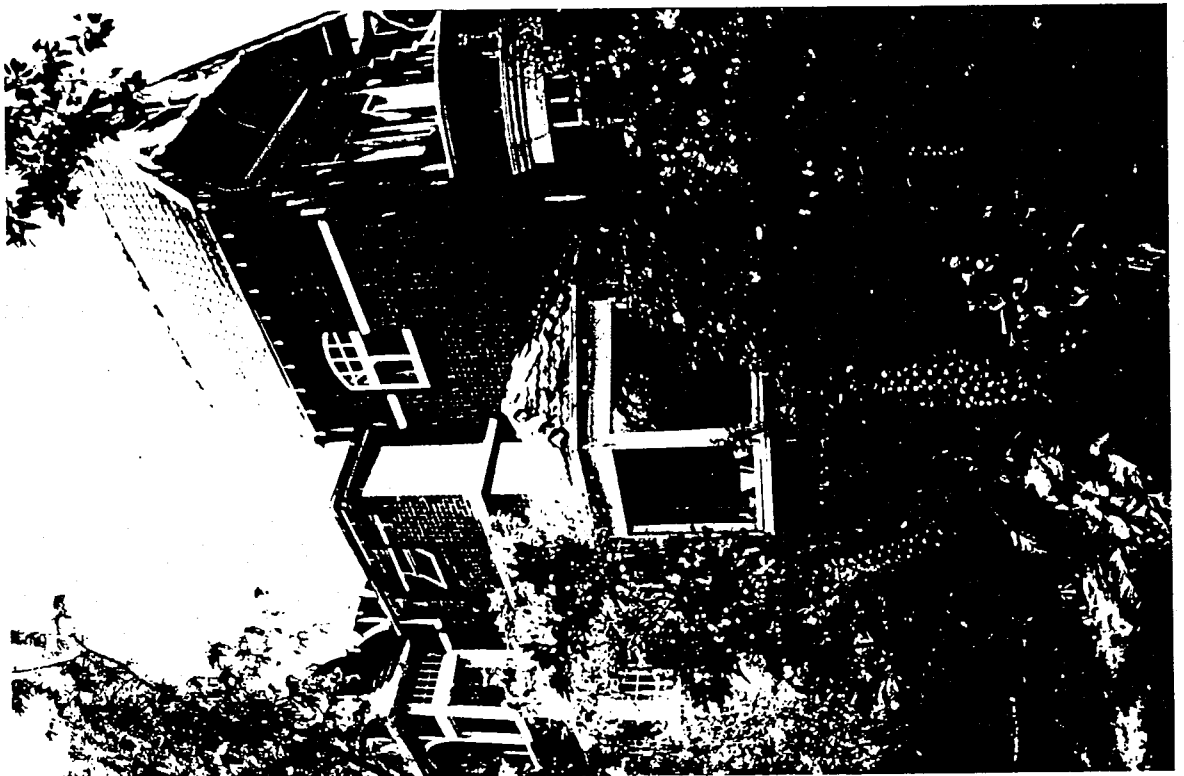


Chesterfield, 6 Mayfield Avenue

Architect: Phillip E Treeby

- 1891: Illustration appeared in *The Building And Engineering Journal*, described as 'House at Toorak for A E Wallis Esq. Phillip E Treeby Architect 421 Collins St. Boxshall & Leonard Builders (May 9, 1891)
- 1891: *Building, Engineering and Mining Journal*, 9 May 1891, p.179 - Philip E Treeby, 421 Collins St. House at Toorak for A E Wallis, Esq. now nearing completion. Perspective (*Architects Index*)
- 1902: 40' to the inch plan of 'Chesterfield' (MMBW Drainage Plan 177?) shows the residence facing Chesterfield Avenue on the equivalent of twelve small allotments, with the service wing and outbuildings facing Mayfield Avenue.
- 1947: Syme, George Robin Adlington. Hon Llbr. Roy. A'Asian Coll. of Surg.
- 1950: Syme, G.R, Surgeon Roy. Melb. Hosp. (Who's Who)

A two storey Queen Anne style house, designed after the manner of the architects, Ussher & Kemp, with typical steeply-pitched Marseilles tiled roofs, outrigger half-timbered gable ends, red brick walls, and turned timber verandah posts. The building is dominated by the bright orange unglazed terracotta tiles with terracotta ridging and massive slender chimneys with rendered strap work. The top panel of the verandah has a small geometric grid pattern in timber and a deep beam beneath. There is a giant arch extending through this grid on the north elevation, formerly of a more detailed design. (1) Atypical elements include the west elevation's stepped label-cum-string mould and centred multi-pane six-light casement window. The window has a pattern on the side reminiscent of the balcony detail. 6 Mayfield Avenue also has an extended kitchen wing at the rear which has an open latticed section facing the street and a secondary chimney. The building is essentially intact seen from the street although there are numerous minor alterations to some details. Now closed-in, virtually on all sides, by later (related) additions and (unrelated) new development hard on the east (once main elevation), the house's architectural qualities are hard to perceive. Mature trees survive from the garden, including a Morton Bay Fig, Hoop pine, Monterey Cypress and *Cordyline australis*.



Refer to Appendix One for biographical details of architect.

Chesterfield is of state significance as an accomplished and early Queen Anne design. The unusual detailing and strong building and roof forms contribute to the pioneering character of this residence.

1 Two early photographs held by Malvern Historical Society Inc.

