



Australian Home Beautiful
May 1, 1937 — Page 27

"Churston" — THE DELIGHTFUL HOME OF
DR. & MRS J. RINGLAND ANDERSON

Described in detail overleaf by MARGARET CLAPKE—Photographs by DUNCAN WADE.

'Churston'

In Linlithgow Road Toorak, Dr Ringland Anderson's residence, commands a superb view over the ranges round from the Dandenongs to Mount Macedon.

Architect Marcus Martin, F.R.A.I.A.

A paved drive-way sweeping from one wrought iron gate to the other, and under a cantilever hood a wrought iron door opening into a shallow porch ... 'Churston' was planned so as to make the utmost of the magnificent view: huge windows unhampered by curtains look out to north, east and west, and deep recesses with windows on all three sides give the beholder an uninterrupted view across the tops of houses, over the hills, and as far as the eye can see.

Opposite the entrance door a huge fireplace below a beautiful maple mantelpiece makes one long for winter nights ...

... Edna Walling designed the garden. The house is close to the road and most of the land lies behind it. To the east of the house a lawn is broken by haphazard stepping-stones, shrubs and flower beds. A flight of stone steps leads up to the front drive. Behind a colourful rock garden an old Morton Bay fig tree overlooks an en-tout-cas tennis court; the tree is surrounded by paving and a rock seat is sheltered by its leaves.

The garden is cleverly terraced, for on a still higher level than the pool itself there is a grass tennis court. Between them runs a paved walk leading to a grove of hawthorn bushes, where hydrangeas, daffodils, and lily of the valley bloom in their season. ...

... "Churston" is large, but not too large; it has every comfort and yet is quite free from the atmosphere of oppressive luxury. It is obviously the home of people who love light and air and sunshine.

The garden and the house are a unity, so much so that one scarcely knows where one begins and the other ends. The place indeed provides evidence of the intelligent co-operation of building architect and landscape architect: the total effect is most harmonious and dignified. Too often the garden is merely an irrelevant frill round the house. The whole place has been imaginatively planned, and every little corner used to advantage, and used in such a way that nothing is obtrusive.

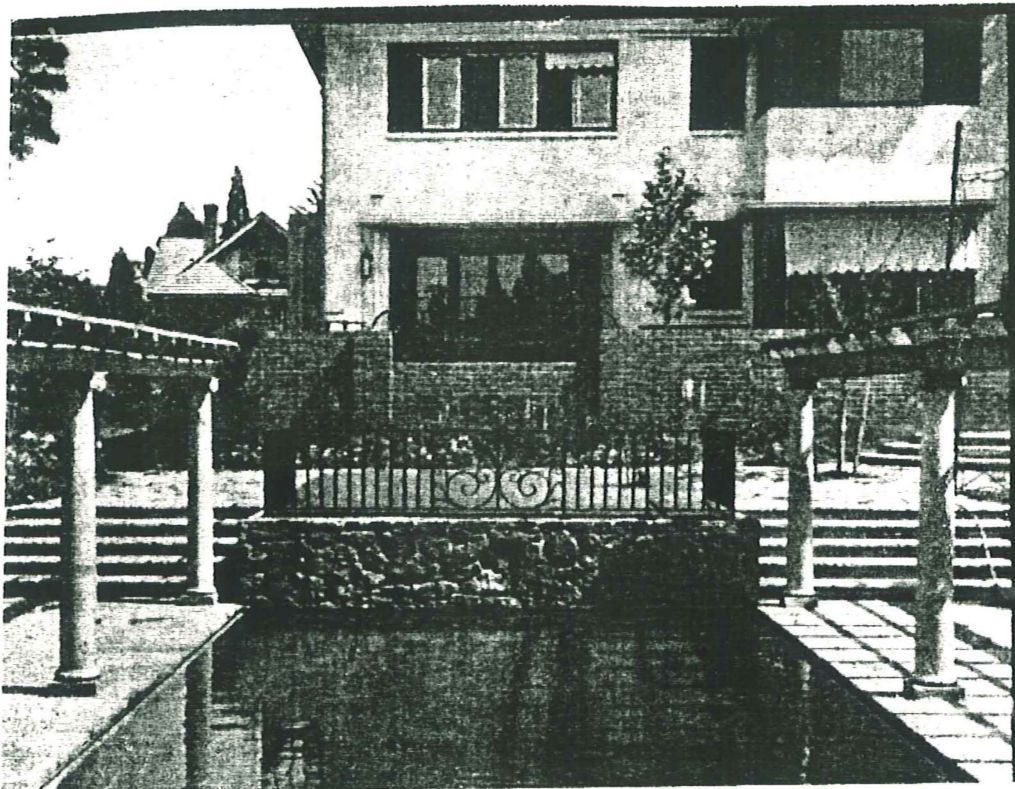
In front a rustic fence runs from the road to the house, cutting off the garage. On the garden side of the fence a Banyan pine shades the house and provides a background for an hydrangea bed.

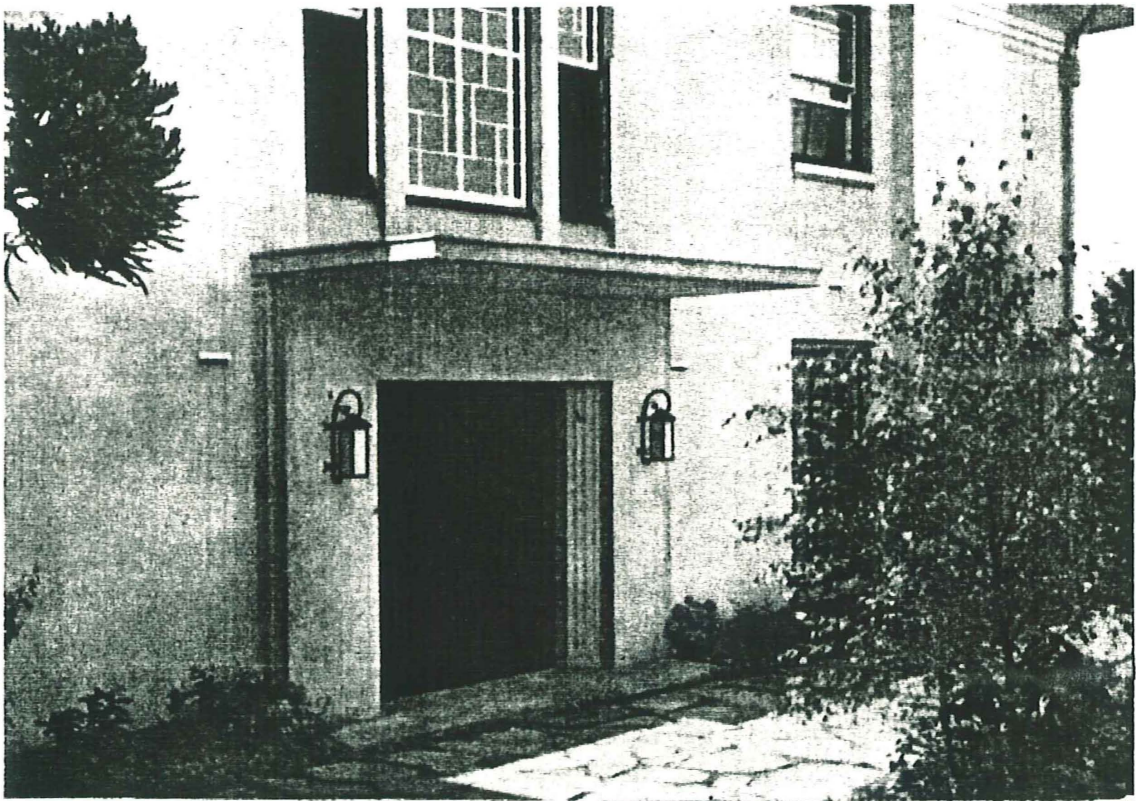
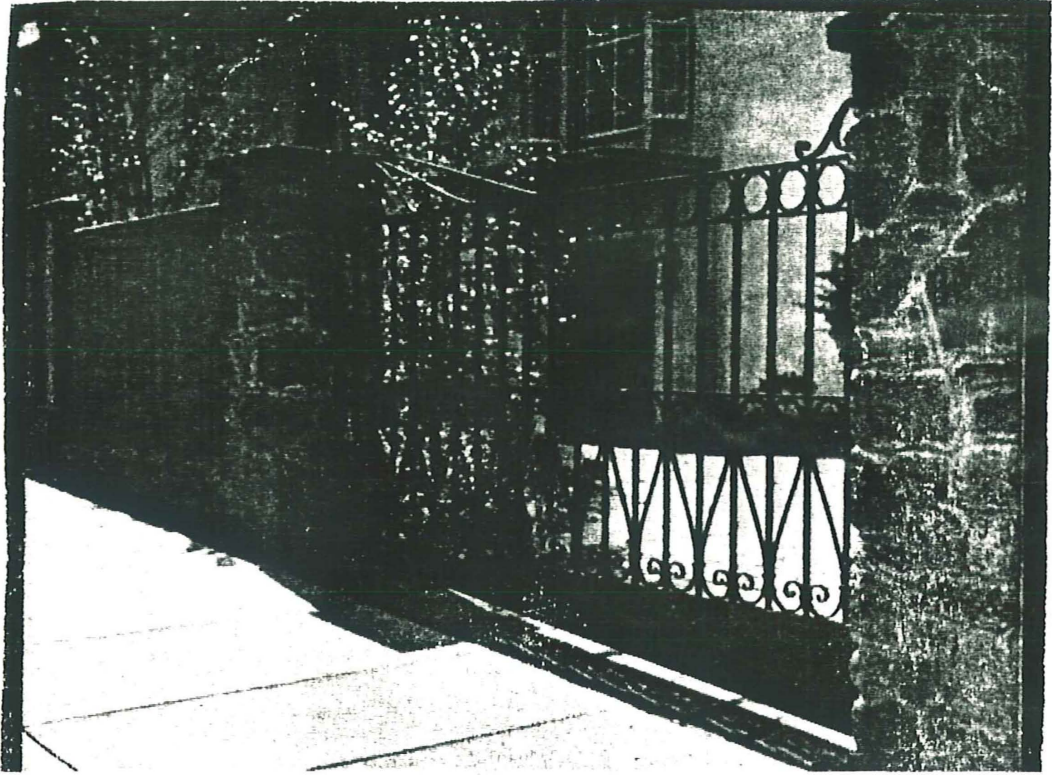
One leaves "Churston" regretfully and cannot forbear to take a last a last peep through the wrought iron gate before passing down the road.

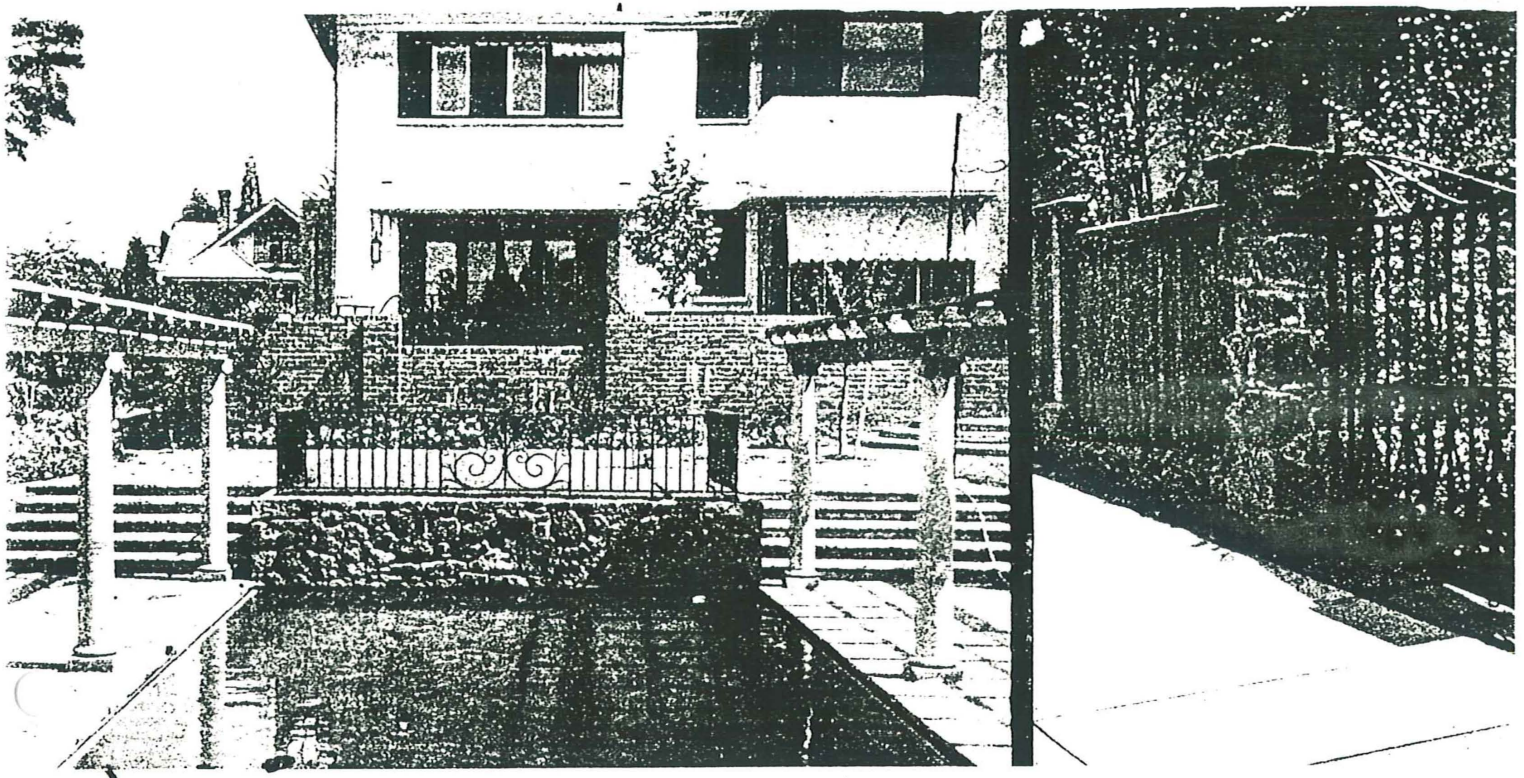
1 On a terrace higher than the court lies the blue swimming pool seen above - left - set in a Broadford stone walk. There are long pergolas on either side: in the future these will be covered by wisteria and clematis. Above the pool on a still higher terrace a grass tennis court provides for summer sport. Beyond the pool a paved walk runs down between picturesque flower beds. ... The pool is divided from the grass lawn in front of it by a wrought-iron balustrade.

2 Through the wrought iron gateway shown above one can just see the front door below a cantilever slab. Above the porch a large window lets in the south wind so that on hot summer nights cool breezes go circulating through the house. A paved drive runs past the house to the other gate.

3 The porch, shown below, is a very nice example of modern simplicity.







"Churston"

IN LINLITHGOW ROAD, TOORAK, DR. RINGLAND ANDERSON'S RESIDENCE COMMANDS A SUPERB VIEW OVER THE RANGES ROUND FROM THE DANDENONGS TO MOUNT MACEDON.

Architect. MARCUS MARTIN. F.R.A.I.A.

THE illustration on the preceding page shows the spacious hall panelled in maple with its plain maple-wood entrance door and floors of matching hardwood. A fine staircase runs round the hall in the form of a gallery and increases its spaciousness, while a large window let in above the front door, and divided by glazing bars into small panes in a geometric pattern, lights the landing and hall. The hanging lantern is made from medieval stained glass picked up in Amiens Cathedral by Dr. Anderson after the shelling.

PAVED DRIVE-WAY sweeping from one wrought iron gate to the other, and under a cantilever hood a wrought iron door opening into a shallow porch . . . "Churston" was planned so as to make the utmost of the magnificent view: huge windows unhampered by curtains look out to north, east and west, and deep recesses with windows on all three sides give the beholder an uninterrupted view across the tops of houses, over the hills, and as far as the eye can see.

Opposite the entrance door a huge fireplace below a beautiful maple mantelpiece makes one long for winter nights. To the right double doors lead into the "big" room (pictured overleaf). The walls of this room are cream, and make a perfect background for a fine Japanese painting on silk. On the east window hang dull green curtains while double doors that slide back into the wall open out on to an airy room, beyond which a paved terrace overlooks the garden some eight or ten feet below.

In the diningroom the marvellous view seen through the very large window is reflected in an old oval mirror hanging on the opposite wall. The window is set in a deep recess similar to that seen in the accompanying illustration of the lounge. Below the mirror stands a mahogany side table. The dining table is mahogany and Victorian; the chairs upholstered in brocade, are of the same period.

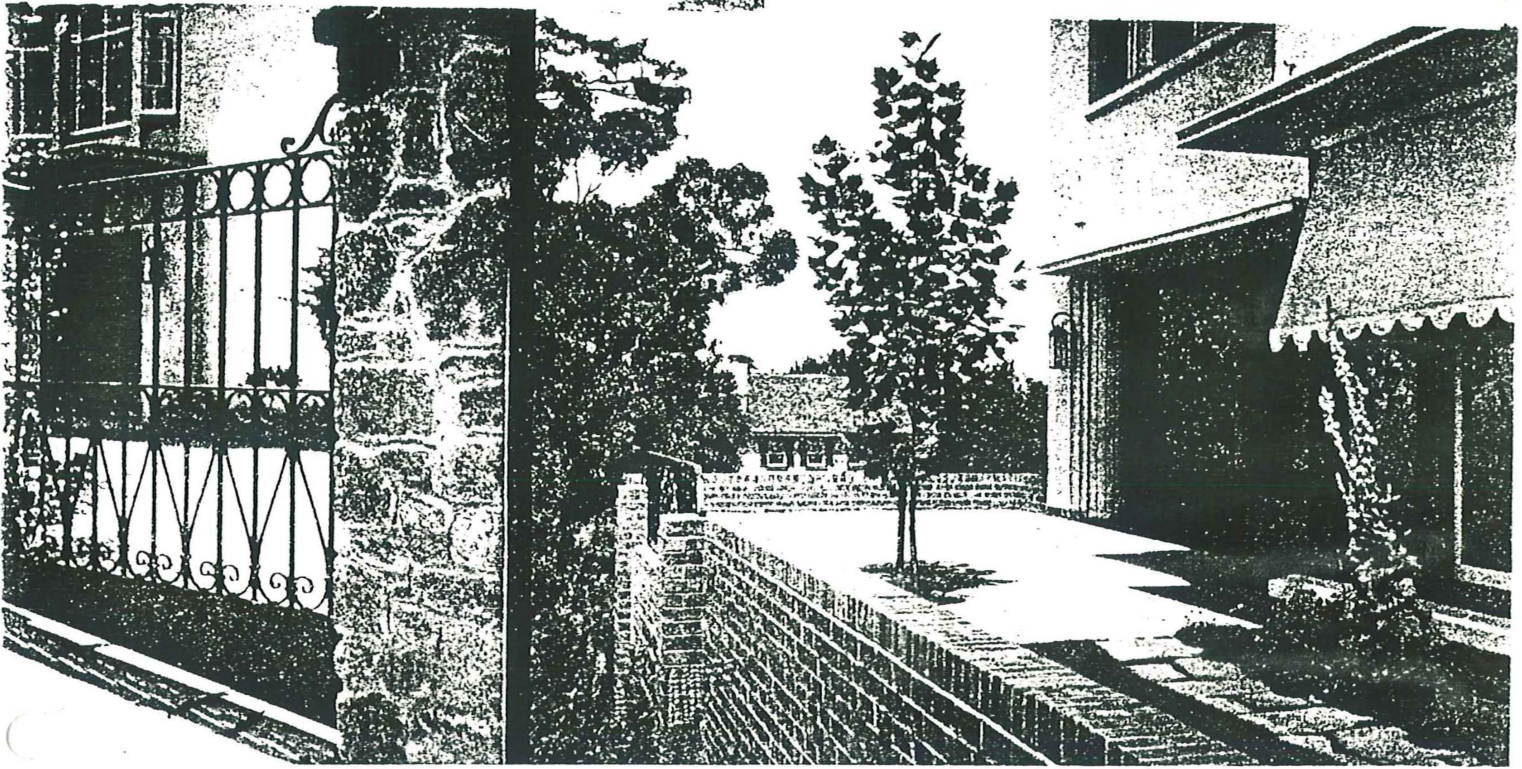
Against the east wall a pair of antique silver candlesticks stands on an early Vic-

torian mahogany sideboard. A large charming and dignified atmosphere of

Into the bedrooms six beautiful beds covered in a sale room by Mrs. Anderson. In Miss Anderson's room there is an antique bureau which a lover of furniture could not pass up. Spanish mahogany desk adds to the room. Capacious built-in cupboards display have racks for shoes, rows of drawers. The doors are finely grained maple. Buff deep cream and the other buff. There is porcelain, a pedestal basin to match, and a shower behind a plate glass door.

Edna Walling designed the garden. The road and most of the land lies behind it. The lawn is broken by haphazard stepping stones. A flight of stone steps leads up to a colorful rock garden an old Moreton Bay *en-tout-cas* tennis court; the tree is sheltered by its leaves.

The garden is cleverly terraced. More than the pool itself there is a grass terrace. It runs a paved walk leading to a grove of thorn bushes, where hydrangeas, dahlias and lily of the valley bloom in their



ON A TERRACE higher than the court lies the blue swimming pool seen above—left—set in a Broadford stone walk. There are long pergolas on either side: in the future these will be covered by wistaria and clematis. Above the pool on a still higher terrace a grass tennis court provides for summer sport. Beyond the pool a paved walk runs down between picturesque flower beds of tall mixed flowers to a grove of hawthorn trees running behind the courts. Under these there are growing

hydrangeas, and, in season, daffodils and lily-of-the-valley flower in the shade. The pool is divided from the grass lawn in front of it by a wrought-iron balustrade. An old silky oak shelters the east corner of the lawn, and a jacaranda has just been planted on the opposite side so that its brilliant purple-blue flowers will be reflected in the pool. The widening curves of some stone steps lead up on to the terrace which overlooks the whole garden and the view beyond it.

THROUGH the wrought iron gateway shown above one can just see the front door below a cantilever slab. Above the porch a large window lets in the south wind so that on hot summer nights cool breezes go circulating through the house. A paved drive runs past the house to the other gate.

dining room, and a scarlet oak planted on the lawn to the east of the terrace should grow up and meet it overhead. A paved path runs from the steps by the swimming pool to the top of the terrace. From the terrace a door opens into the lounge.

THE PORCH, shown below, is a very nice example of modern simplicity. The unique lantern already referred to and also seen in the large picture of the entrance hall is reinforced by a pair of exterior lanterns flanking the doorway.

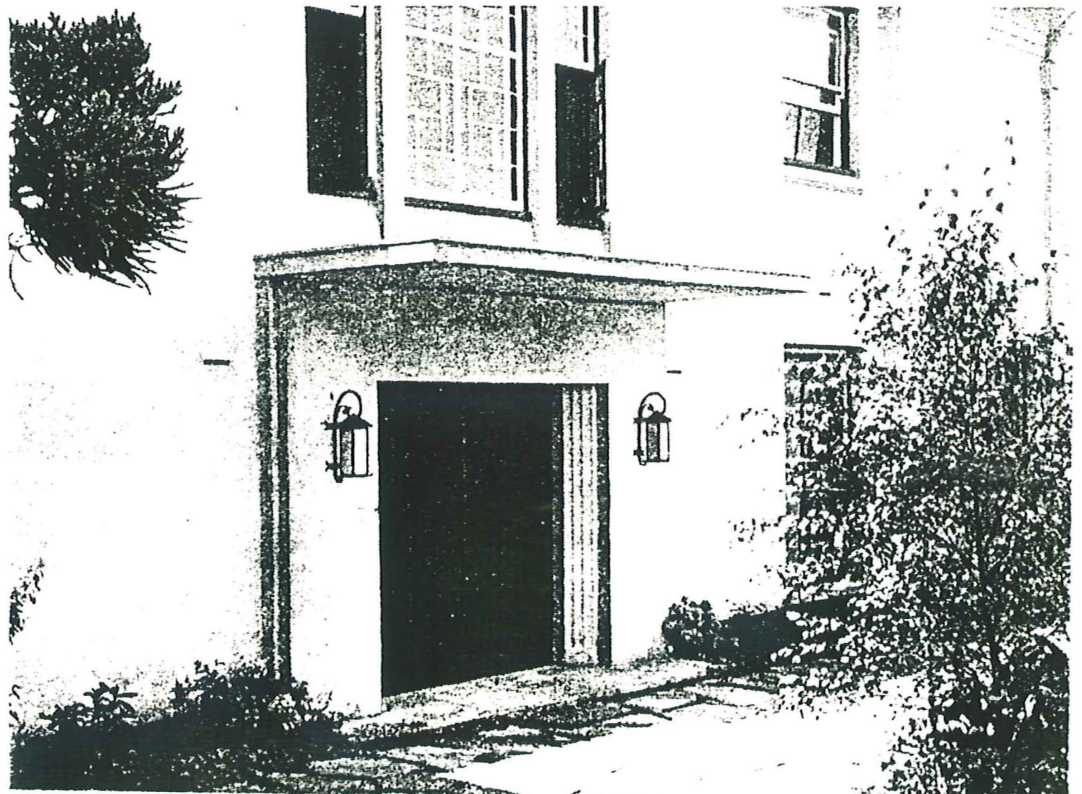
ON THE TERRACE (top right), many feet above the level ground a plane tree is growing which will give shelter to the lounge and the

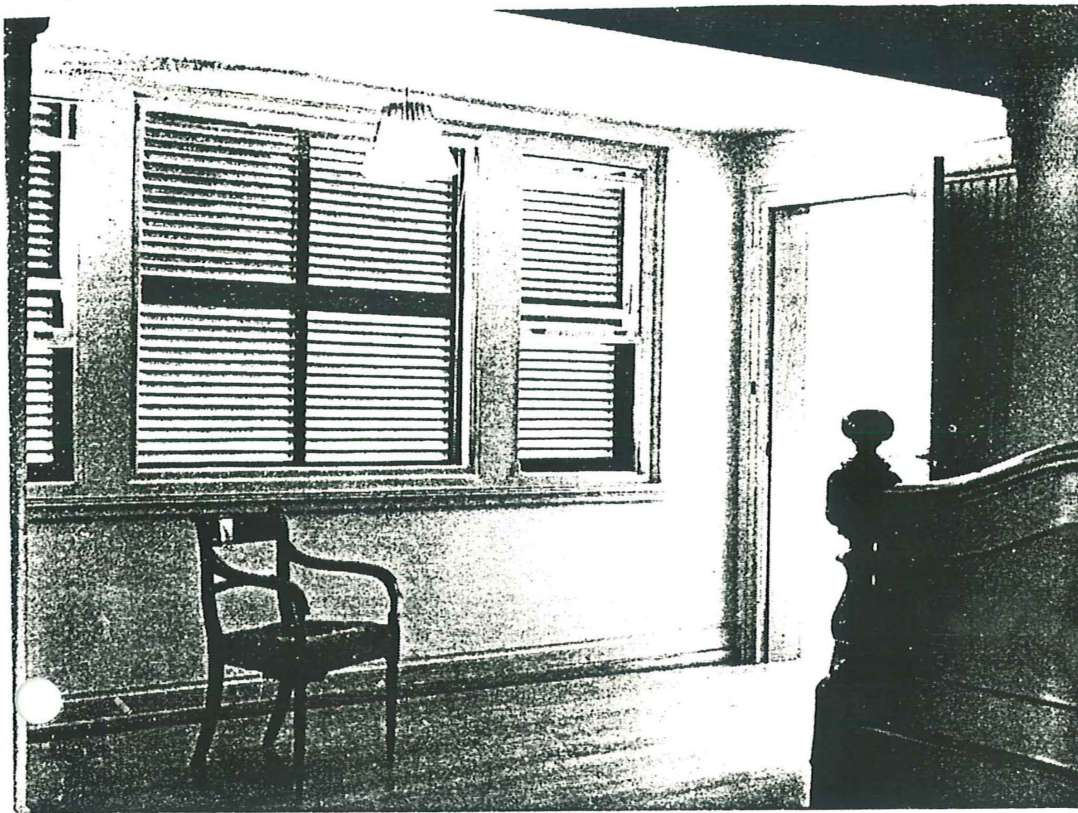
Persian rug completes the room.

on-backed chairs, dis-
n, have found their way.
visit eighteenth century
not help coveting. A lovely
distinction of the dressing
expense with wardrobes. They
rs and ample hanging space.
Both bathrooms are tiled, one
e are sunken baths in tinted
heated chromium towel rails
or.

The house is close to the
t. To the east of the house a
g-stones, shrubs and flower
o to the front drive. Behind
n Bay fig tree overlooks an
surrounded by paving and a

for on a still higher level
nis court. Between them
of haw-
dodils,
season.





Australian Home Beautiful
May 1, 1937 — Page 30

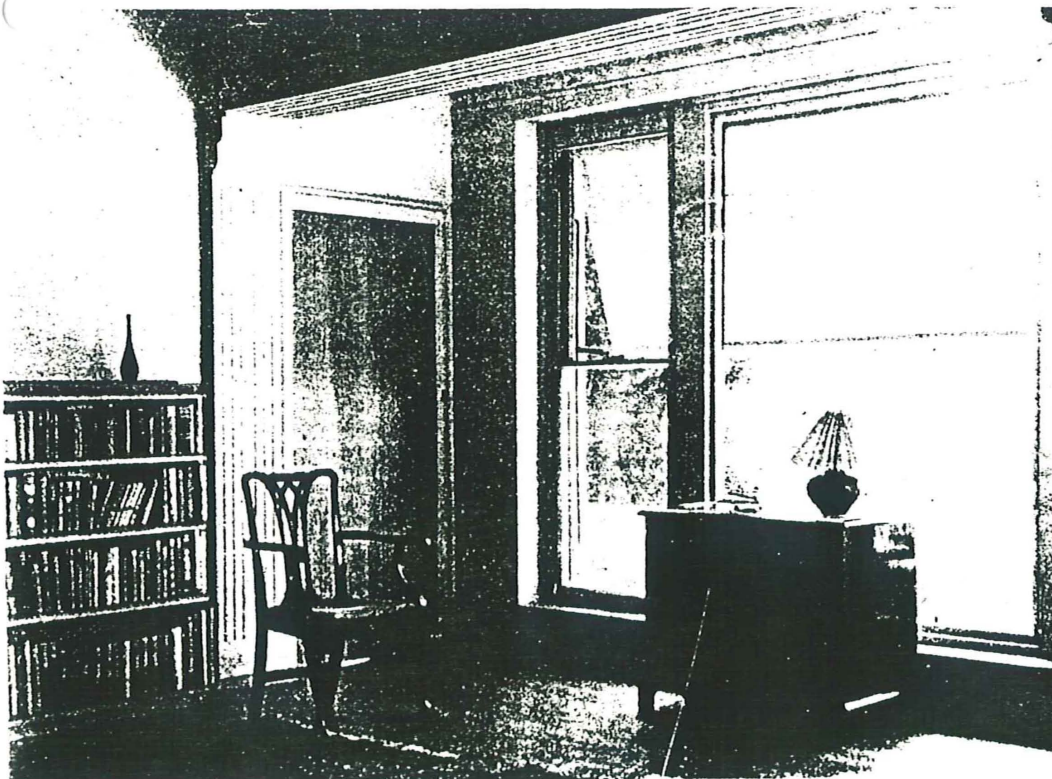
Four bedrooms open off the gallery-landing, and, as pictured at left, all of them are lavishly fitted with windows that let in sun, air and a lovely view. Sliding shutters keep out a very hot sun and the spring wire blinds are proof against flies. Two of the bedrooms open on to a sun balcony that is used as a winter sitting room and play room. There are bookshelves, a table, a machine; and huge windows that face the north. On some of the windows the shutters let down into the wall, on others they slide back from the windows and rest against the outside wall.

"Churston"

(CONTINUED)

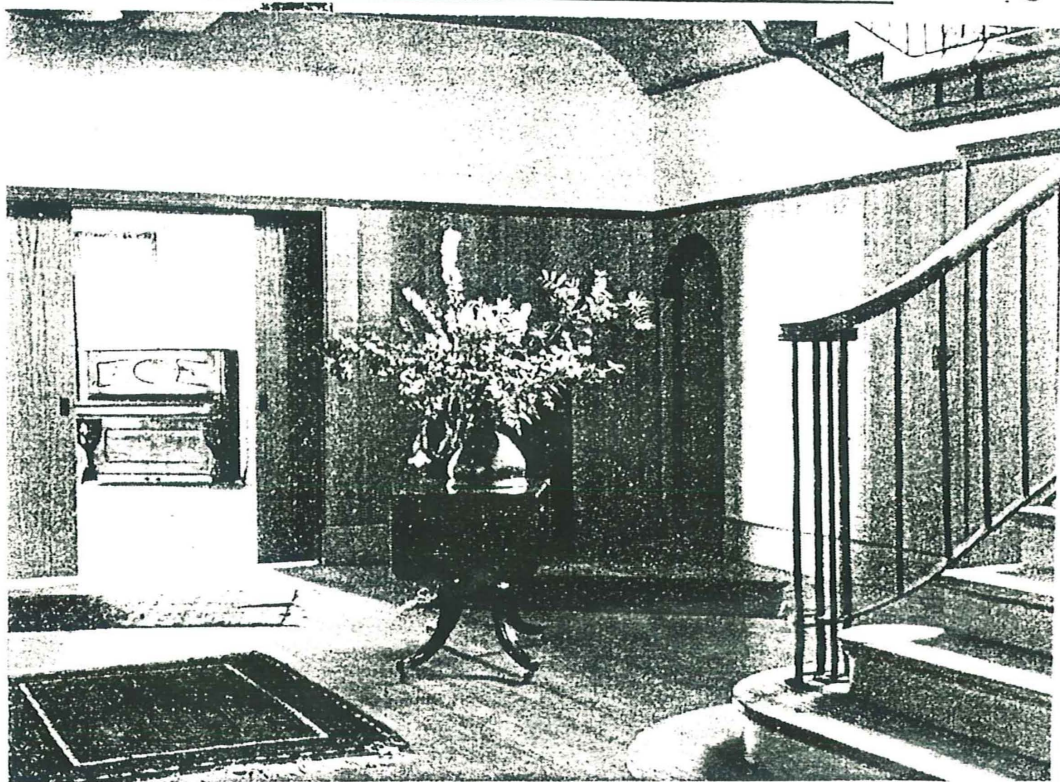
EVERY comfort has been considered in the planning of "Churston." The maids' quarters are separated from the rest of the upper storey by a swing door. Two bedrooms open on to a balcony, the bathroom is spacious, and a staircase leads down to the kitchen regions. A separate sitting room, comfortably furnished, opens from the kitchen.

Upstairs one finds something a little unusual but altogether admirable in the form of a small laundry that facilitates the washing of stockings and light lingerie; it is equipped with an electric iron, a covered chromium sink, drying lines, and a deep built-in cupboard. Downstairs—pursuing the same line of thought—a small kitchen enables Mrs. Anderson to carry out experiments in cooking without interrupting the daily work of the maids. Nearby a food lift saves carrying trays up for breakfast in bed.



These huge windows of the Lounge look out over the hills as far as the eye can see. A door leads through to the Dining Room, where the windows continue in an unbroken line. Persian rugs on the plain floor are again a feature of the room, and the walls are cream. There is a built-in bookcase extending nearly the whole length of the west wall, and in the deep window recess stands a mahogany desk in Regency style. The windows reach practically to the floor and end in broad sills. Between the book-case and the windows a single door opens into the Dining Room. A lounge suite in linen repeats the red and blues of the rugs.

The big room (right) is sparsely furnished with a piano, some chairs and a ping-pong table. The oval-topped door in the picture leads into a cloak room, and sliding doors enable the "big" room and the hall to be opened up into one huge ball room. On the hardwood floor there are some beautiful Persian rugs. The stairs are uncarpeted. This room is also used for cinematographic shows.



A large cloak room tiled in cream tonings opens from the hall and looks out on to the garden through a wrought iron grid that matches the gates and the front door. And a shower room built near the pool saves swimmers from going upstairs for a bath after the swim. Under the terrace a play room has been made for little Miss Anderson. It is provided with a sink, a plug for an electric iron, a shower, and some shelves, so that this lucky little lady can develop housekeeping talents she may possess and save having to discover them later in life.

The housemaids' pantry is large enough for two or more people to work in comfort. There is a chromium sink, large cupboards and glassed-in shelves. In the kitchen cupboards ventilated from under the house ensure that food is kept in a cool and fresh atmosphere, and the safe has a door through which the milkman can put the milk straight out of the heat and dust. A door opens into the garage just by the kitchen, and the tradesmen's entrance is quite separate from the rest of the garden, and at no distance from the road.

"Churston" is large, but not too large; it has every comfort and yet is quite free from the atmosphere of oppressive luxury. It is obviously the home of people who love light and air and sunshine.

The garden and the house are a unity, so much so that one scarcely knows where one begins and the other ends. The place indeed provides evidence of the intelligent co-operation of building architect and landscape architect; the total effect is most harmonious and dignified. Too often the garden is merely an irrelevant frill round the house. The whole place has been imaginatively planned, and every little corner used to advantage, and used in such a way that nothing is obtrusive.

In front a rustic fence runs from the road to the house, cutting off the garage. On the garden side of the fence a Banyan pine shades the house and provides a background for an hydrangea bed.

One leaves "Churston" regretfully and cannot forbear to take a last peep through the wrought iron gate before passing down the road.

As one passes the turn in the stairs, a beautiful hall cupboard of Indian design catches the eye: beautiful lacy carving that has to be seen to be believed. It comes from Lady Stawell's collection. The lovely carving makes a delicate pattern against the light walls when the doors are open. Halfway up the stairs hangs another Japanese painting. Through the archway a door leads to the servants' quarters.

