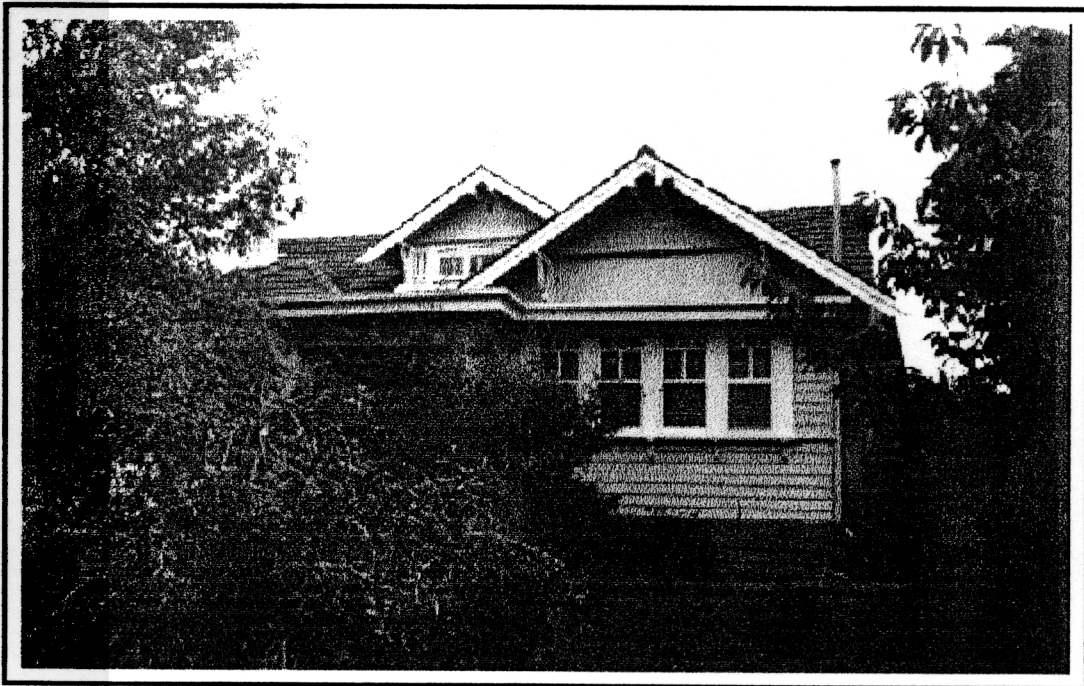
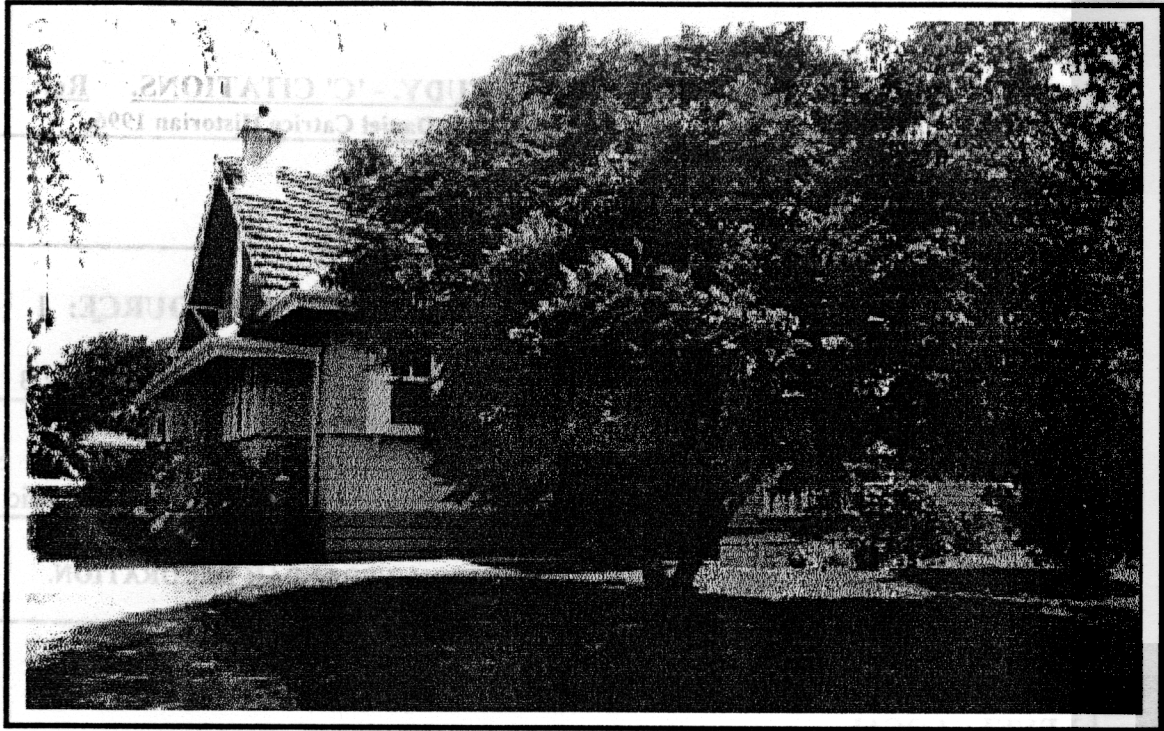


**NEWTOWN URBAN CONSERVATION STUDY. - 'C' CITATIONS. Ref: 14**  
Richard Peterson Architect & Conservation Consultant. Daniel Catrice Historian 1996.

<b>NAME:</b> —
<b>ADDRESS:</b> 99 Aberdeen Street.
<b>USE:</b> House.
<b>SIGNIFICANT DATE:</b> — <b>CONSTRUCTION DATE:</b> 1922 <b>SOURCE:</b> 1
<b>DESIGNER:</b> — <b>BUILDER:</b> —
<b>CRITERIA:</b> H1, Ar1, 3. <b>HISTORIC THEME:</b> 2.3
<b>DESCRIPTION:</b> <b>STYLE:</b> Bungalow <b>STORIES:</b> 2 <b>DETACHED.</b>
<b>MATERIALS:</b> <b>WALLS</b> Timber <b>ROOF</b> Tc tiles <b>STRUCTURE</b> Stud
<b>CONDITION:</b> Excellent. <b>INTACTNESS:</b> Excellent. <b>THREATS:</b> Traffic.
<b>SIGNIFICANT INTACT ELEMENTS:</b> FORM. PORCH. ROOF FORM. GABLE DECORATION. VERANDAH DECORATION. BALLUSTRADE. CHIMNEYS. WINDOWS. CONTEXT: No. 103.
<b>SIGNIFICANCE:</b> <b>TYPE:</b> HISTORICAL. ARCHITECTURAL. <b>LEVEL:</b> LOCAL.
<b>DESIGNATION EXISTING:</b> PLANNING SCHEME.
<b>RECOMMENDED CONTROL:</b> PLANNING SCHEME.
<b>GRID REF:</b> — <b>SURVEY:</b> RP <b>DATE:</b> 25.1.96 <b>NEGS:</b> 1.17&18





PROPERTY OF THE NATIONAL ARCHIVES  
DATE: 05/19/88 NEG#: 117618



**HISTORY:** This timber bungalow was built in 1922 for John Meredith. By 1928, Archie Knight, a butcher, was owner and occupier of the house. Albert Moden and his family lived here from the early 1930s. In 1970, Mrs. H.E. Moden was listed as owner.<sup>1</sup>

**VISUAL DESCRIPTION:** An interesting complex timber bungalow, with a broad gable roof across, unglazed terra-cotta Marseilles tiles and some fine decorative details. The right bay projects as a gable. Upper gables have shingles and the roof is supported on projecting purlins and brackets. Barges are unusually decorated with small pairs of blocks. There is a central attic gable, with side decorative panels reminiscent of the work of Charles Rennie Mackintosh (1868-1928) and with a shallow arched transom over its low window. Beneath is the central porch, with an almost flat roof. The balustrade and posts have similar Mackintosh motifs. A minor gable projects at right rear, and at left projects a minor hip, embracing the chimney. This has flat hips?? With corbels. Windows are set forward on coved brackets with leadlight upper sashes.

**SIGNIFICANCE:** A characteristic and relatively intact attic Californian Bungalow built in 1922. It is architecturally significant locally as a representative design in the Bungalow style distinguished by some details reminiscent of the work of Charles Rennie Mackintosh.

It is historically significant locally as a representative embodiment of the way of life in Newtown between the wars.

**INTACTNESS:** Excellent.

**CONDITIONS & THREATS:** Excellent. Traffic vibration and pollution.

---

<sup>1</sup> *City of Newtown and Chilwell Ratebooks*, 1922-23, 1927-28, 1931-32.  
*Sands & McDougall Directory of Victoria*, 1946, 1956, 1961, 1970.