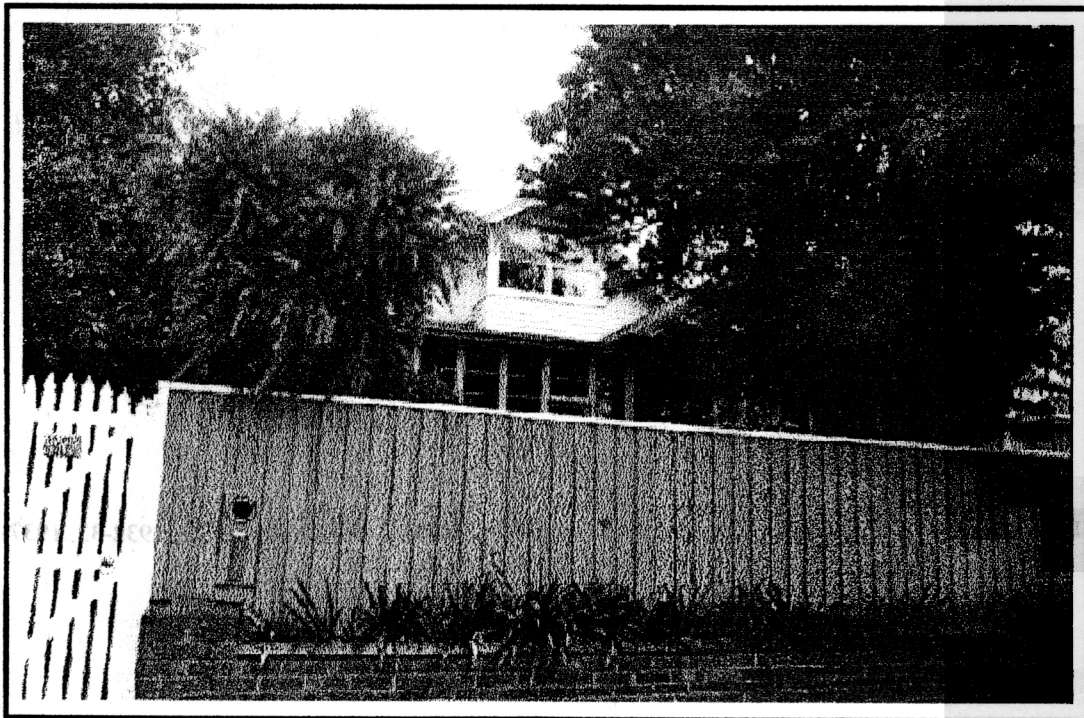


NEWTOWN URBAN CONSERVATION STUDY. - 'C' CITATIONS. Ref: 8
Richard Peterson Architect & Conservation Consultant. Daniel Catrice Historian 1996.

NAME: —			
ADDRESS: 83 Aberdeen Street.			
USE: House.		SOURCE: 1	
CONSTRUCTION DATE: 1911		SOURCE: Visual & 1	
ALTERATIONS/ADDITIONS:		DATE: c1940?	SOURCE:
DESIGNER: —		BUILDER: —	SOURCE:
CRITERIA: H1, Ar1.		HISTORIC THEME: 2.3	
DESCRIPTION:		STYLE: Bungalow	STORIES: 2 DETACHED.
MATERIALS:		WALLS Brick	ROOF Metal tiles STRUCTURE Lb.
CONDITION: Good.		INTACTNESS: Reasonable.	THREATS: Traffic.
SIGNIFICANT INTACT ELEMENTS: FORM. ROOF FORM. GABLE DECORATION. CHIMNEYS.			
SIGNIFICANCE:			
TYPE: HISTORICAL. ARCHITECTURAL.			
LEVEL: LOCAL.			
DESIGNATION EXISTING: PLANNING SCHEME.			
RECOMMENDED CONTROL: PLANNING SCHEME.			
GRID REF:		SURVEY: RP	DATE: 25.1.96 NEGS: 1.11



HISTORY: In 1909 E.E. Hendy subdivided a block of land into two portions, selling the larger parcel to Frederick Annear, a cabinetmaker. Annear built a five-roomed brick house on the site in 1911 and remained in the house until the 1930s. His wife, Sarah then assumed ownership. By the 1950s the house had passed to the Spencer family who made alterations and were still living here in the 1970s.¹

VISUAL DESCRIPTION: A red brick early bungalow with a broad gable facing. The left bay is set forward. Its upper gable has ogee brackets with mock shingles and a rectangular vent with its head and cill supported on brackets. It jettys on a group of five coved brackets, over a rectangular bay with a balcony. The main gable contains an attic, which is fronted with another rectangular bay. Its gambrel roof is supported on ogee brackets and clad with mock shingles. There is a skillion verandah in the angle.

SIGNIFICANCE: A characteristic elevated large Edwardian house built in 1911. It is architecturally significant locally as a characteristic, if conservative, Edwardian style house and as one of a group of 12 relatively intact and most varied in Aberdeen Street.

It is significant historically as a representative embodiment of the way of life in Edwardian Newtown.

INTACTNESS: The verandah and the attic balcony are infilled. The timber over brick front fence with its picket gate are not appropriate.

CONDITIONS & THREATS: Very good. Traffic vibration and pollution.

¹ *City of Newtown and Chilwell Ratebooks*, 1909-11, 1915-16, 1922-23, 1927-28, 1932-33, 1937-38. *Sands & McDougall Directory*, 1946, 1956, 1961, 1970.