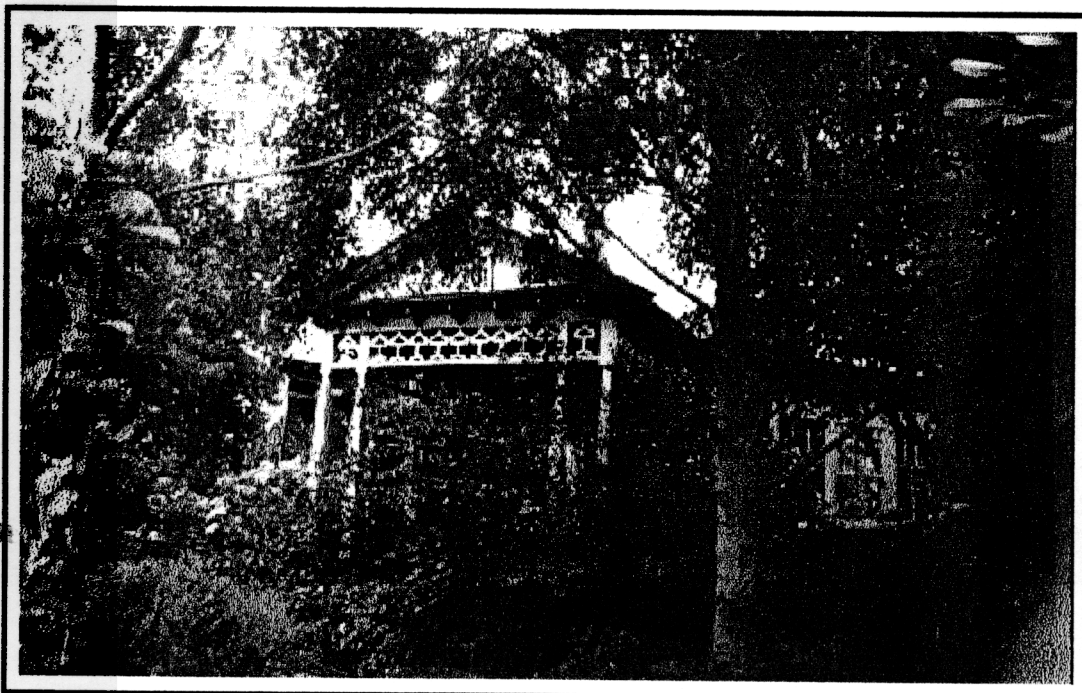
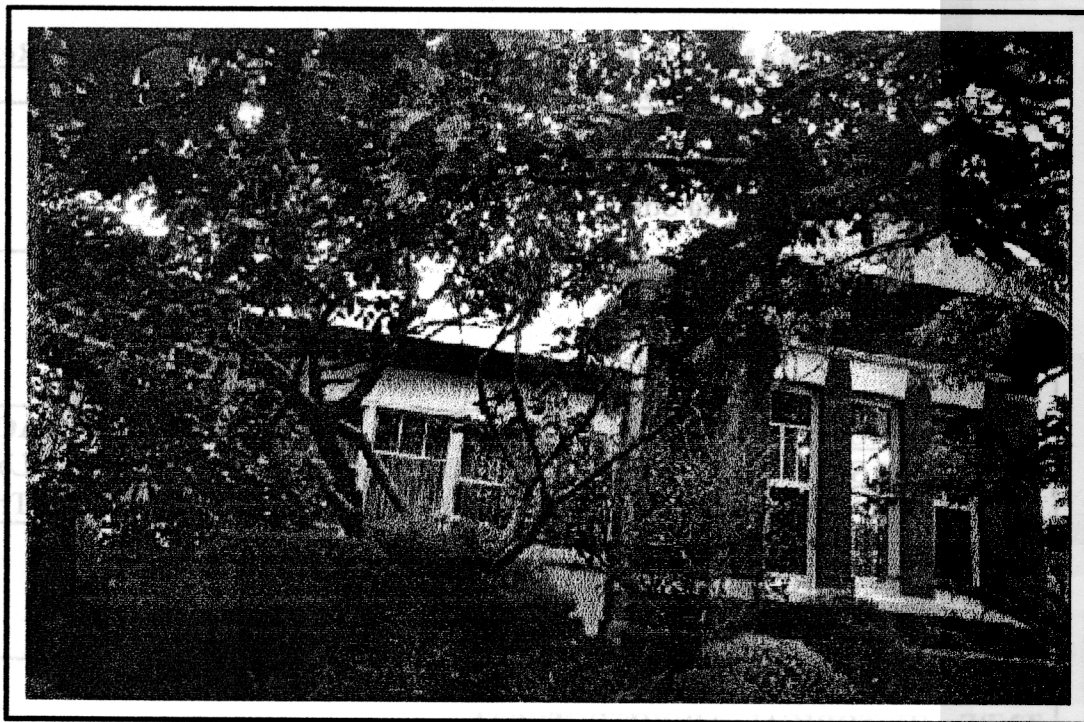


NEWTOWN URBAN CONSERVATION STUDY. - 'C' CITATIONS. **Ref: 4**
Richard Peterson Architect & Conservation Consultant. Daniel Catrice Historian 1996.

NAME: —	
PREVIOUS NAME: Welcompu, Allowah.	
ADDRESS: 75 Aberdeen Street.	
USE: House.	
CONSTRUCTION DATE: 1908	SOURCE: 1
DESIGNER: —	BUILDER: —
CRITERIA: H1, Ar1.	HISTORIC THEME:
DESCRIPTION: STYLE: Edwardian	STORIES: 1 DETACHED.
MATERIALS: WALLS Brick ROOF Iron	STRUCTURE Lb.
CONDITION: Very good.	INTACTNESS: Good. THREATS: Traffic.
SIGNIFICANT INTACT ELEMENTS: FORM. VERANDAH. ROOF FORM. GABLE DECORATION. *CHIMNEYS. WALL DECORATION. WINDOWS. PAINTWORK SCHEME. UNPAINTED FINISH. CONTEXT: Nos. 69-73, 77-81, 85, 87, 93-97.	
SIGNIFICANCE: TYPE: HISTORICAL. ARCHITECTURAL. LEVEL: LOCAL.	
DESIGNATION EXISTING: PLANNING SCHEME. RECOMMENDED CONTROL: PLANNING SCHEME.	
GRID REF:	SURVEY: RP DATE: 25.1.96 NEGS: 1.7





HISTORY: In 1907 a block of fenced land was sold by Mary Ann Hooper to Thomas Clarke, gentleman, who had just constructed the timber house next door at 73 Aberdeen Street. Henry Hooper, presumably Mary's husband, had recently sold a block at 71 Aberdeen Street. The following year Clarke built a seven-roomed brick house which he named Welcompu. By 1916, the house now called Allowah was owned by retired farmer, Charles Piper. Piper lived here until the late 1940s or early 1950s, and was succeeded by his wife, Christina.¹

VISUAL DESCRIPTION: A red brick triple-fronted, hip-roofed Edwardian house, with unusual pylon chimneys with cement mouldings and pots. Right front and left side rear bays project as gables. The verandah returns around the angle, with an angled gable and canted rectangular belvedere at the corner. Gables are supported on fine fretwork brackets and with the valence as a sinuous leaf Art Nouveau pattern frieze. The upper gables are timbered with roughcast pattern pressed metal cladding, jettying on fretwork brackets. Windows are casements, upper sashes with leadlight and vertical glazing bars. There are cement-mould stringcourses at windowhead height and a flat band at cill height. Cills and heads are rendered.

SIGNIFICANCE: An interesting and fine Edwardian house built in 1908, with rare early examples of pylon chimneys, later popular in 1920s Californian bungalows.

It is architecturally significant locally, as an interesting Edwardian style house, demonstrating strong formal characteristics, including a rectangular belvedere, its chimneys and a fine Art Nouveau frieze valence and as one of a group of 12 relatively intact and most varied, in Aberdeen Street.

It is significant historically as a representative embodiment of the way of life in the Edwardian period in Newtown.

INTACTNESS: The front verandah is infilled with windows. There is an inappropriately high front timber fence in butted pickets.

CONDITIONS & THREATS: Very good. Render needs repointing, carefully.

¹ *City of Newtown and Chilwell Ratebooks*, 1906-10, 1915-16, 1922-23, 1927-28, 1932-33, 1937-38. *Sands & McDougall Directory*, 1946, 1956, 1961, 1970.