

[to come]

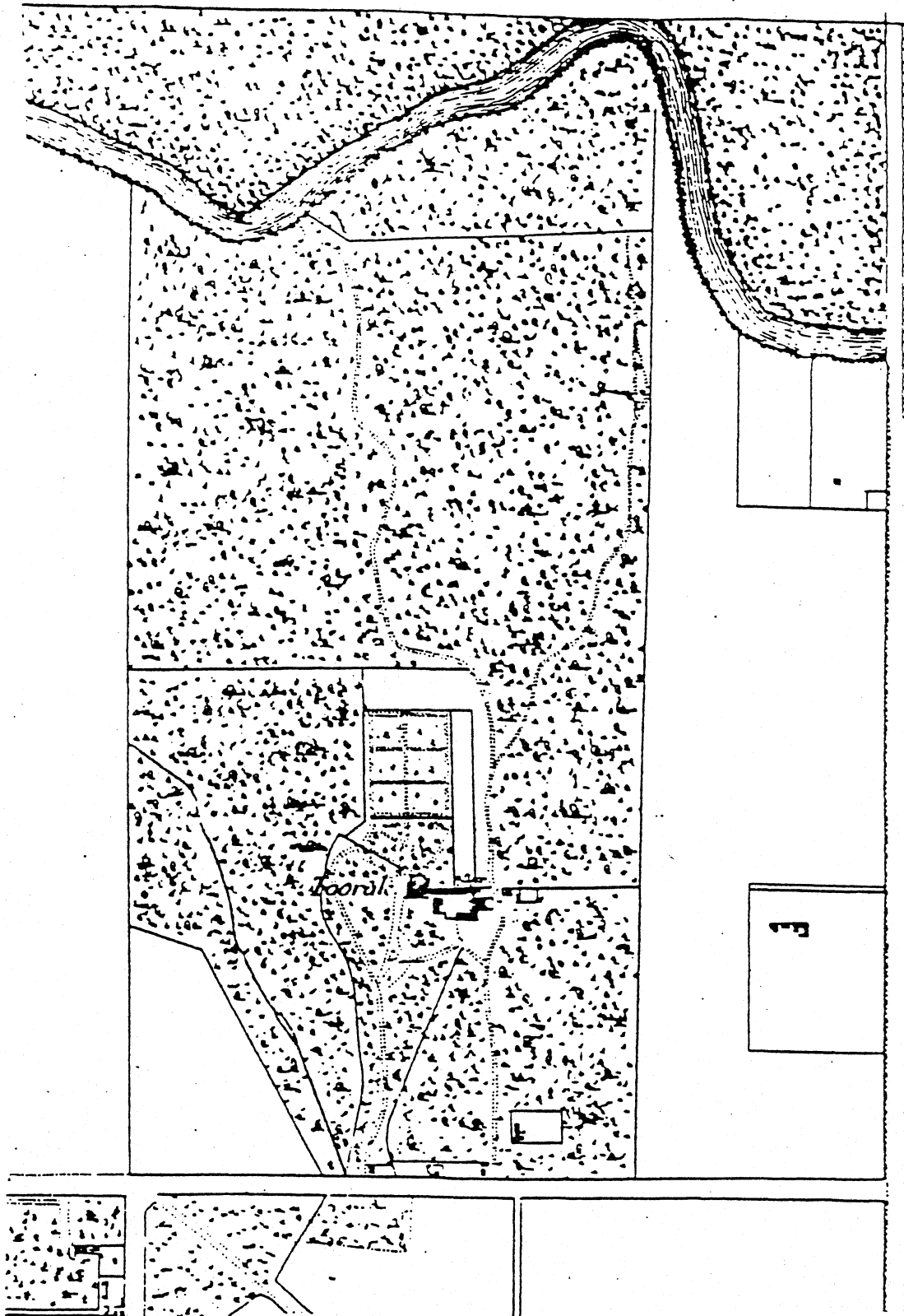


Figure 2 1855 Kearney plan

1874

574

27

GOVERNOR'S PARK

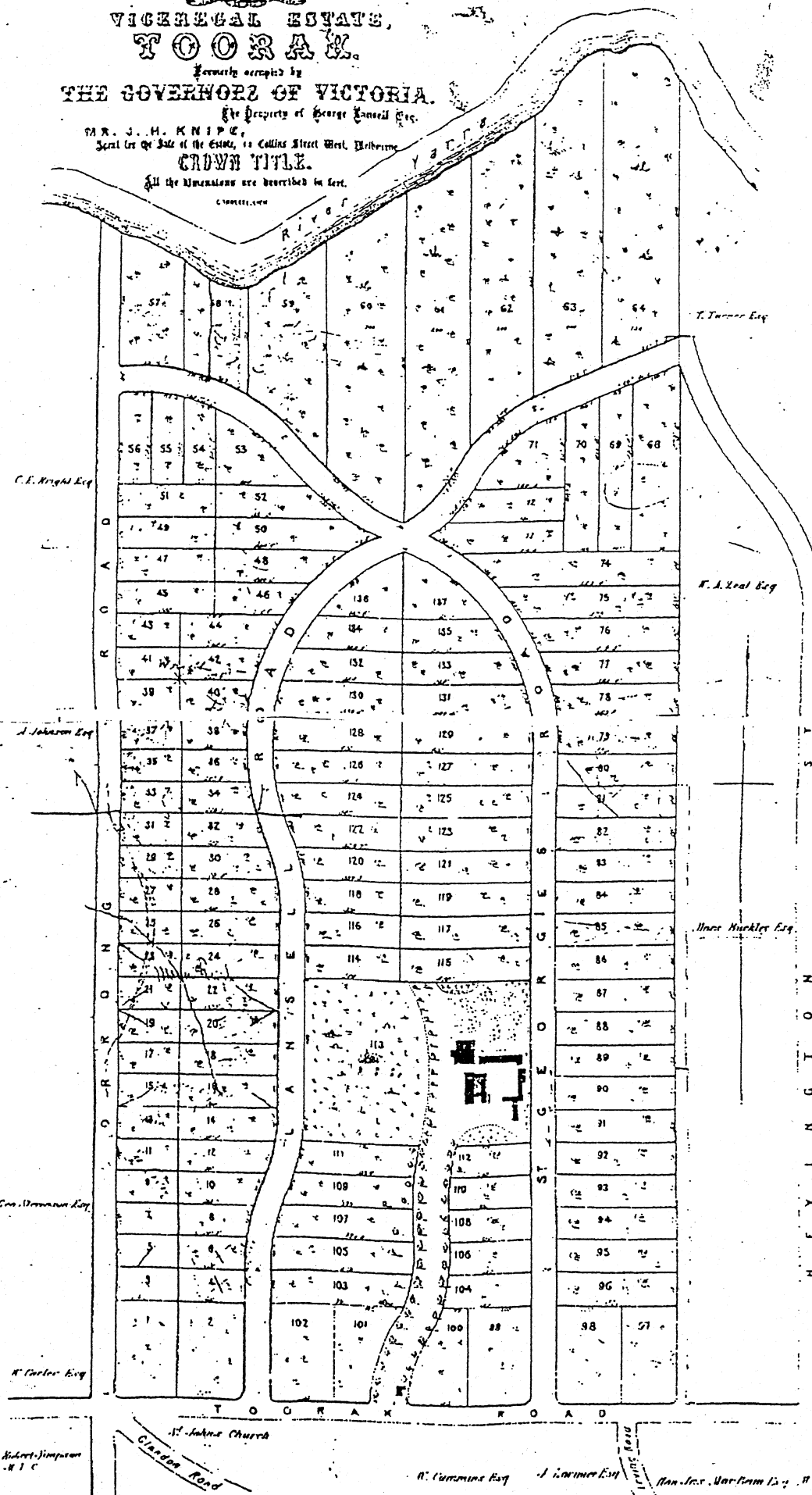
VICEREGAL ESTATE, TOORAK.

Formerly occupied by
THE GOVERNORS OF VICTORIA.

The Property of George Knipe Esq.
MR. J. H. KNIFE,
Sole Agent for Sale of the Estate, 11 Collins Street West, Melbourne.

CROWN TITLE.

All the Dimensions are described in feet.



NOTICE.

By Order of the
VICEROYAL AUCTIONEER.

Sale

of the

VICEROYAL AUCTIONEER

of the

SATURDAY

the 11th

MONDAY

at 11 o'clock

of the day

at 11 o'clock

of the day

at 11 o'clock

of the day

at 11 o'clock

of the day

at 11 o'clock

of the day

at 11 o'clock

of the day

at 11 o'clock

of the day

at 11 o'clock

of the day

at 11 o'clock

of the day

at 11 o'clock

of the day

at 11 o'clock

of the day

at 11 o'clock

of the day

at 11 o'clock

of the day

at 11 o'clock

of the day

at 11 o'clock

of the day

at 11 o'clock

of the day

at 11 o'clock

of the day

at 11 o'clock

of the day

at 11 o'clock

of the day

at 11 o'clock

of the day

at 11 o'clock

of the day

at 11 o'clock

of the day

Figure 3 Subdivision plan, Governor's Park Viceregal Estate, Toorak, 1874

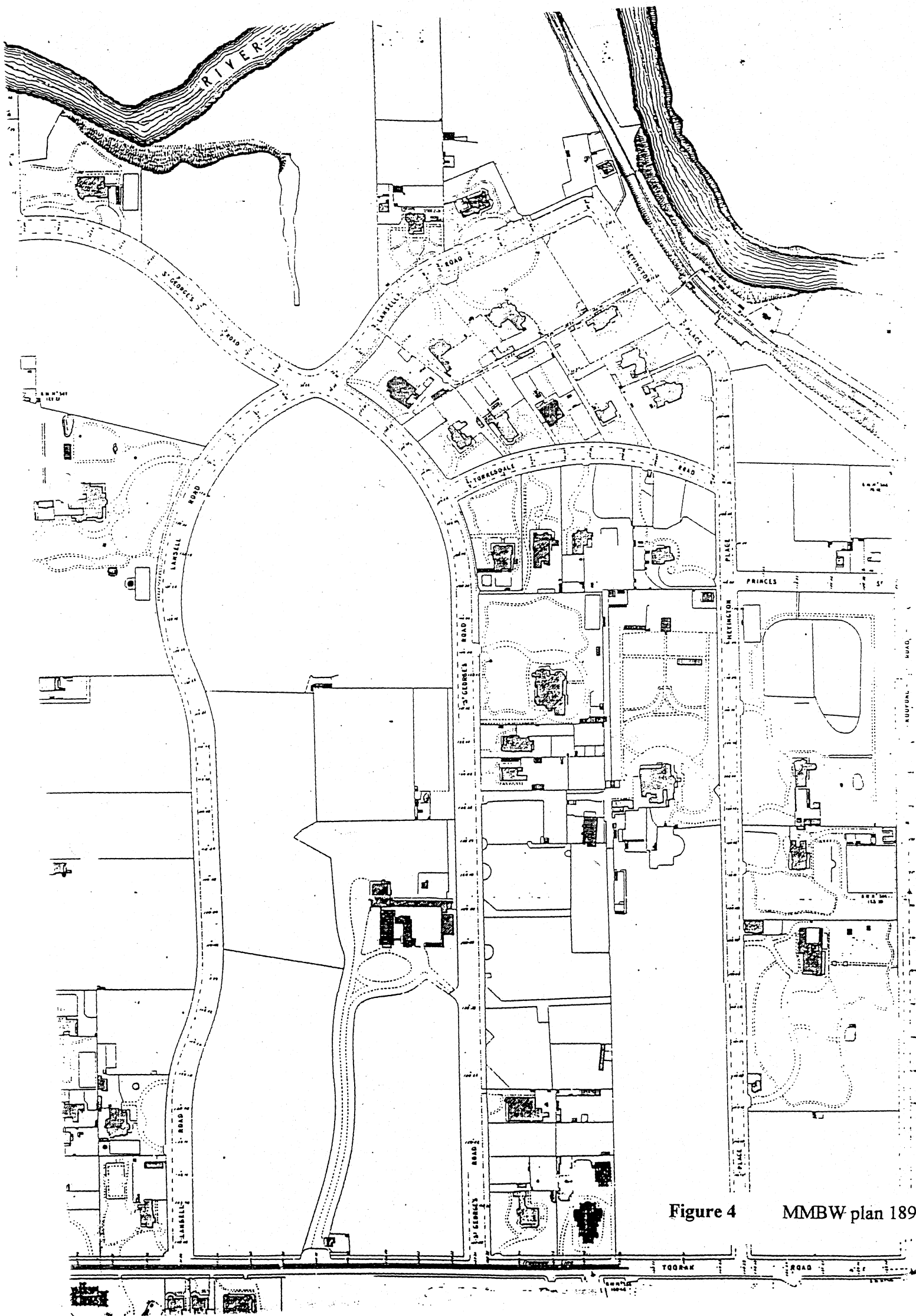


Figure 4 MMBW plan 1895

TOORAK ESTATE

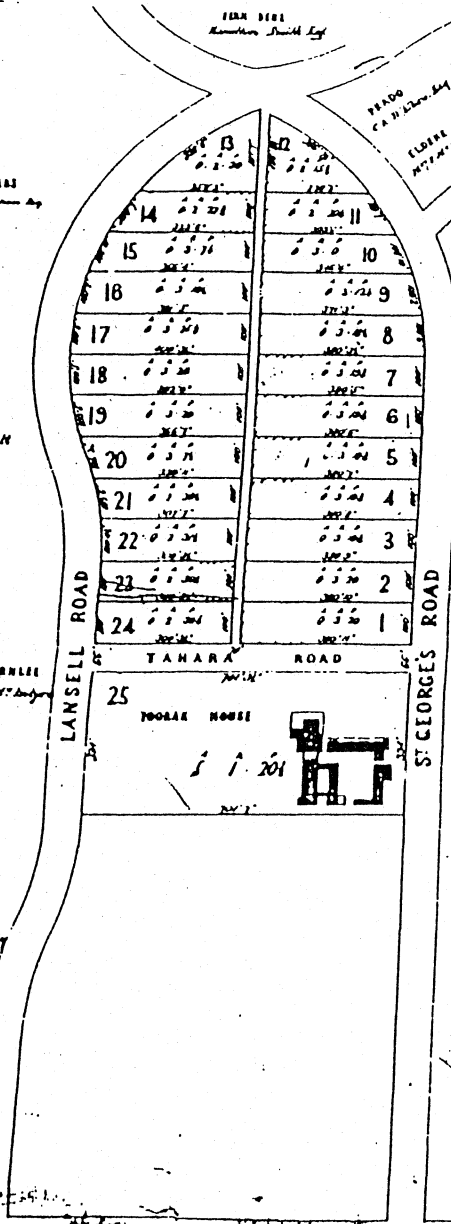
By Order of Executors of Will of Mrs. ANN NICHOLAS, deceased

To be Sold by Public Auction by **C. J. & T. HAM,** Auctioneers
In Conjunction with OFFICER & SMITH, Agents.

On the Ground, On **SATURDAY, 27th OCTOBER, 1900**

C. J. & T. HAM, Auctioneers, 75 Swanston Street, or OFFICER & SMIT Collins Street.

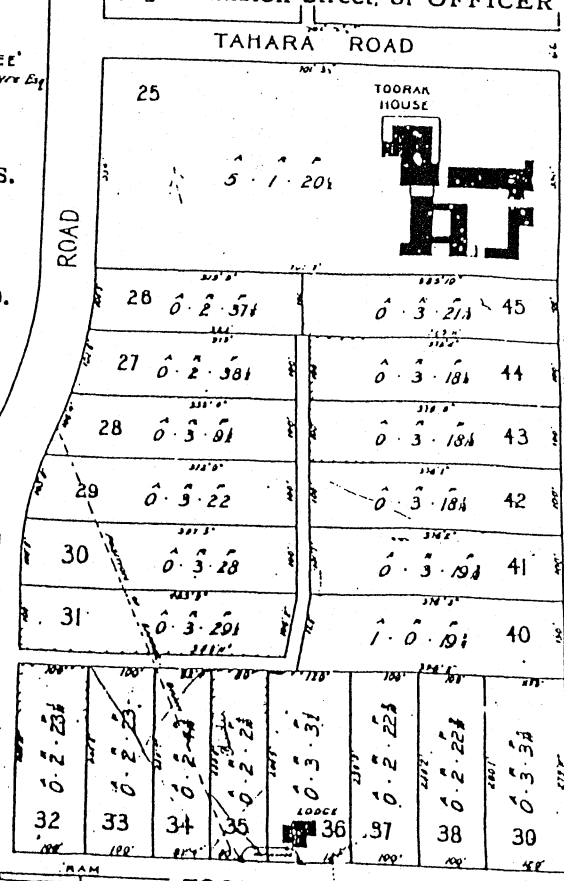
Figure 5 Subdivision Plan and Auction Notice, Toorak Estate 27 October 1900



Grand Frontages.
Splendid Depths.
Lovely Views.
Perfect Drainage.
Elegant Surroundings.
Select Neighborhood

**TITLE
CERTIFICATE.**

Solicitors:
Messrs.
Malleson, England & Stewart
Queen St., Melbourne.
'REPTON'
R. Murray Smith, Esq.



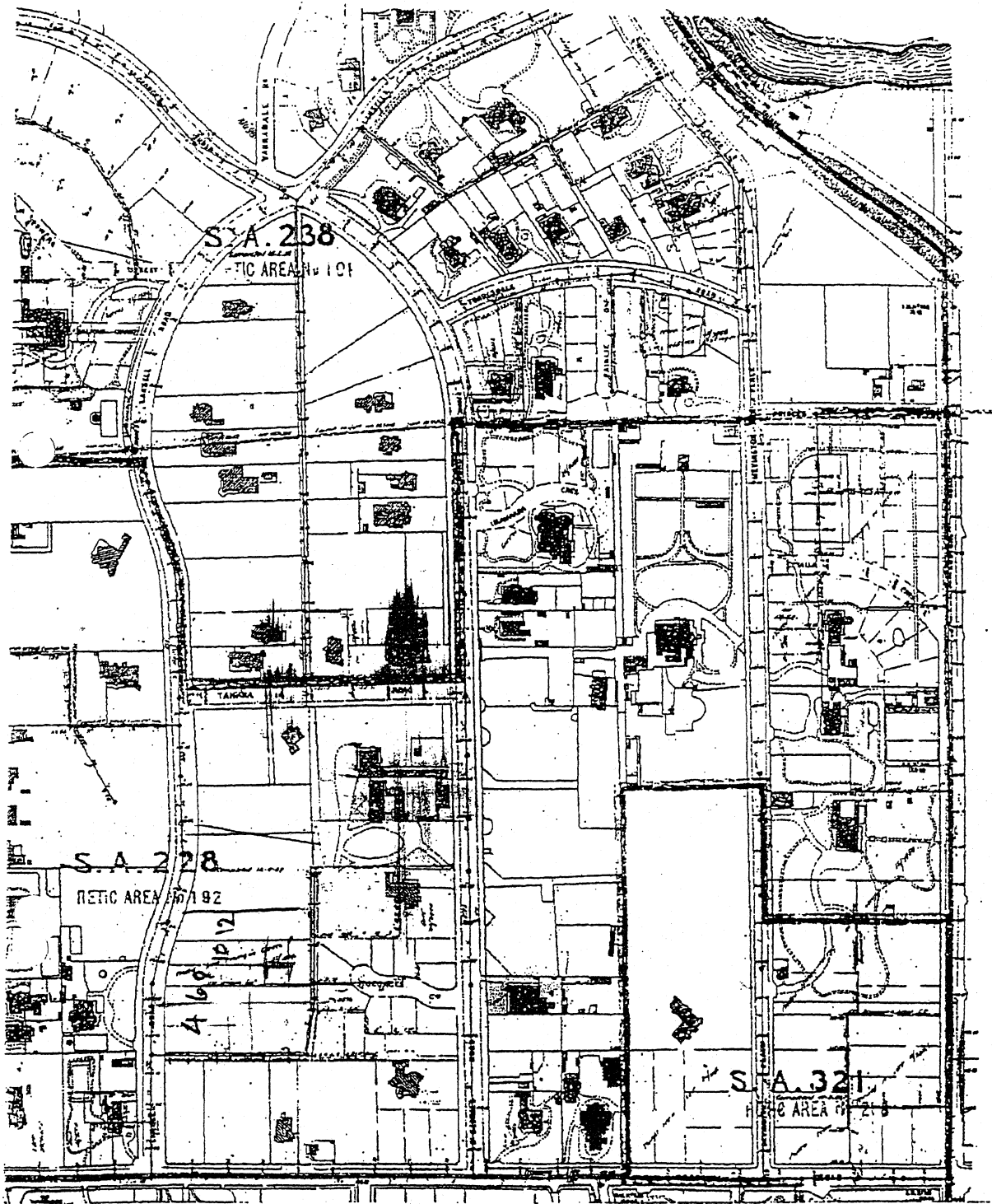
Executors' Sale.
Superb Position.
On Toorak
Tram Route.
Convenient to
The Heyington
Station.

Terms 1/4 Cash

Balance
In Two Instalments,
In June 1901,
and June 1902, at 5 per cent.

TOORAK
PRIVATE ESTATE CO.

PRAHRAN



Working copy n.d.

Figure 6 MMBW plan working copy annotated 1900-1938

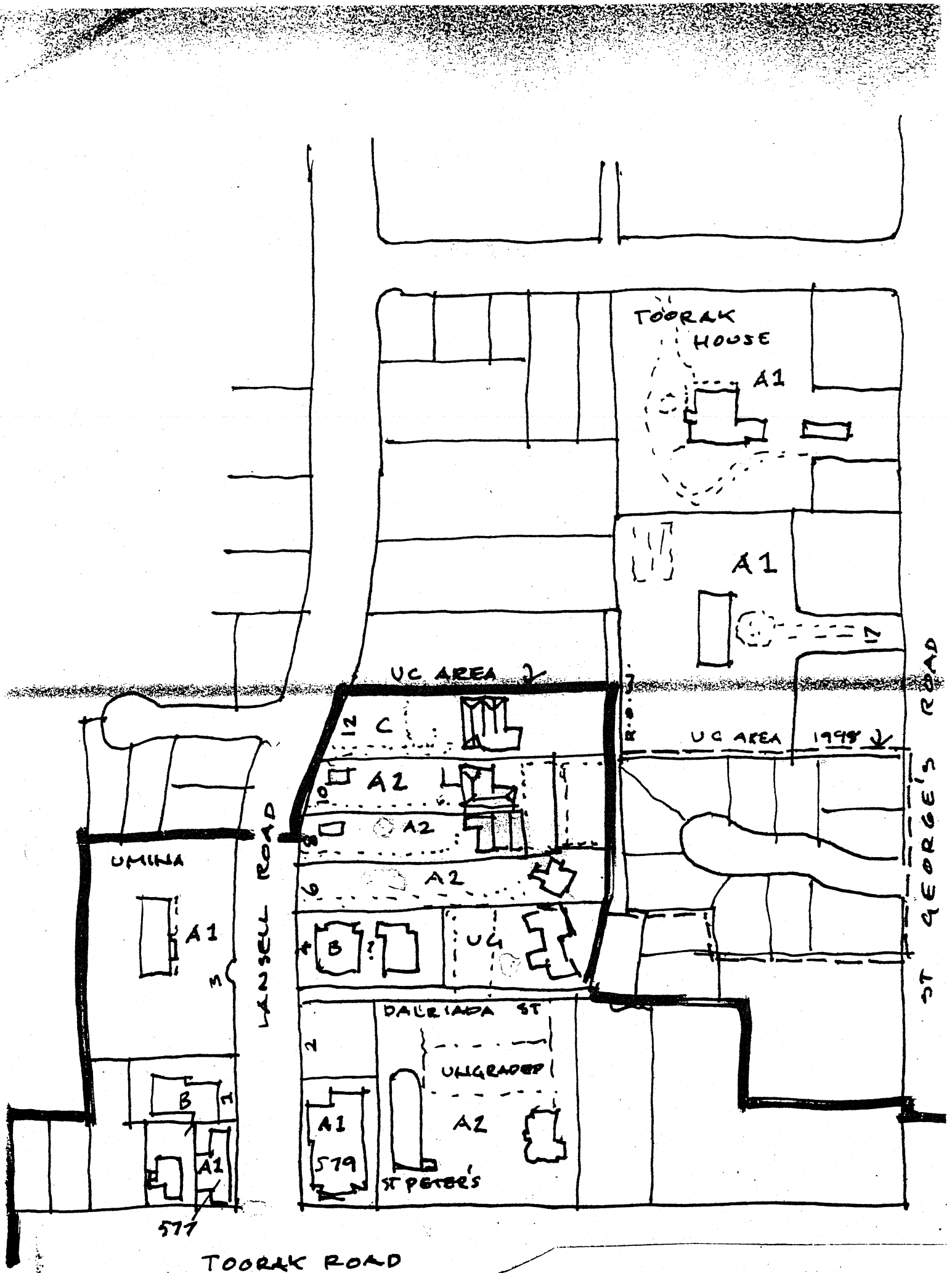


Figure 7 Existing building gradings and urban conservation areas plan

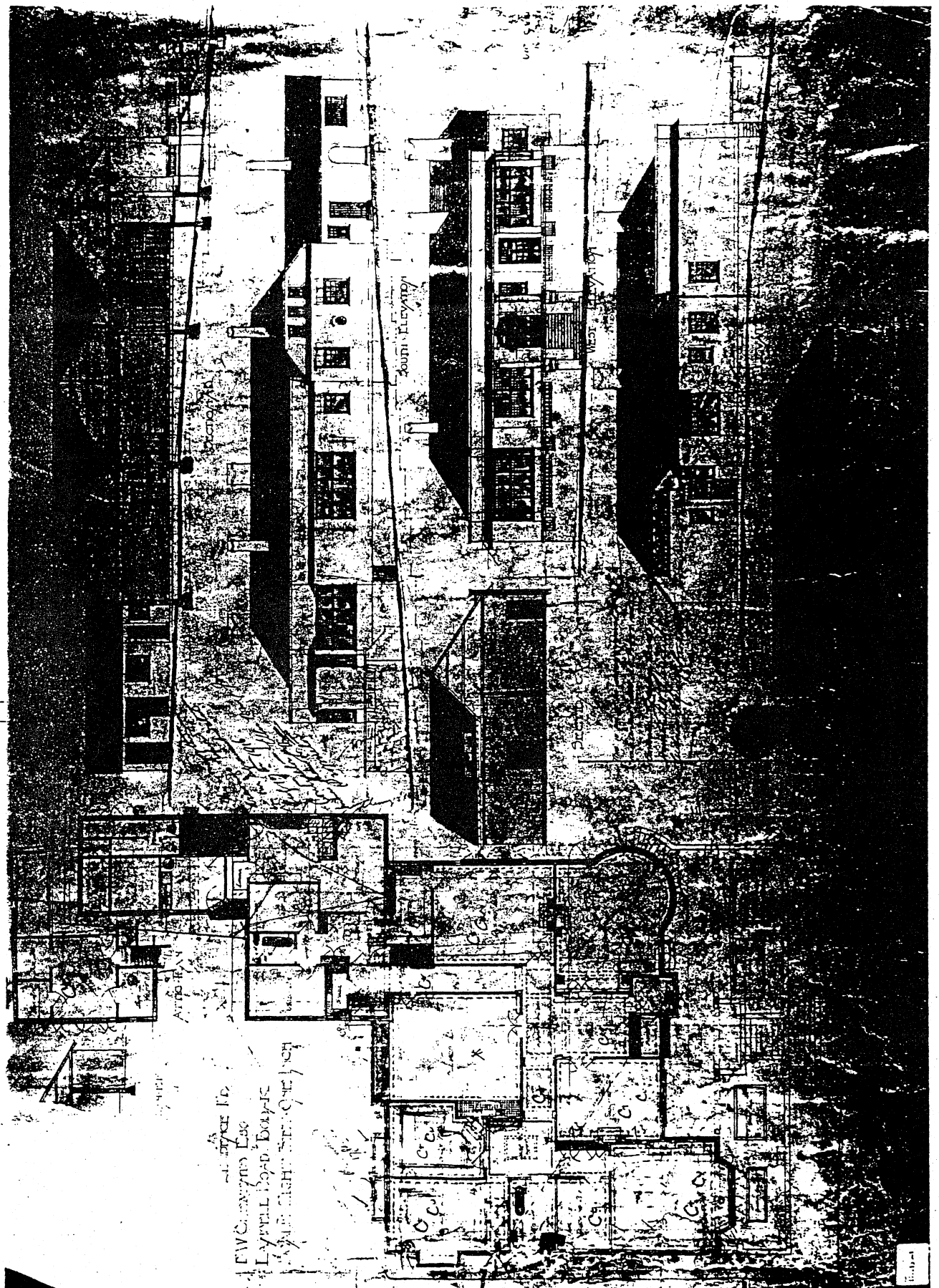


Figure 8

Contract drawing, Walter Butler collection, University of Melbourne
Architectural Drawing Collection, State Library of Victoria, WD HO. 130

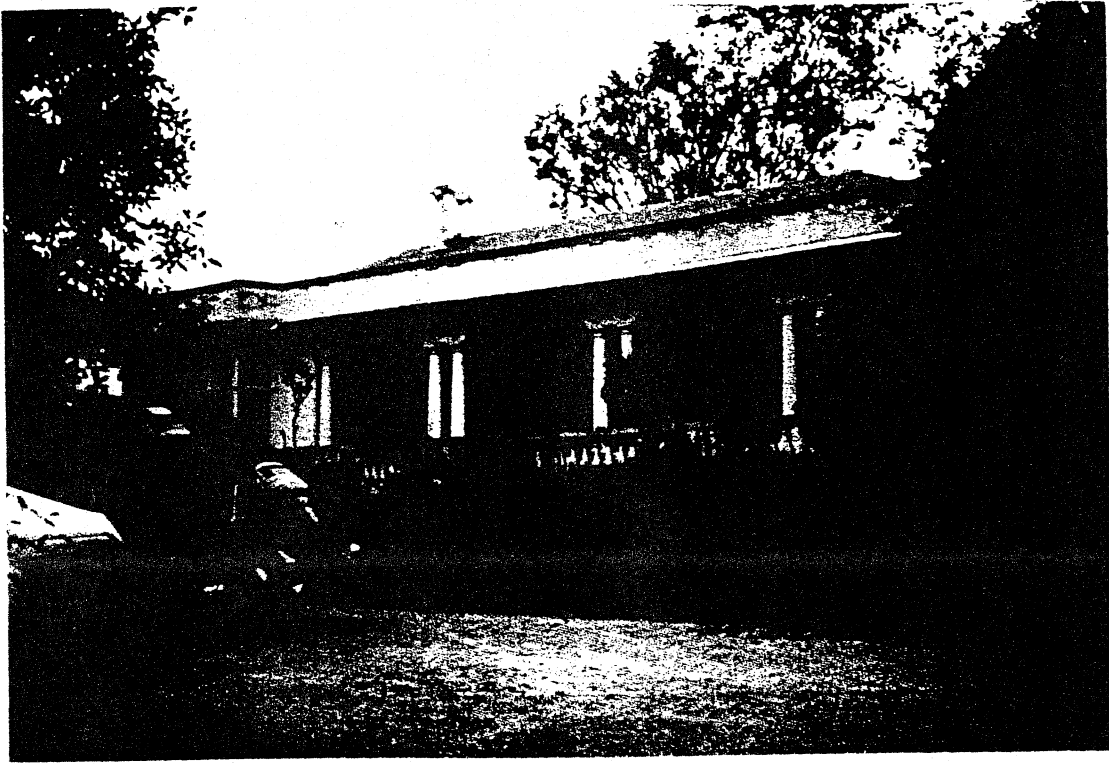


Figure 9 Existing conditions photographs:
west facing main elevation, graveled informal upper terrace with hard standing area and formal balustraded terrace above.

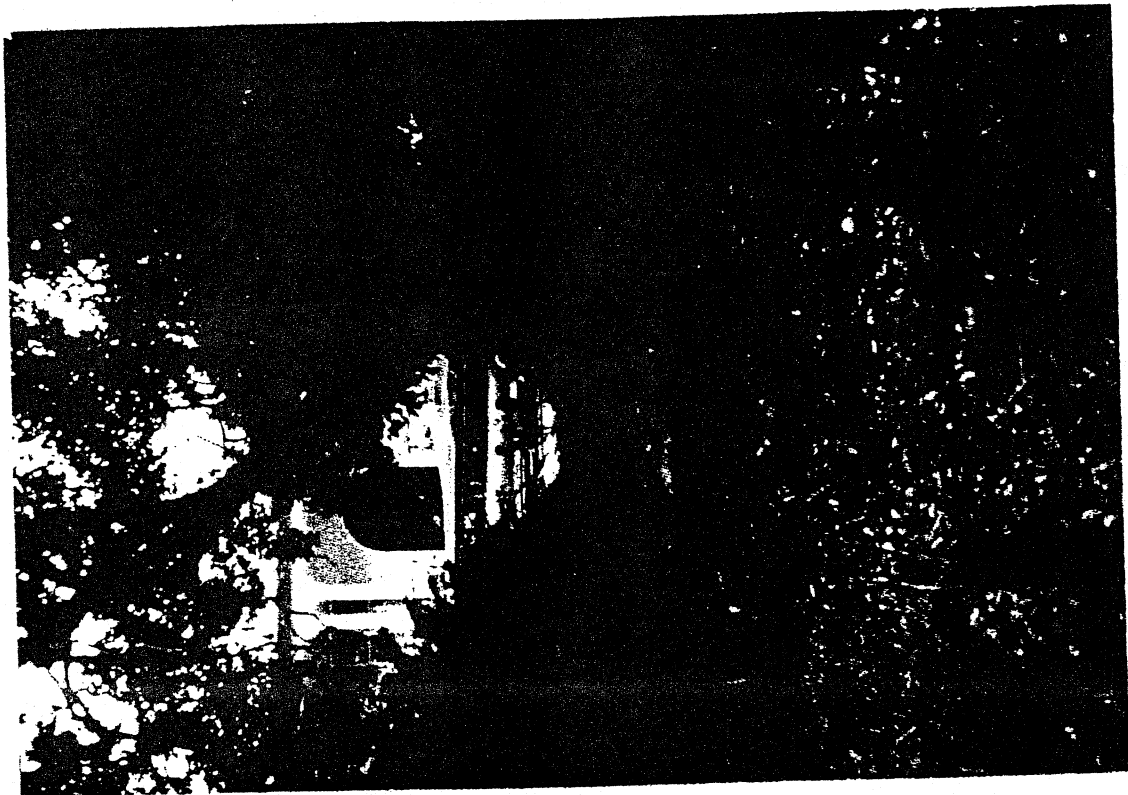


Figure 10 View for lower informal terrace level with axial view of steps between informal terraces looking toward entrance archway.

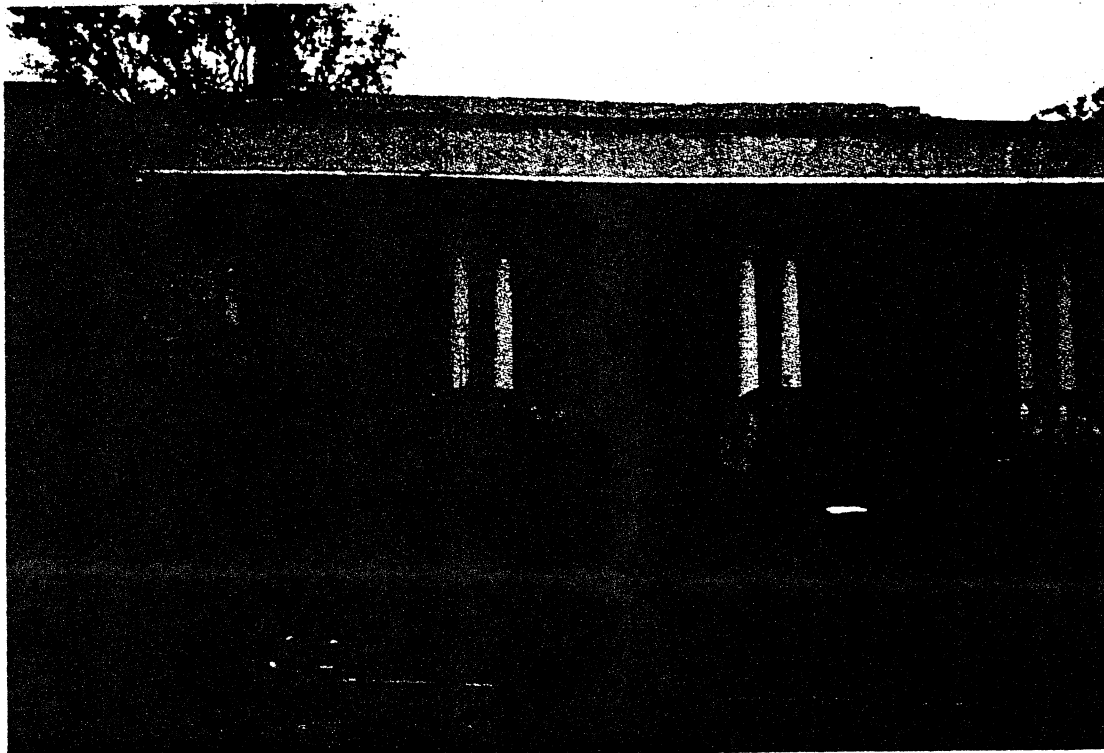


Figure 11 Colonial detailing of paired columns with impost of colonnade and eave applied above the column capitals; and entry archway.



Figure 12 Concentric curved side access stairs to formal terrace around corner bow window



Figure 13 Corner bow window and French doors to sitting room



Figure 14 View from sitting room across colonnade and formal terrace



Figure 15 Corner bay window of sitting room



Figure 16 Billiard room window and French doors