

National Trust of Australia (Victoria)

VICTORIAN CHURCHES

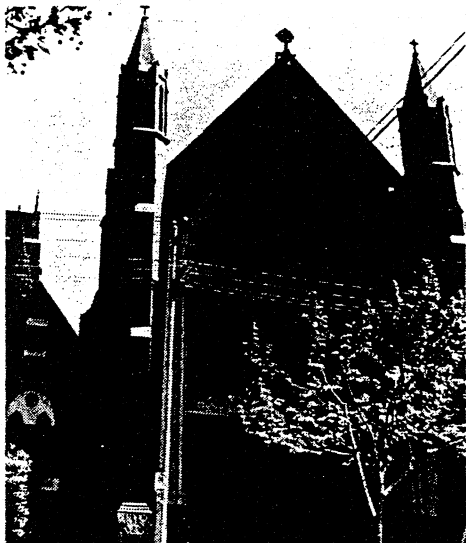
Miles Lewis
editor

Marie Moore
project officer

John Maidment
Anne Neale
Walter Phillips

NATIONAL TRUST





122. St Alban's, cnr Orrong & Wynnstey Roads, Armadale

Anglican

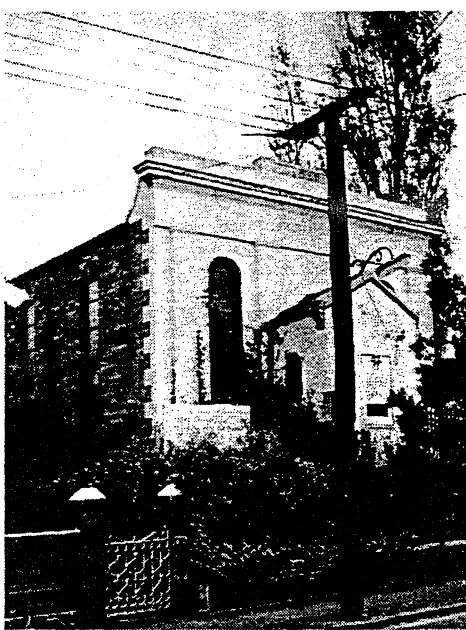
1898

Inskip & Butler

Gothic Survival: Arts & Crafts Gothic

A substantial brick "town" church designed by Inskip & Butler and built in 1898, comprising a lofty clerestoried nave, passage aisles, elevated chancel, vestries and organ chamber, and a tower of the 1960s, not to the original design. The building is notable for its striking façade incorporating a large five-light lancet window, flanking octagonal turrets and arch, with brickwork in diaper patterns. The roof ridge remains unbroken from east to west and has a distinctive brick interior. This was Victoria's first church in the Arts and Crafts mode, and perhaps the first really up-to-date church built in the colony for thirty years.

- 2. General Historical Importance: Victoria's first church in the Arts and Crafts mode
- 6. Stained Glass: outstanding east window
- 7. Decorations: striking diaper patterned brick interior
- 8. Joinery, Furniture & Fittings: choir stalls, reredos, wrought iron communion rails, encaustic tiles in chancel



123. United Methodist Free (later Congregational), 72 Peel Street, Windsor

United Methodist Free

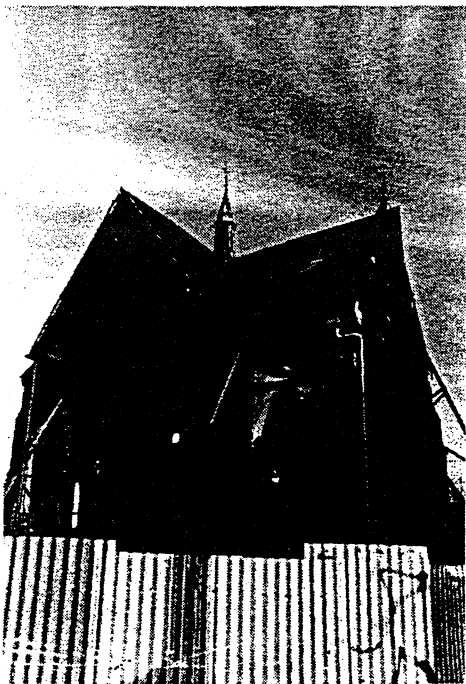
1858

Architect unknown

Classical: Pilastrated/Stripped

The only known surviving Uniting Methodist Free Church in Victoria, built in 1858 with a pilastrated stuccoed façade distinguished by the use of Greek Revival parapet block composition in place of the more usual pediment. The façade is largely intact, but the Georgian windows have been replaced and the porch appears to be an afterthought, possibly dating from 1872 when the building was taken over by the Congregationalists.

- 1. Religious Historical Importance: only United Methodist Free Church in Victoria



124. Wesleyan Jubilee, cnr Toorak & Williams Roads, Toorak

Wesleyan

1887

Terry & Oakden

Gothic-Polychrome/Polytexture: Full Polychrome

A dramatically-sited polychrome brick church with stone details, designed by Percy Oakden and built in 1887, comprising a hexagonal preaching space, crowned by a wooden flèche, and apsidal termination sited above an undercroft. The nave was intended to be longer. This building is notable for its powerful use of brickwork, vertical proportions simplified details and amphitheatrical interior. The building was illegally part-demolished in November 1985.

- 2. General Historical Importance: controversial demolition of 1985 and subsequent redevelopment proposals
- 4. Special Plan Form: amphitheatre form