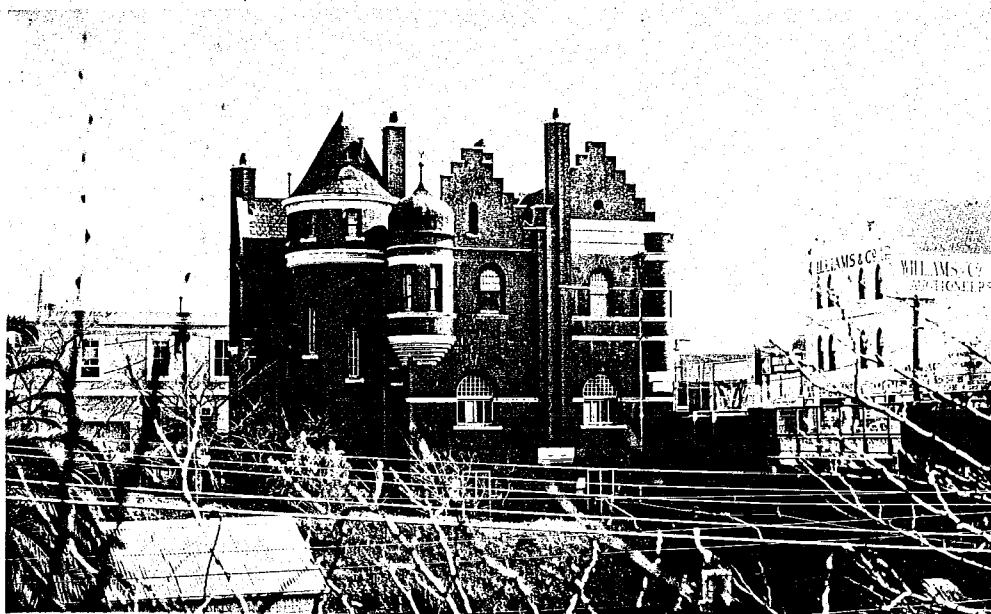


FORMER SOUTH YARRA POST OFFICE  
162 Toorak Road



Recommendations It is recommended that this building be retained on the Register of Historic Buildings and Register of the National Estate, and be protected using the provisions of Clause B of the Town and Country Planning Act (Third Schedule).

Current Assessments This building is currently included on the Register of Historic Buildings, Register of the National Estate and classified by the National Trust of Australia (Victoria).

History and Description On a restricted and precipitous site adjacent to the railway cutting at 162 Toorak Road stands the former South Yarra Post Office. Designed in 1890 by P.W.D. Architect, A. J. MacDonald and erected in 1892-3, the three storey red brick structure combines basic American Romanesque characteristics with Scottish baronial forms and art nouveau and Australian decorative motifs in an asymmetrical picturesque composition.

Significance The former South Yarra Post Office is unique in the history of Australian architecture and one of a rare group of buildings which, whilst reflecting the influence of the American romanesque, epitomises the late 19th century movement to evolve an Australian style in architecture. The post office is an outstanding, innovative work of A. J. MacDonald and one of the most important and influential designs to come from the P.W.D. in the 1890s.

Intactness South Yarra Post Office is largely intact although presently vacant (1982). The interior has been seriously vandalised.

References

Orth, Myra Dickman 'The Influence of the American Romanesque in Australia' in Journal of the Society of Architectural Historians, USA, March 1975.

Trethowan, Bruce, 'The Public Works Department of Victoria 1851-1900' Research Report, Department of Architecture & Building,

University of Melbourne 1975.  
Public Records Office, Victoria, Summary of Contracts Books.  
Commonwealth Archives, Brighton Victoria, Plan Collection 'Post  
and Telegraph Office South Yarra'.

(National Estate citation reprinted with permission of the  
Australian Heritage Commission)