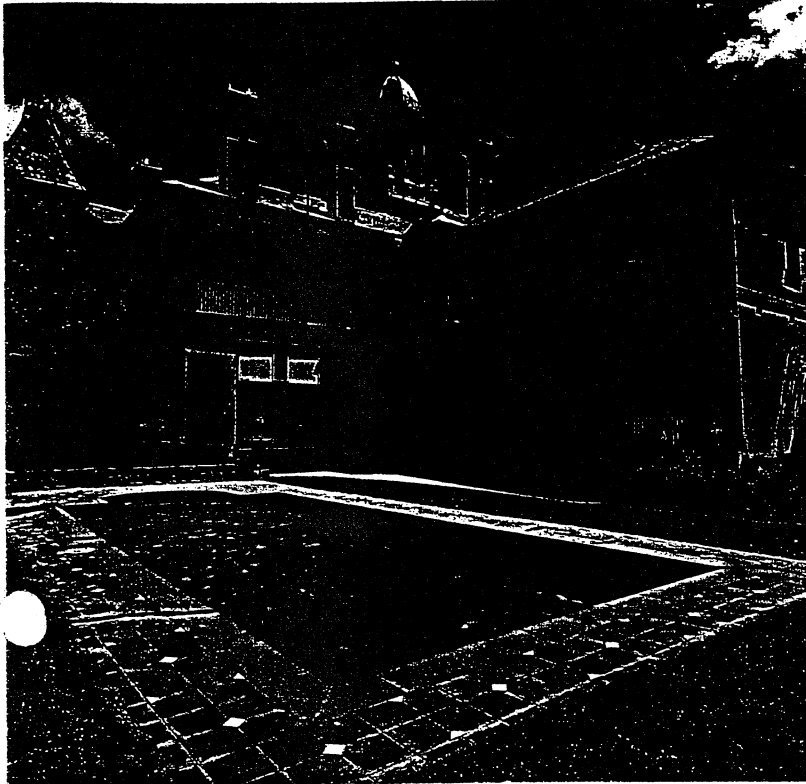


"Sebrof" (Circa 1882)
514 Orrong Road, Armadale
Melbourne, Australia

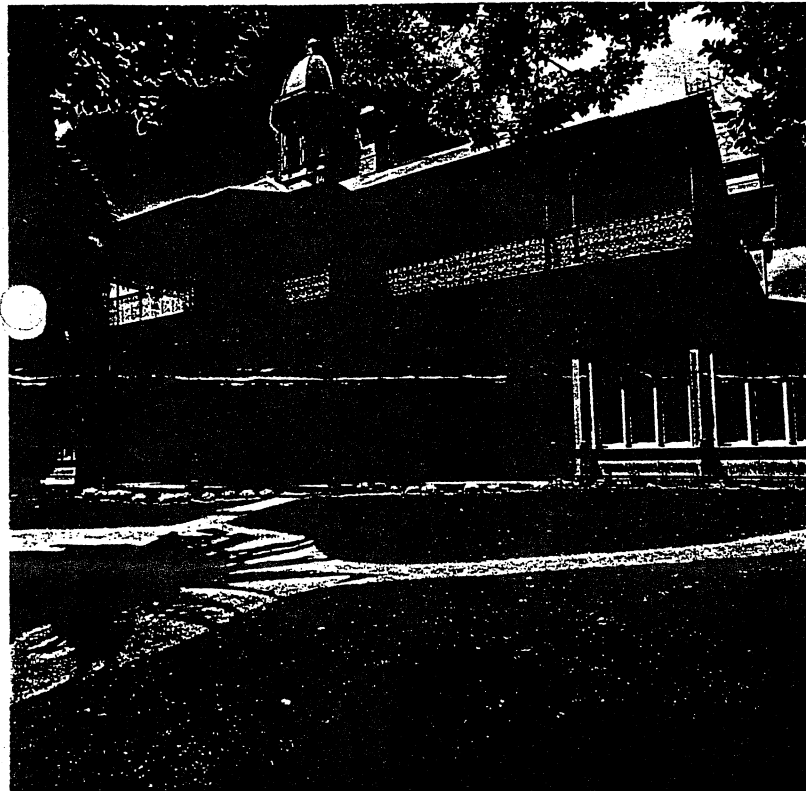
DISTINGUISHED VICTORIAN MANSION

SOTHEBY'S
INTERNATIONAL REALTY

DISTINGUISHED VICTORIAN MANSION – 514 Orrong Road, Armadale, Melbourne



Swimming pool at rear of residence



Residence

The Grounds

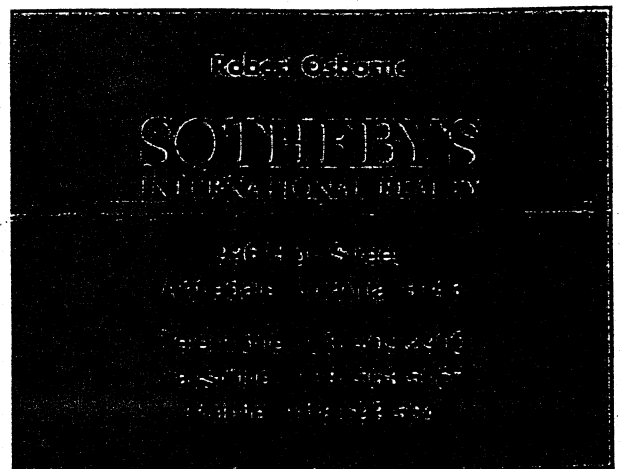
The grounds comprise just over half an acre (2,183 square metres or 23,500 square feet) of superb garden surrounds, privately enclosed by a brick wall with remote entrance gates and featuring a sweeping circular driveway, extensive lawns, automated sprinklers, studio/workshop and heated swimming pool and spa.

514 ORRONG ROAD,
ARMADALE, MELBOURNE
VICTORIA, AUSTRALIA

INSPECTIONS: BY APPOINTMENT

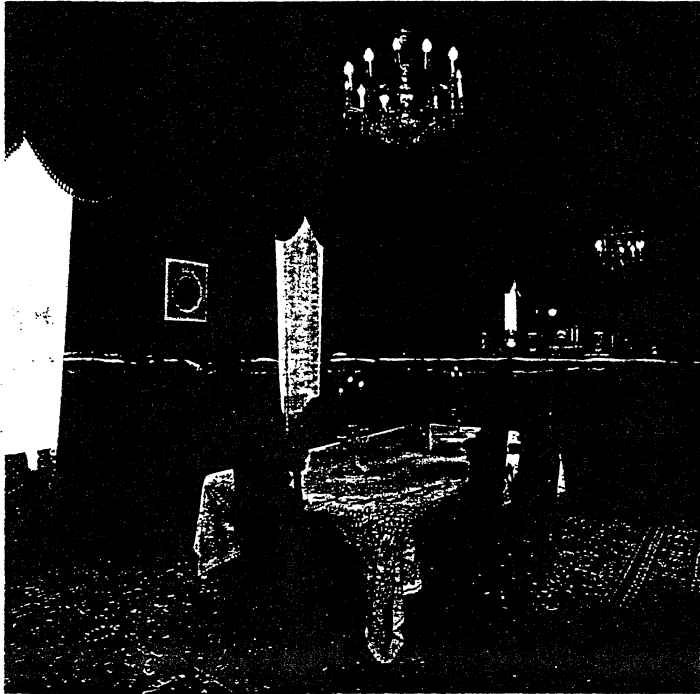
Auction: On site 2.00pm
Saturday 29th April 1995

BROCHURE NUMBER: 2070020

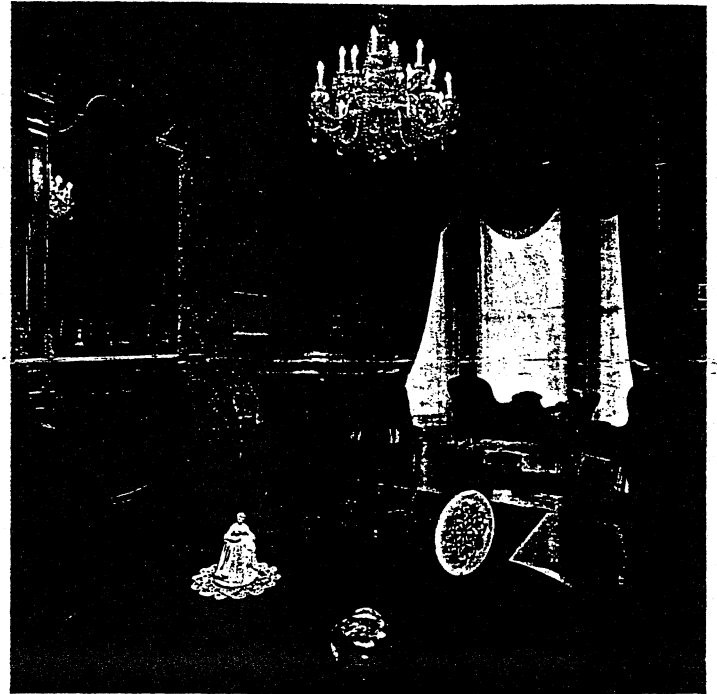


This material is based upon information which we consider reliable, but because it has been supplied by third parties we cannot represent that it is accurate or complete and it should not be relied upon as such. This offering is subject to errors, omissions, change of price or withdrawal without notice.

DISTINGUISHED VICTORIAN MANSION – 514 Orrong Road, Armadale, Melbourne



Dining Room



Drawing Room

"Sebrof", a classic Victorian mansion, is distinguished by its historical significance and architectural splendour. Regarded by many as one of the finest examples of Victorian architecture, the residence was built in 1882, during Melbourne's opulent "boom period" for a prosperous businessman, Sir Charles Forbes, who named the property "Sebrof" (Forbes spelt in reverse).

The elegant two storey residence features two distinctive towers, the one over the entry being of four storeys and has two observation floors which have views to the City of Melbourne, Port Phillip Bay and the Dandenongs. An ornate two storey verandah surrounds three sides of the residence, terminating at both towers and featuring decorative cast iron balustrading, valancing, brackets and columns.

The interior offers sixteen main rooms, all of grand proportions. The main entrance hallway features eleven Grecian ladies holding lighted Amphoras and eight marble columns highlighted by magnificent ceiling cornices detailed with 24 carat gold leaf

and antique crystal chandeliers. The formal dining room features another crystal chandelier and an enormous fireplace with a Belgium black marble mantel and surround. Other outstanding features include polished pink Baltic and Kauri floors, imported wall papers, delicate stencils, multi-coloured plaster mouldings and French velvet and Moiré silk curtains throughout.

The grandeur of the past has been meticulously restored and thoughtfully updated at "Sebrof", combining elegant original details with all the modern amenities.

Graciously designed for entertaining, the home offers an array of formal and informal entertaining rooms, six bedrooms, three bathrooms, an enormous wine cellar and a separate self-contained guests or staff apartment.

The property is screened from the outside world by a high fence and established trees. The residence is sited in the centre of the grounds, surrounded by sweeping lawns and enhanced by a heated swimming pool and spa.