

(1999)

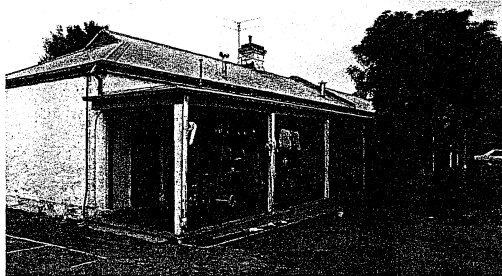
Portsea

(Mornington Peninsula Shire)

H 1090 Lord Mayor's Children's Camp (former Fort Franklin) (1870-80)

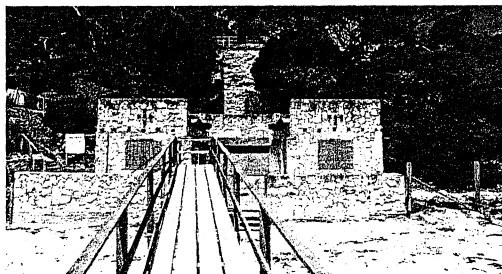
3704 Nepean Highway and 2-10 Franklin Road, Portsea

To the extent of all the buildings and land as defined by the Heritage Council.

*Lord Mayor's Children's Camp***H 1191 Ilyuka Lime Kiln/Bathing Box (1880, 1930)**

2-16 Point King Road, Portsea

To the extent of all the building known as the lime kiln/bathing box; and the land as defined by the Heritage Council.

*Ilyuka Lime Kiln/Bathing Box***Prahran**

(Stonnington City)

H 203 Prahran Town Hall (1861, 1888, 1914)

Chapel Street, Prahran

To the extent of the small hall and Council chambers; as defined by the Heritage Council.

H 542 Former Police Station and Court House (1886)

corner Greville and Macquarie Streets, Prahran

To the extent of the whole of the building and the land as defined by the Heritage Council.

H 575 Former Rechabite Hall (1888)

10 Little Chapel Street, Prahran

To the extent of the whole of the building and land as defined by the Heritage Council.

H 1022 Former Independent Church (1859, 1883)

246 Malvern Road, Prahran

To the extent of all the building known as the former Independent Church; and the land as defined by the Heritage Council.

H 1585 Prahran Railway Station Complex (1895-96)

Porter Street, Prahran

Princetown

(Corangamite Shire)

H 392 Glenample Homestead (1866-69)

Simpson Road, Princetown

To the extent as defined by the Heritage Council.

Pyalong

(Mitchell Shire)

H 1695 Rail Bridge (1890)

over Hanfords Creek, Wandong-Bendigo Line, Pyalong

H 1451 Rail Bridge (1889)

over Mollisons Creek, Wandong-Bendigo Line, Pyalong

Pyramid Hill

(Loddon Shire)

H 1696 Pyramid Hill Railway Station (1888)

Pyramid Hill

Queenscliff

(Queenscliffe Borough)

H 1141 Queenscliff Hotel (1887-88)

16 Gellibrand Street, Queenscliff

To the extent of all the building known as the Queenscliff Hotel; and the land as defined by the Heritage Council.

H 1142 Ozone Hotel (1881)

42 Gellibrand Street, Queenscliff

To the extent of all the building known as the Ozone Hotel; and the land as defined by the Heritage Council.

H 1052 Lathamstowe (1882-83)

44 Gellibrand Street, Queenscliff

To the extent of all the building known as Lathamstowe, including the brick fencing (but excluding the 1913 cottage); and the land as defined by the Heritage Council.

H 1618 Pilots' Cottages (1853, 1880)

60-62 Gellibrand Street, Queenscliff

H 1125 St George the Martyr Church and Parish Hall (1863-64, 1878)

corner Hobson and Mercer Streets, Queenscliff

To the extent of all the buildings known as St George the Martyr Church, including the Parish Hall; and the land as defined by the Heritage Council.

H 1134 Rosenfeld (1859)

26 King Street, Queenscliff

To the extent of all the building known as Rosenfeld (but excluding the weatherboard addition at the rear); and the land as defined by the Heritage Council.

