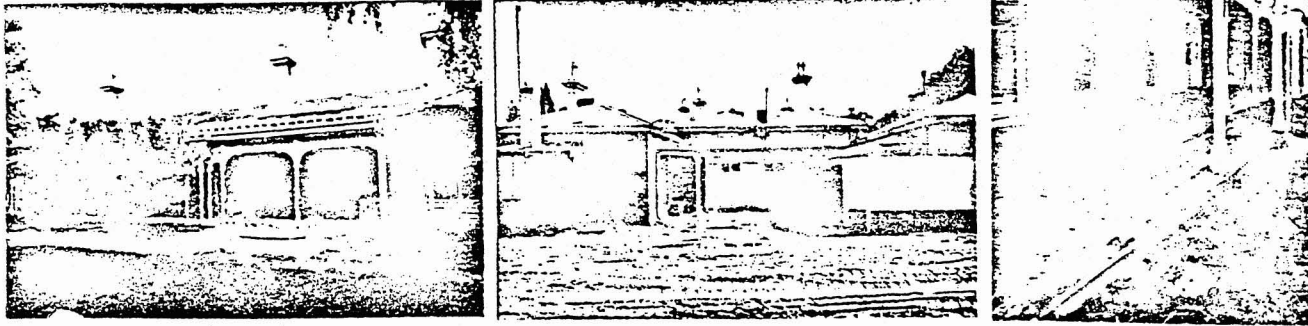


M/03/02

'FLETE'

2 Flete Avenue,
ARMADALE VIC. 3143



BUILDING CITATION

'Flete' in Flete Avenue Armadale was erected in 1882/3 for Supreme Court Judge Sir Hartley Williams on a site which originally fronted Kooyong Road. The Victorian Italianate style brick and stucco mansion with wide encircling verandah is allegedly based upon a Maltese Villa prototype and is symmetrically planned around wide internal passage axes which intersect to form a large central entrance hall, elaborately decorated.

'Flete' at Armadale is a mansion of considerable historical importance being firstly the residence of eminent Judge Sir Hartley Williams, *thought to have* later leased by the internationally acclaimed opera singer Dame Nellie Melba and subsequently occupied by Judge Sir John Latham. 'Flete' is a distinctively planned Italianate mansion most notable for the consistent elevational treatment, wide encircling verandah and high quality interior details. The mansion has few comparable counterparts in suburban Melbourne.

'Flete' has been occupied since 1946 as a womens' hostel for the Melbourne Bible Institute. Recently (1978) the mansion was acquired by the Yooralla Society of Victoria and will be restored and integrated into a proposed residential complex for handicapped persons.

Of state significance.

PRINCIPAL SOURCES OF INFORMATION

1. National Trust of Australia (Victoria) File No. 3357.
2. Cooper, J.B. History of Malvern specialty Press Melbourne 1935 p.136.
3. The Age Melbourne, 2 February 1973.
4. City of Malvern, Rate Books 1876-1974.
5. 'Chronological History of Flete' Derived from City of Malvern Records by S.E. Greenall, Rate Collector, 1974.
6. Serle, Percival. Dictionary of Australian Biography Sydney 1947 Vol I pp.20-23.
7. Miller, Robert 'Sir Hartley Williams (1843-1929) in Nairn, Bede (ed) Australian Dictionary of Biography M.U.O. Carlton 1976 Vol 6 pp. 403-404.