

HO 37 MAP 8

National Trust of Australia (Victoria)

# VICTORIAN CHURCHES

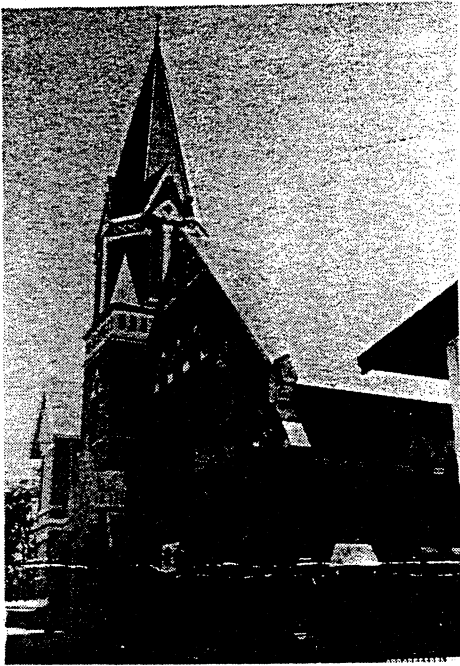
Miles Lewis  
editor

Marie Moore  
project officer

John Maidment  
Anne Neale  
Walter Phillips

NATIONAL TRUST





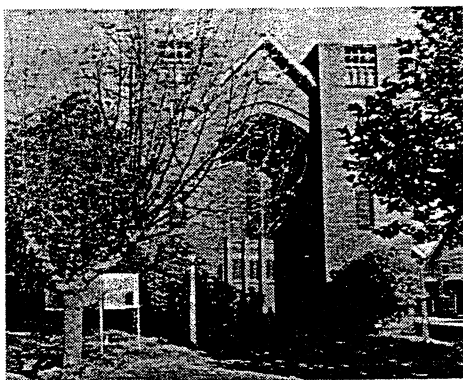
## 106. Wesleyan, 23 Highbury Grove, Kew

Wesleyan  
George Wharton

1882-83

Gothic-Polychrome/Polytexture: Full Polychrome

A brick church, with polychrome decoration, designed by George Wharton and built in 1882-83, with the addition of transepts and tower between 1886 and 1890. The building, comprising nave, transepts, vestries and organ chamber is of interest for its façade, with twin doorways and lancet window, flanked by an octagonal tower and spire, and transepts with rose windows. Many of the details are distinctive, even bizarre, including the tower with its square base carrying an octagonal drum supported by broaches.

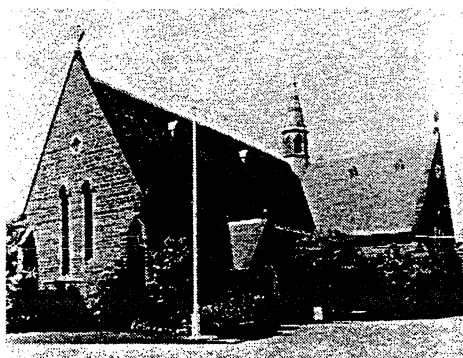
107. Peace Memorial Methodist (now St Catherine's Greek Church),  
3B Epping Street, East Malvern

Methodist  
North & Williams

1921-22

Gothic Survival: Arts &amp; Crafts Gothic

An impressive church in red brick with cement tracery, designed by North & Williams and built in 1921-22. The design is of particular interest for its imaginative use of brickwork, elaborate window tracery, sweeping roofs and bold massing. The church comprises a broad nave, aisle, chancel, vestries and imposing façade incorporating a deeply soffited arch and flanking towers.



## 108. St George's, Glenferrie Road, Malvern

Anglican  
S.H. Merrett [Dalton & Gibbons] [Nathaniel Billing]

1865 [1885] [1889]

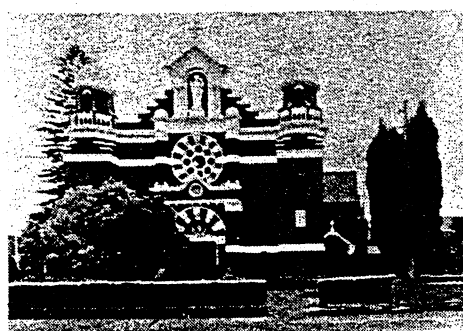
Gothic-Early English: Mainstream

A cruciform bluestone church begun in 1865 to the design of S.H. Merrett; extended between 1885 and 1889 to the design of Dalton & Gibbons and Nathaniel Billing; and finally completed in 1923 by the addition of St Martin's chapel. The only known example of a church designed by Merrett, the severe exterior is of interest for its elongated lancet windows and elaborate timber crossing flèche. The interior contains excellent stained glass by Clayton & Bell and an Oamaru stone font.

6. Stained Glass: Clayton &amp; Bell, London

7. Decorations: encaustic tiles in nave by Cawkwell &amp; Co. c.1888

8. Joinery, Furniture &amp; Fittings: stone font made in New Zealand; crucifix made in England (gift of Baron Somers when in residence at Stonnington)



## 109. St Joseph's, 47 Stanhope Street, Malvern

Roman Catholic  
A.A. Fritsch

1908

Romanesque: Blood &amp; Bandage Romanesque

One of Victoria's most dramatic churches in the red brick and cement, or 'Blood and Bandage' manner, designed by A.A. Fritsch and built in 1908. While the details of the building are basically Romanesque in form there is much of a Renaissance or Baroque character about the design, making it an interesting example in the range of anti-Gothic red brick designs developed by the Roman Catholics and especially by Fritsch.