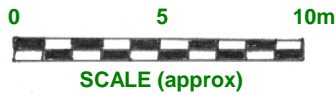


HERITAGE FEATURE SURVEY

MINING CAMP

JIM CROW CREEK HEPBURN REGIONAL PARK



3 = photo in Heritage Action Plan (sec 3.4)

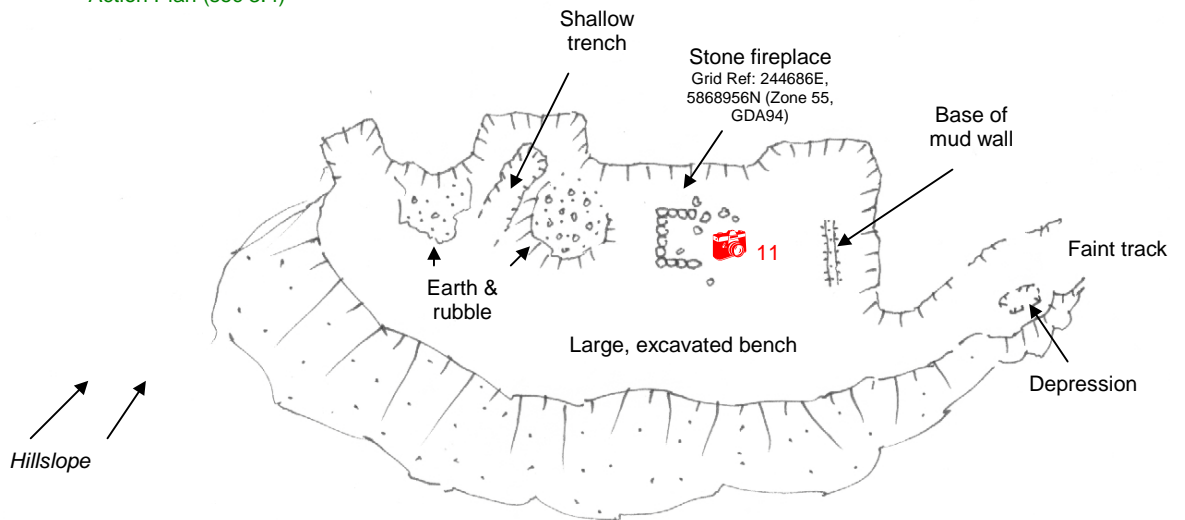


Small bench
– probably
from uprooted
tree



Small bench
– probably
from uprooted
tree

Small cutting
with earth bank
on three sides



Probable hut site and
remnants of fireplace

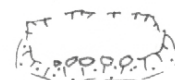


Hut site with some
stone edging.
Broken bottle glass
around site



18

Small hut site
with broken
bottle glass
strewn around



NORTH CENTRAL
Catchment Management Authority

Drawn August 2006 by R Kaufman, LRGMS – Services, from compass-&-tape survey carried out 15 May 2006 by R Kaufman, D Barnear (Heritage Victoria) and Kyra Fogden (Parks Victoria)