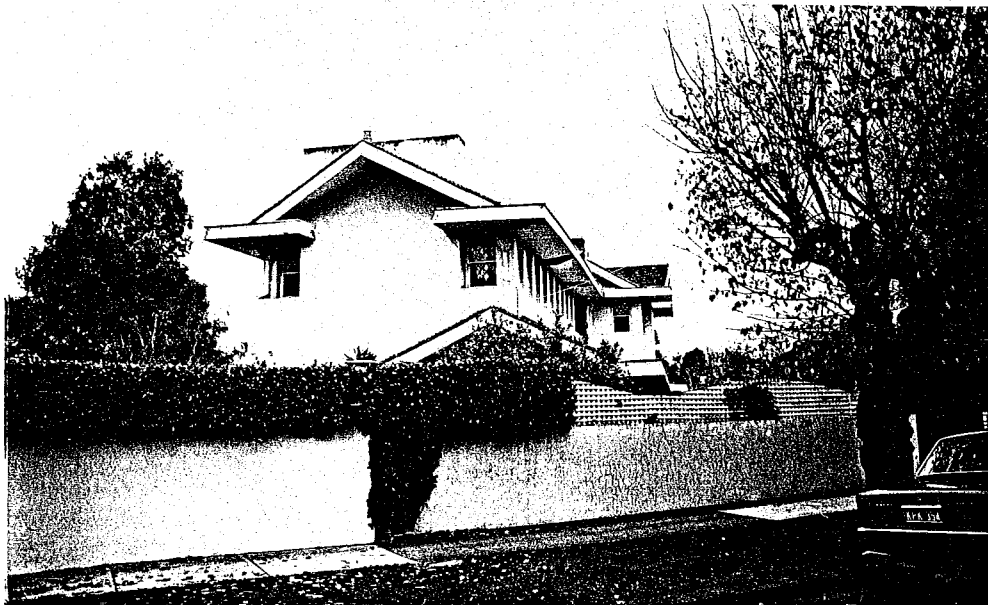


'CLENDON LODGE'

83 Clendon Road, Toorak



Recommendations It is recommended that this building be retained on the Register of Historic Buildings, Register of the National Estate and be protected using the provisions of Clause 8 of the Town and Country Planning Act (Third Schedule).

History and Description 'Clendon Lodge' in Clendon Road, Toorak was designed by Walter Burley Griffin and erected in 1923 for Mary Williams. Elevated on a prominent site at the junction of Toorak, Orrong and Clendon Roads, 'Clendon Lodge' uses simple massing within its cruciform plan with low, spreading gables, wide chimneys, and strips of windows below widespreading eaves. Indicative of the Prairie School influence, surfaces are plain and dark trim is avoided to allow the sun to highlight the building, as occurred in the warmer, southern areas of America.

Significance This residence is an important surviving example of the work executed in Melbourne by the celebrated architect, Walter Burley Griffin. It shows the adoption of the American style and features particular distinctive elements in the design.

Intactness 'Clendon Lodge' is reasonably intact.

References

- Royal Victorian Institute of Architects and Architects' Registration Board of Victoria, Guide to Victorian Architecture, Melbourne, 1956, p. 43.
- Johnson, D. L., The Architecture of Walter Burley Griffin, Melbourne, 1977, p. 62.
- Walter Burley Griffin', in Tanner, H., (ed), Architects of Australia, Melbourne 1981, p. 109.