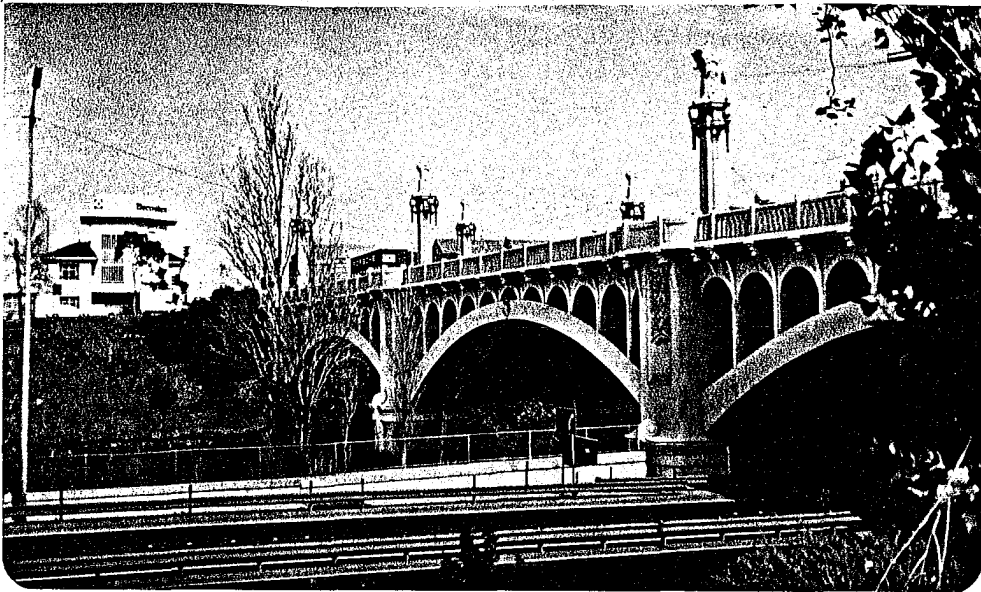


CHURCH STREET BRIDGE
Church Street crossing, Yarra River



Recommendations It is recommended that this bridge be added to the Register of Historic Buildings, Register of the National Estate and be protected using the provisions of Clause 8 of the Town and Country Planning Act (Third Schedule).

History and Description Erected in 1923-24 by the Reinforced Concrete and Monier Pipe Construction Co. to the design of architects Harold Desbrowe Annear and Thomas Ramsden Ashworth and engineer John Ashworth Laing, this bridge replaced an earlier outdated iron bridge. Designed c. 1920, the new reinforced concrete bridge was built with three spans bridged by seven open spandrel arched ribs equally spaced across the width of the bridge, joined at the crown and each springing from cast steel hinges to allow for expansion or movement. The carriageway was utilised for the electric tramway soon after construction and ornamented pylons provided support for overhead wires, as well as decorative lighting fixtures.

Significance This arch bridge represents a graceful use of reinforced concrete as applied to bridge design. Involvement of noted architect Harold Desbrowe Annear in the design is significant, especially in the years 1920 - 25, a fruitful period in practice, particularly for projects in Toorak and South Yarra.

Intactness This bridge is substantially intact and still in use.

References

- Laing, J. A., 'The New Church Street Bridge', in Desbrowe Annear (ed), For Every Man His Home, Melbourne, 1922, pp. 67-68.
- Prahran City Council, Annual Reports 1920-21, p. 7; 1922-23, p. 8, (colour illustration), p. 28; 1928-29, p. 66; 1932-33, facing p. 40.
- Woodfall, 'Harold Desbrowe Annear; 1866-1933', Architecture in Australia, February 1967, pp. 106, 108.