

History

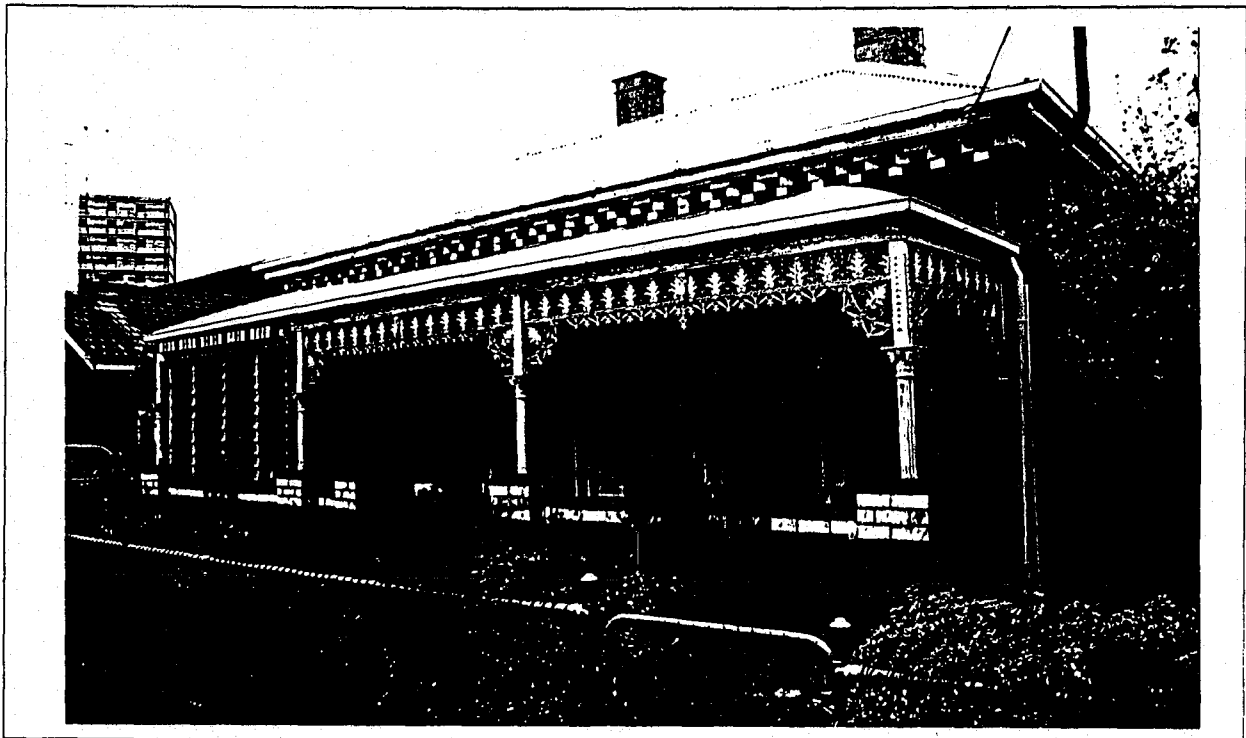
Not surprisingly, a quarryman named Daniel Treagus, first owned and occupied this brick and stone house in 1887.¹ Treagus remained here with Emma Jane (his wife?) and teacher, George Treagus,² into the 1920s.³ From this time, Daniel and later just Mrs. Thomas, occupied the house at least until the mid-1950s.⁴

Victoria & Its Metropolis gives an entry for the quarrying firm of Tragus Brothers & Day of Footscray, citing Egbert and Charles Tragus as the principles of the firm which had commenced there in 1887.⁵ It is probable that some connection exists between the two families, given that electoral rolls list only 'Treagus' resident in Charles and Gordon Streets, Footscray, in 1908: occupations listed for both including 'quarryman'. Quarries existed in the immediate locality during the 1870s (Borough quarry in Geelong Road, another in Albert Road now Essex Street)⁶ and by the early 1900s, large

quarries adjoined the Ballarat Road at Nicholson Street,⁷ many more existing in Yarraville.⁸

Description

Double-fronted, hip-roofed and built of finely jointed quarry-face stone, this villa is an appropriate illustration of its first owners craft. Brickwork (fancy whites), built around openings and as three-course dog-tooth-ing below the facade eaves, is the minority material. Added, in the form of ornament, is the convex-profile cast-iron verandah, with its stylized Corinthian order columns and palmette cast-iron frieze. The chimneys, with their near cornice-less profile, bely the expected chimney pattern of the house construction date and hark back to an earlier era. The door joinery is modest, with sidelights and 'cricket bat' mouldings to door panels.



4 - 61 163 Gordon Street

- 1 RB1887,892
- 2 ER1908
- 3 D1890-1920
- 4 D1930-55
- 5 Sutherland, p.658
- 6 M1877
- 7 MMBW RP3, CPO-M387(3)
- 8 MMBW RP5

External Integrity

Brick piers and balustrading occupy the lower half of the verandah, part of which has been built in. The brickwork has been painted, fence replaced and an intrusive garage added on the north.

Streetscape

Adjoins a row of similarly formed timber villas on the south and relates, at some distance, to a row to the north. Most have been altered and immediately to the north is an unrelated recently renovated motel building.

Significance

Architecturally, a typical suburban villa, but distinguished here by its use of basalt and its mason owner, in an area known in the metropolis for its stone quarries.

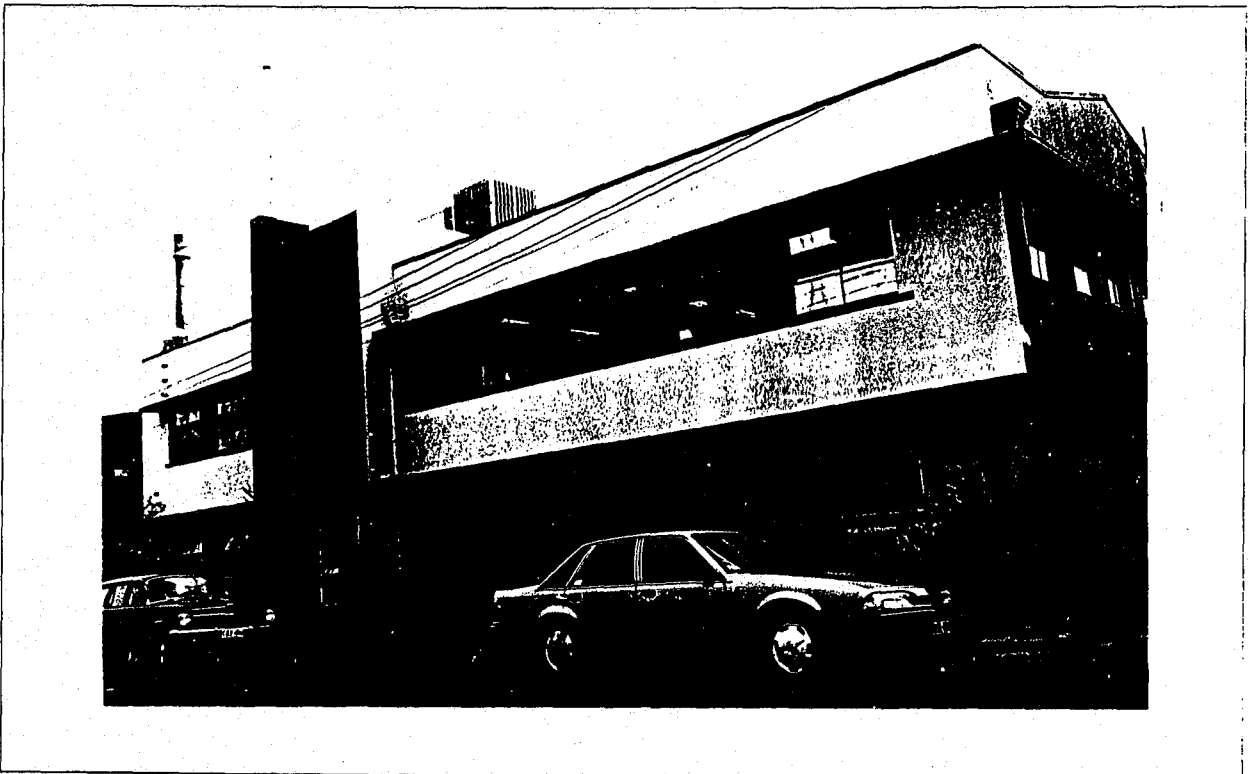
**Australian Bobbins Pty. Ltd.
Graingers Road**

History

This large complex may have been developed under the ownership of Australian Bobbins Pty. Ltd. and its Moderne-styled front built after tenders were called in 1933¹. Improvements were also made to the complex in 1941².

Description

The offices and showroom of this extensive complex again provide the identifiable period expression for a complex of many structures from diverse periods. As with Ajax Belting and Metters, the offices take up the latest available Moderne styling of the late 1930s, with deep concrete window hoods, a 'vertical feature' marking the entrance, a smooth and ruled rendered wall surface and steel-framed windows set in horizontal bands either side of the entrance tower, with its style flagpole. Beyond are brick and corrugated asbestos sawtooth blocks and an extensive inner courtyard lined with corrugated iron sheds. At the northern extremities of the complex, the present occupiers, Spartan-Wattyl, merge with the James Flood works.



4 - 62 Graingers Road

- 1 MUA1
- 2 FVC