

and elsewhere, following the tradition of long-term tenure for architects by the Board.

The brigade members resident there included Sam Parsons, Morris Logan, Walter Swingler, Joseph Jennings, Reg Wilcox, Thomas R. Naughton, Cornis McGennis, Ernest Ascott, and Thomas Allan.<sup>1</sup> McGennis, Swingler and Parsons were among the long-tenure residents.<sup>2</sup>

Prior to 1941, the station was located at 7-9 Droop Street, under officer Edgar Shaw<sup>3</sup> and before that, S. T. Mauger<sup>4</sup> and J.W. Holliday.<sup>5</sup> It is not surprising therefore that an early photograph shows the brigade 'practising' on the nearby Royal Hotel (q.v.).<sup>6</sup>

**Description**

The station takes on the contemporary red brick and cement Georgian revival style, more commonly used for residences in the eastern suburbs. It contrasts with other stations of the era, designed in the Moderne/Modern style of the architects Seabrooke and Fildes in suburbs such as Brunswick and Windsor.<sup>7</sup> Symmetry and stylised revival detail are essential aspects of this elevation.

**External Integrity**

Generally original, with additions to the south.

**Streetscape**

Isolated as a major utility building.

**Significance**

One of the city's more architecturally accomplished public utility buildings which has remained essentially unaltered from the street view.

**Whinbrae House  
37 Fairlie Street**

**History**

Percy William White, a brassmoulder, had previously resided with William (quarryman), John (retired), John Jnr. (labourer) and Elizabeth White at 179 Hyde Street, Yarraville,<sup>8</sup> before this house was built in Elizabeth's name, during 1924. The family appears to have then moved to 30 Smith Street, Yarraville.<sup>9</sup> Percy was the listed occupant there for at least a further 20 years.<sup>10</sup>

**Description**

A Bungalow-styled house, it possesses the broad overlapping gabled roofs, extended eaves-brackets and extensive gable shingling seen typically with this style type. Apart from the modest Eastern-styled verandah, the front focus lies with the projecting room bay and its impressive semi-circular leadlight window bay; also, the entrance porch possesses a broad archway and oculus window. Part of the original boundary picket fence survives on the south side of the block.

**External Integrity**

Front fence replaced (1930-40s ?).

**Streetscape**

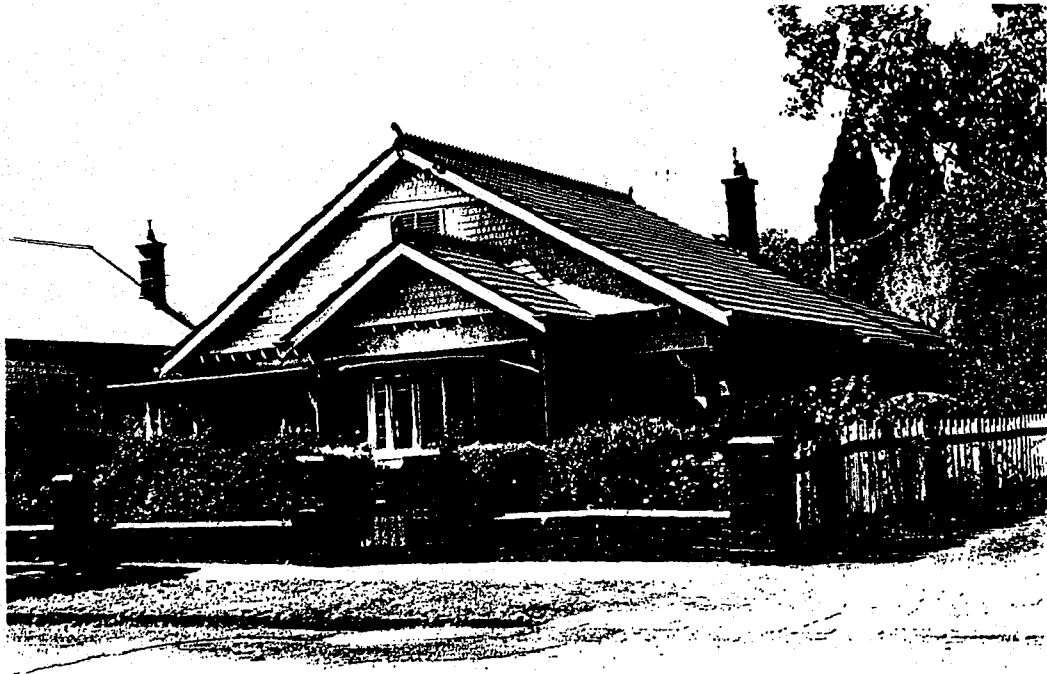
Commences a series of broad-gabled roof houses which extends north also adjoins the notable 34 Someville Road.

**Significance**

Architecturally, a successfully designed, well preserved and extensive Bungalow-style house. Historically, little is known of the White family in the context of Footscray's history.

---

1 D1945  
 2 D1950-55  
 3 D1935  
 4 D1915-20, Mauger was probably a relation of the parliamentarian for Maribyrnong  
 5 1900  
 6 FFOY p.103  
 7 Text of Footnote  
 8 MMBW CF138553; D1920-45; ER1908  
 9 ibid.  
 10 D1945



4 - 38 37 Fairlie Street

### **Yarraville Primary School 51-59 Francis Street**

#### **History**

Government aid to Yarraville's education was first sought for a new common school at Stony Creek, in 1868, but unsuccessfully. One year after a private school had been started there under a Mrs. Marguerite Mullens and another school had commenced at the United Methodist Hall. In 1871 similar approaches were made to the government, this time with some success. Stony Creek Common School 1122 was estab-

lished in the hall under J. Derrick, closing three years later in favour of a larger school.<sup>1</sup>

This 'larger' school was the modest beginning to the present building, opening in 1875 as a gabled Venetian Gothic revival brick structure which accommodated 218 students after only 8 months of operation, after an initial 60.<sup>2</sup> Thirteen years later, and after much distress from overcrowding, its internal destruction by fire meant the design of a much longer (8675 square feet) similarly styled edifice which added a storey and extra wings to the south and west<sup>3</sup>. Meanwhile, the Yarraville Jubilee Hall was leased as a temporary measure.<sup>4</sup>

A contract was let by June 1889 and completion reached five months later, although not completely to

- 1 V&R V3,p.56
- 2 *The Independent* 13/3/86
- 3 PWD contract drawings 25.4.87
- 4 *ibid.*: VPRS795/888 (14/6/89)