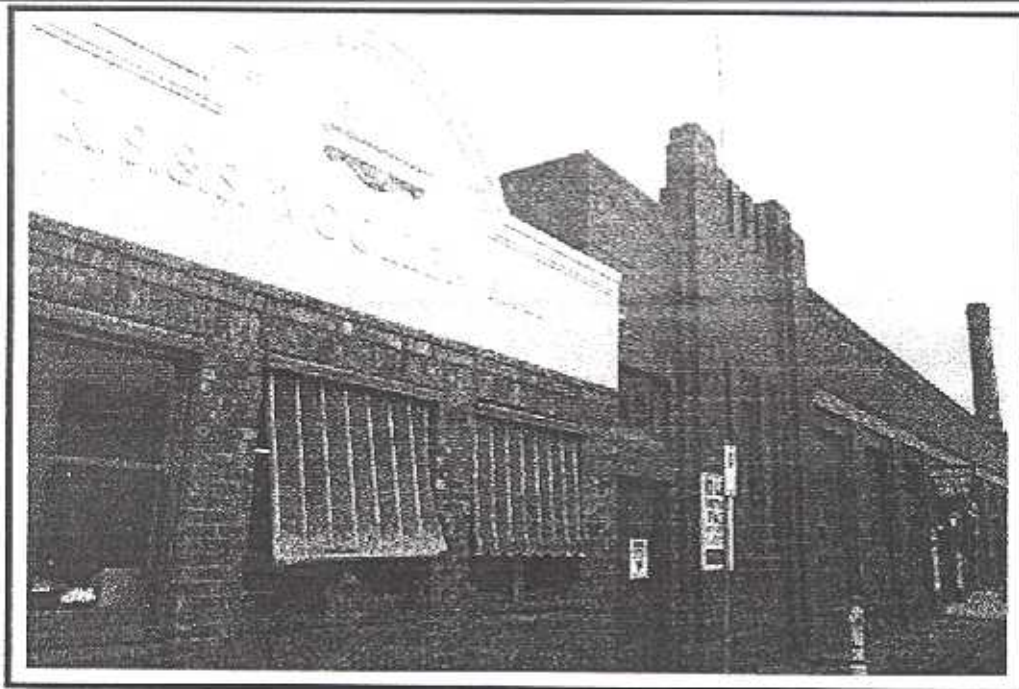
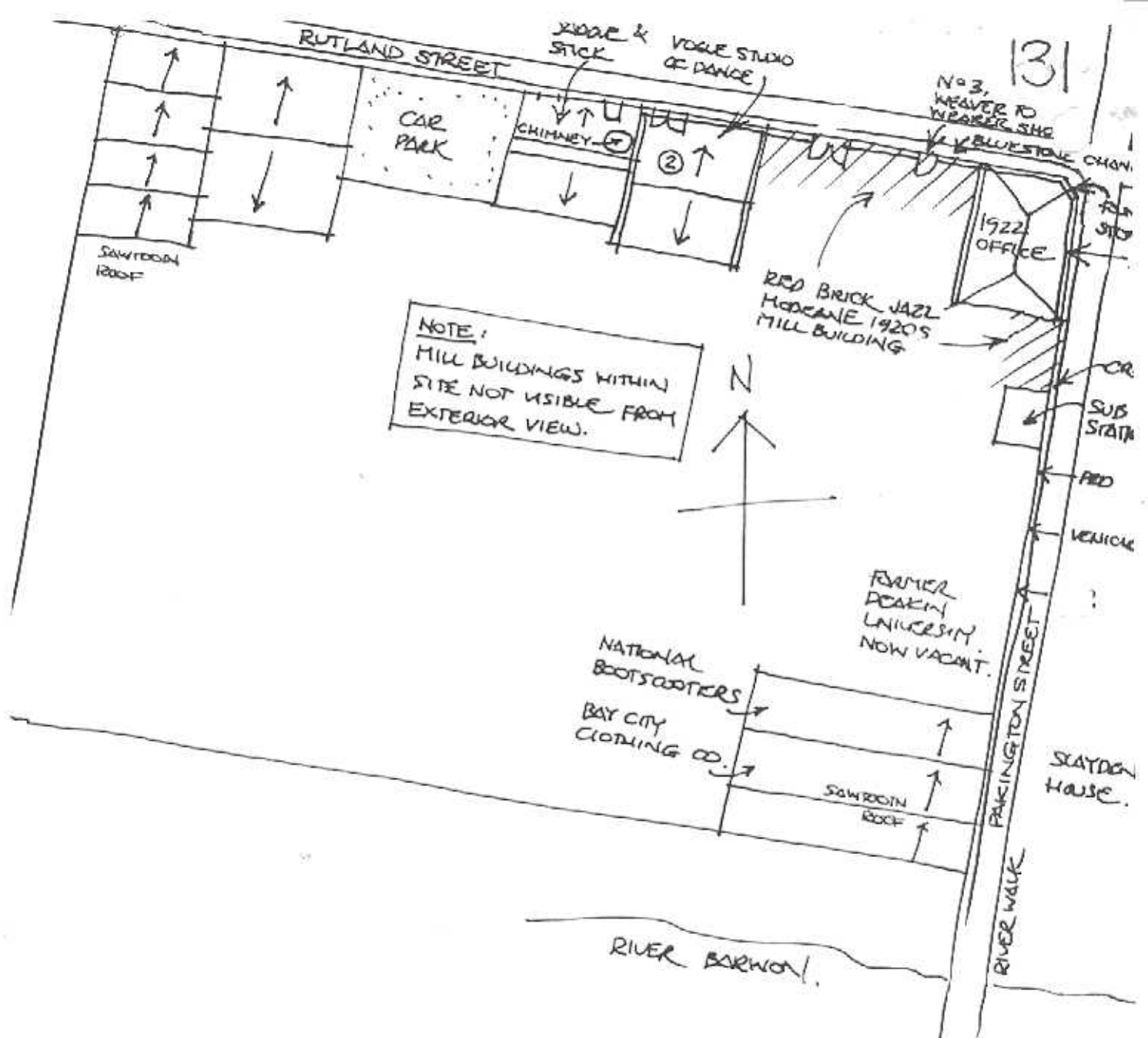


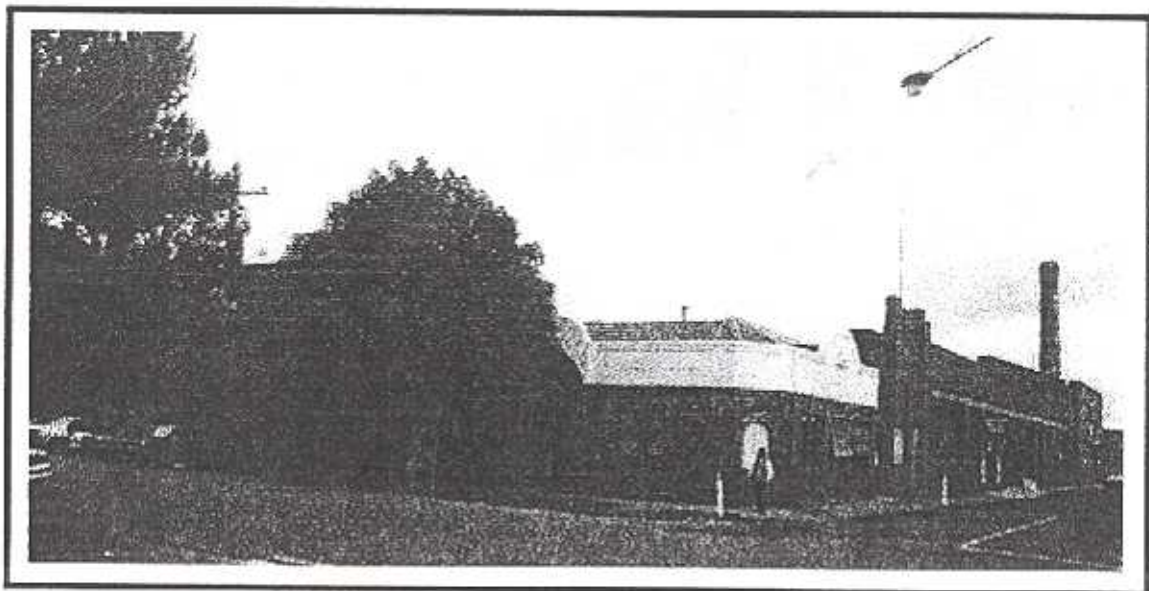
NEWTOWN URBAN CONSERVATION STUDY. - 'C' CITATIONS. **Ref: 131**
 Richard Peterson Architect & Conservation Consultant. Daniel Catrice Historian 1996.

NAME: Geelong R.S. & S. Woollen Mill (Retsol)	
PREVIOUS NAME: Geelong R.S. & S. Woollen & Worsted Co-Operative Manufacturing Coy. Ltd. & Deakin University.	
ADDRESS: Pakington Street (south-west cnr Rutland Street)	
USE: Woollen Mill	
PREVIOUS USE: Woollen Mill	
CONSTRUCTION DATE: 15.2.1922 SOURCE: Foundation stone.	
ALTERATIONS/ ADDITIONS: DATE: ??	
DESIGNER: F.C. Purnell & Laird & Buchan. BUILDER: —	
SOURCE: Foundation stone	
CRITERIA: I11, I12, I13, I14; Ar1, Ar2, Ar3. HISTORIC THEME: 4.3	
DESCRIPTION: STYLE: Romanesque/ Moderne STORIES: 1 & 2	
MATERIALS: WALLS Brick ROOF Iron STRUCTURE I.b & frame	
CONDITION: Very good. INTACTNESS: Very good. THREATS: Use?	
SIGNIFICANT INTACT ELEMENTS: USE. PARAPET DECORATION. CHIMNEY. WALL DECORATION. DOORS. WINDOWS. PAINTWORK SCHEME. SIGNS. UNPAINTED FINISH. STREET FURNITURE. Kerbs. MEMORIAL. PLANT/EQUIPMENT.	
SIGNIFICANCE:	
TYPE: HISTORICAL. ARCHITECTURAL. SOCIAL.	
LEVEL: LOCAL.	
DESIGNATION EXISTING: PLANNING SCHEME.	
RECOMMENDED CONTROL: PLANNING SCHEME.	
GRID REF:	SURVEY: RP DATE: 23.5.96. NEGS: 6.12,13,14 & 15





RP. 5.96. NTS.



HISTORY: In 1917, the *Geelong Advertiser* presented an appeal to process cloth woven by returning ANZACs. Sergeant A.W. Sinclair trained and supervised the men. He had been trained as a tailor in Glasgow. This began in the Brigade rooms. Every existing woollen mill in Geelong: The Albion, Unwin, Federal and Excelsior mills donated machinery, parts and wool yarn.¹

The foundation stone of the Soldiers' Mill was laid by the Prime Minister, W.M. Hughes, on February 15, 1922. Subscribed from the war gratuity bonds of about 1,500 returned soldiers, sailors and nurses throughout Australia and helped by government loans, the mill specialised in woollen and worsted suitings. In 1925, the mill was renamed the Returned Soldiers' Mill. By 1930 it employed approximately 300 hands.²

VISUAL DESCRIPTION: A large, red brick, single and double-storied industrial complex, still operating as a woollen mill, but with reduced capacity and part occupied by other tenants and part apparently vacant.

Office, (cnr Pakington & Rutland Streets, 1922): Single storey clinker brick parapeted building, with a splayed corner, a three bay symmetrical front facing Pakington Street and three bays to Rutland. Its central entrance is Romanesque, arched with archivolt, with double three panel doors with a very fine leadlight semi-circular fanlight. It is inscribed 'RETSOL' under a rising sun motif, in golden and clear glass. The parapet has rendered recessed panels, with raised lettering: 'GEELONG R.S. & S. Est. 1920. WOOLLEN MILL' and to Rutland Street, here with the Retzol symbol embossed, in foliate embellishment. It is arched over the entry, with ogee shoulders, double-hung window pairs, each side and decorative brackets. A soldier course band over heavy concrete soffit panels, with headers. There are good coved rainwater heads at angles.

Mill, (fronts both Pakington & Rutland Streets, 1920s): Two Jazz Moderne red brick fronts, with steel windows. There are 15 bays to Rutland Street and — bays to Pakington. Penultimate bays at each end are rising panels with crystalline and slotted parapet and flag poles. Below is a herringbone panel with dentillated window-head decoration over tripartite windows. The third bay is plain. Behind is a round chimney with 'R.S. & S' vertically picked out in white bricks.

Note: The interior was not inspected and the remaining exterior was not inspected beyond assessment that it appears not to have architectural value, although it may well have historical and social value.

COMPARATIVE ANALYSIS: Collins Bros. Woollen Mill. Ref: 83.

¹ *Geelong Advertiser*, January 11, 1973. Article held by Weaver to Wearer shop, 3 Rutland Street.

² *City of Newtown and Chilwell Ratebooks*.

G. Seaton, *Model Borough: An Introduction to Old Newton and Chilwell*, City of Newtown, 1983.

SIGNIFICANCE: A large Woollen Mill complex established in 1922 in order to provide employment to returned servicemen from the Great War as a community enterprise and still in operation, if at a reduced scale. It is architecturally significant as a characteristic office and factory of the 1920s, the former Romanesque and latter Jazz Moderne in style, with the leadlight brand symbol window of particular interest. It is historically significant as a surviving industrial enterprise from the 1920s still in operation, but particularly as evidence of community social enterprise in support of men returning from participation in an international government initiative.

INTACTNESS: Very good. Generally with minor functional alterations as required over time. The 1922 corner building have excellent intactness.

CONDITION & THREATS: Very good generally, but there is a major structural crack at the south-east corner of the Pakington Street mill building.

