

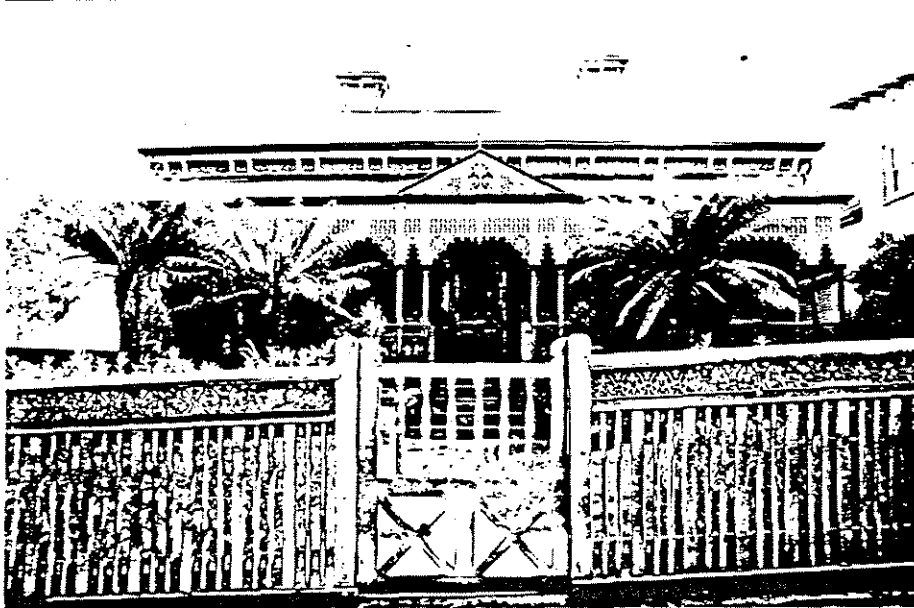
## 57 COTHAM ROAD, HOUSE

---

Original Use: Residence  
Date of Construction: 1892<sup>1</sup>  
Architect: Unknown

DESIGNATION B  
CITATION NO.31

---



### HISTORY AND DESCRIPTION

The first documentary evidence of this building comes from Rate Book research, which indicates that William Henry Woollard, a builder, was the initial owner and occupier of the property in 1892<sup>2</sup>. As a builder, it is probable that Woollard constructed his house. Attracting an initial N.A.V. of £70<sup>3</sup>, by 1910 John Gidley, commercial agent, was occupying the premises<sup>4</sup>. By that date the property was recorded as having an N.A.V. of only £41<sup>5</sup>.

The house is one of very few of its type in Kew and is an outstandingly intact example of a relatively small house of the late Victorian period. It is single storeyed and rendered. The walls are embellished with incised medallions between the openings and the eaves line decorated with closely set render mouldings, and timber brackets. The verandah is heavily decorated with cast iron and has a pediment to its centre and it takes advantage of the small rise in the land to be set up on a plinth and to have a balustrading of cast iron panels. The roof has a banding of hexagonal slates and its bracketed moulded render chimneys are also intact. The front fence is particularly fine and appears to be original with timber pickets of alternating sizes, a cast iron frieze and gate with turned timber insert.

## SIGNIFICANCE

57 Cotham Road is of significance as an (externally) almost completely intact small house of the late Victorian period and for its rarity within Kew. An inspection of the interior of this house would establish whether the interior enhances the significance of the interior.

## HERITAGE LISTINGS

HBR: Recommended for inclusion on the register.

GBR: N/A

RNE: Recommended for inclusion on the register.

National Trust: Not currently listed.

---

<sup>1</sup> City of Kew, Rate Books, 1892

<sup>2</sup> *ibid.*

<sup>3</sup> *ibid.*

<sup>4</sup> *ibid.*, 1910

<sup>5</sup> *ibid.*

This small house is both unusual and relatively intact (externally, including the grounds and fence). It warrants investigation to discover the integrity of the interior.