

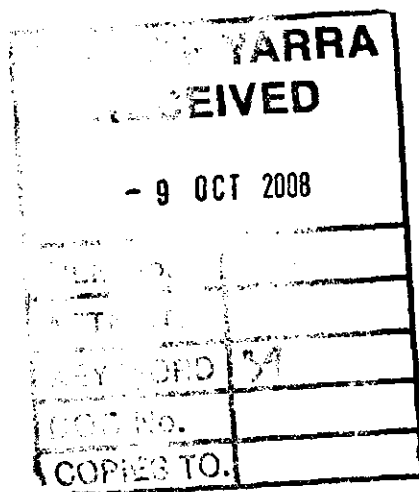


## Department of Planning and Community Development

File No. 606817

7 Oct 2008

The Statutory Planner  
Yarra City Council  
P.O. Box 168  
RICHMOND  
VIC 3121



Level 7  
8 Nicholson street  
East Melbourne Victoria 3002  
Telephone: 9637-9475  
Facsimile: 9637-9503  
[www.heritage.vic.gov.au](http://www.heritage.vic.gov.au)

Dear Sir/Madam,

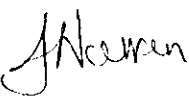
### **HUNGARIAN REFORMED CHURCH 121 ST GEORGES ROAD FITZROY NORTH VICTORIAN HERITAGE REGISTER**

At its meeting of 2 Oct 2008 the Heritage Council determined that the above place was not of sufficient cultural heritage significance to warrant inclusion in the Victorian Heritage Register.

As formally required by section 42 of the Heritage Act (1995), the Heritage Council further resolved to refer the recommendation that the place be included in the heritage overlay to the local planning scheme. However we note the places is already subject to the provisions of your planning scheme (H0327)

If you require any further information please contact Jan Warren, Registration Co-ordinator on 03 9637 9295 or email [jan.warren@dpcd.vic.gov.au](mailto:jan.warren@dpcd.vic.gov.au).

Yours sincerely

*for* 

**Ray Tonkin**  
**Executive Director**  
**Heritage Victoria**

CC: National Trust

## **RECOMMENDATION AND DETERMINATION ON A NOMINATION TO THE VICTORIAN HERITAGE REGISTER**

**NAME:** HUNGARIAN REFORMED CHURCH

**VHR NO:** Not applicable

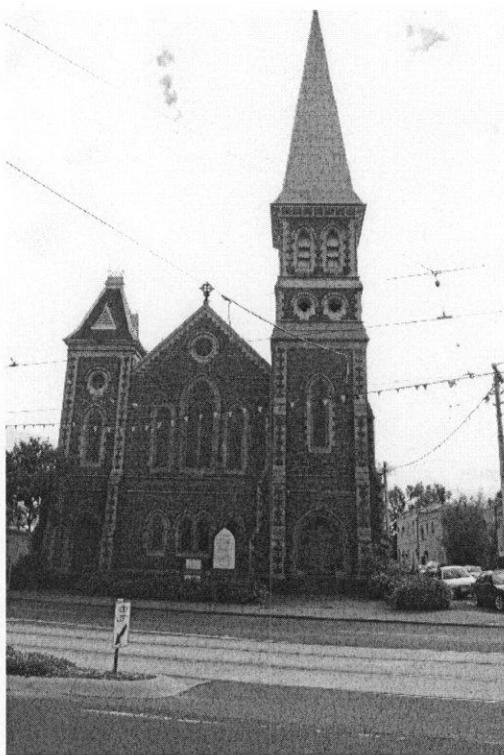
**LOCATION:** 121 ST GEORGES ROAD FITZROY NORTH, Yarra City

**CATEGORY:** Not applicable

**FILE NO:** 606817

**OFFICER/S REPORTING:** Paul Roser

---



---

### **RECOMMENDATION BY EXECUTIVE DIRECTOR**

- That the Place or object NOT be included in the Heritage Register [Section 32(1)(b)]
- That the Place or object be referred to the relevant planning authority for inclusion in a planning scheme [Section 32(2)]

## Victorian Heritage Register



---

Manager  
Heritage Assessments

---

Date

---

Executive Director

---

Date

---

**HERMES ID:** 4562

**HERITAGE REGISTER NUMBER:**

**NAME:** HUNGARIAN REFORMED CHURCH

07-Oct-2008

12:12:07PM

## REASON:

Crouch and Wilson designed more than two dozen churches for several denominations, although principally for the Wesleyan Methodists, of which Thomas Crouch was an active member. There are three churches designed by the distinguished architectural firm of Crouch and Wilson on the Victorian Heritage Register as well as a synagogue, a hospital, several mansions, houses and homesteads and the Victorian Institute for the Deaf and Dumb.

The churches include:

1. The Independent Church, Malvern Road, Prahran (VHR1022, 1858-9), The Former Independent Church is of architectural significance as one of the earliest designs of Crouch and Wilson whose partnership was formed in 1858. Crouch and Wilson's ecclesiastical and institutional designs were extremely influential in 1860s and 1870s Victoria, and this church is particularly interesting as a progenitor of their later work.
2. the Wesleyan Methodist Church, St Kilda (VHR0818, 1857-8) The bluestone 1857-58 former Wesleyan Church has architectural significance as one of the first Wesleyan churches in Victoria designed in the Gothic style with a square central entrance tower with early English stepped buttresses and pinnacles above.
3. the Uniting Church, Golden Square, (VHR 1371, 1870-73). The Golden Square church is a large Gothic style building in bichromatic brick with a slate roof. It is dominated by a corner tower with bellcast eaves surmounted by a tapering spire and a five-light Decorated Gothic west window.
4. the Chinese Mission Church in Little Bourke Street, Melbourne has been recommended for the Register (PROV H2175, 1872)

Of direct comparison to the Hungarian Reformed Church, churches by Crouch and Wilson in the same idiom are:

1. The former Wesleyan Methodist now Greek Orthodox, Yann St Preston, Crouch & Wilson, 1889 (included in Heritage Overlay of City of Darebin)
2. The former Wesley Church, Warragul, Crouch and Wilson, 1888 (included in the Heritage Overlay of Shire of Baw Baw). Of brick, rendered and painted over in the 1930s, with cement dressings. A slight variation to the design is the open timber belfry below the spire.
3. Erskine Presbyterian Church, corner of Grattan and Rathdowne Streets, Carlton, Crouch and Wilson, 1874 - now demolished. Slightly earlier but otherwise very similar to St Lukes, with transverse gables and three stage tower, although without the spire and secondary tower with mansard roof.

Crouch and Wilson employed the same bellcast spire motif at the former Wesleyan Church, now Uniting Church, corner of Carlisle and Chapel Streets, St Kilda. (City of Port Phillip, HO07). That church is polychromatic brick, with hawthorn face bricks and red and cream facings and a slate roof.

The former Free Church of England, Latrobe Terrace, Geelong was designed by architects Backhouse and Reynolds and constructed in 1858. It is included on the Victorian Heritage Register as H1123. The church is architecturally significant as an extraordinary example of the Early English Gothic style of architecture. Although the building displays characteristic features such as lancet windows and a spire in simple broach form, it also includes highly distinctive elements such as the seven transverse gables and the extremely squat tower.

The Hungarian Reformed Church does not have sufficient cultural significance for inclusion in the Victorian Heritage Register. The building has local historical and architectural significance. It is already included in the Heritage Overlay to the City of Yarra's planning scheme in precinct HO327. It should have an individual overlay with internal controls.

## STATEMENT OF CULTURAL HERITAGE SIGNIFICANCE:

The Hungarian Reformed Church was built as St Luke's Church of England in 1879 to the design of architects Crouch and Wilson. The site was purchased in 1878 and the foundation stone was laid in February 1879. It was constructed to only two-thirds its intended length. A brick chancel and vestry were added to the rear in 1910. The church was purchased by Hungarian Reformed Church in 1970.

The church is in the Early English style, predominantly with simple lancet windows. The distinctive asymmetrical

## Victorian Heritage Register



composition of large, three stage tower with landmark 'witches hat' metal clad bellcast spire counterpoised by a diminutive tower with mansard roof was employed by Crouch and Wilson on several other churches. The church is constructed in bluestone with cream brick dressings, and the bays of the nave are expressed externally as a distinctive series of subsidiary, transverse gables. Internally the church is a rectangle in plan, with a polygonal apse and no transepts. It has a raked floor and complex vaulted timber ceiling carried by tall and slender cast iron columns with quatrefoil section. The church contains an pipe organ built by William Anderson and installed about 1890.

The Hungarian Reformed Church is of local architectural significance as an example of architects Crouch and Wilson's series of churches built in the late 1870s and 1880s in an idiosyncratic asymmetrical style with bellcast spires. The church is of local architectural significance as a prominent local landmark.

The Hungarian Reformed Church is of local historical significance in the development of North Fitzroy from the 1870s.

---