

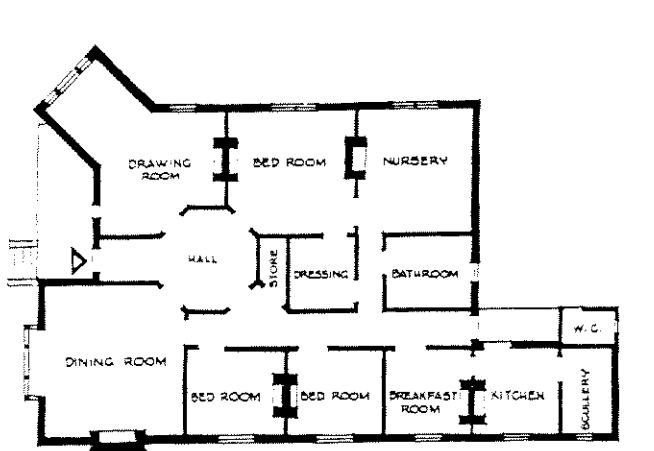
Original Use: Residence  
Date of Construction: 1885<sup>1</sup>  
Architect: Lloyd Tayler<sup>2</sup>

DESIGNATION A  
CITATION NO.13



#### HISTORY AND DESCRIPTION

'Mynda' was erected for architect Lloyd Tayler's daughter and son-in-law, Mr and Mrs Anderson<sup>3</sup>. Tayler commenced in practice as an architect in 1854 and was most prolific in Melbourne during its boom years<sup>4</sup>. He was noted for a number of banks and other large commercial buildings as well as residential properties in and around Brighton<sup>5</sup>. The description given of the building in the Australian Heritage Commission citation is repeated here: 'Outstanding for its undisturbed balance between the house, both interior and exterior and the garden. The interior, though architecturally distinctive, is modest and frugally decorated, the emphasis being on monochromatic stencilled decoration on painted walls and ceilings, with dados of embossed 'Leatherette' paper. The more elaborate drawing room uses a combination of conventional mid-Victorian wallpapers. The octagonal vestibule is particularly noteworthy both decoratively and architecturally'. The diagonal emphasis introduced by the vestibule was repeated in the diagonal placement of the corner window to the Drawing Room; an idea later repeated and modified in many Edwardian houses.



(*The Australian House* p.83)

### SIGNIFICANCE

The Statement of Significance prepared by the National Trust of Australia (Victoria) and adopted by the Australian Heritage Commission is repeated here: 'A suburban villa of 1885 designed by Lloyd Tayler for his daughter and son-in-law on a plan centred upon an octagonal top-lit hall. A square bay window to the drawing room projects from the front corner of the house at 45 degrees, showing for the first time the diagonal emphasis which was to be developed in other works of the architect and to become in due course a characteristic of the Federation Style. The house is also remarkable for the extent of its surviving interior finishes, including the fine embossed leather dados of the hall and bedroom, the dado, filler and frieze papers of the drawing room and a number of other decorative details.'

### HERITAGE LISTINGS

HBR: Recommended for inclusion on the register.

GBR: N/A

RNE: Nominated

National Trust: Classified No.4591

<sup>1</sup> HBC, 'Mynda: 5 Molesworth Street...', 5 October 1982, held in File No.82/1606

<sup>2</sup> *ibid.*

<sup>3</sup> Forge, S., *Victorian Splendour*, pp.83-85

<sup>4</sup> HBC, 'Mynda': File No.82/1606

<sup>5</sup> *ibid.*